

THREAD AND DIMENSION DATA

CODE	THREAD SIZE	ØD
4	.250-20 UNC-2A	2.38
5	.312-18 UNC-2A	2.38
6	.375-16 UNC-2A	2.38
8	.500-13 UNC-2A	2.50

LENGTH L DATA (LENGTH CODE IN 1/16 INCH INCREMENTS)

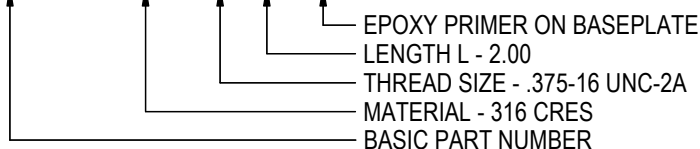
CODE	16	24	32	40	48	56	64
L	1.00	1.50	2.00	2.50	3.00	3.50	4.00

MATERIAL AND FINISH DATA

CODE	MATERIAL	PASSIVATE
CRM	316 CRES	AMS 2700

EXAMPLE PART NUMBER

CB9715 CRM 6-32 P



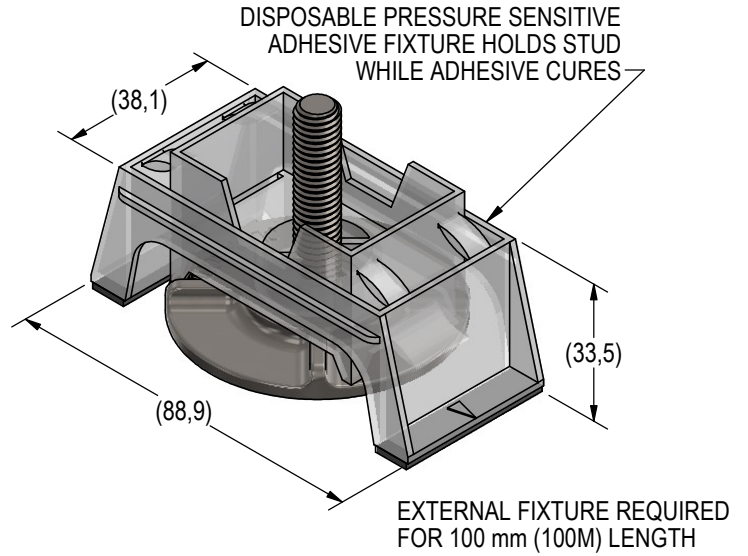
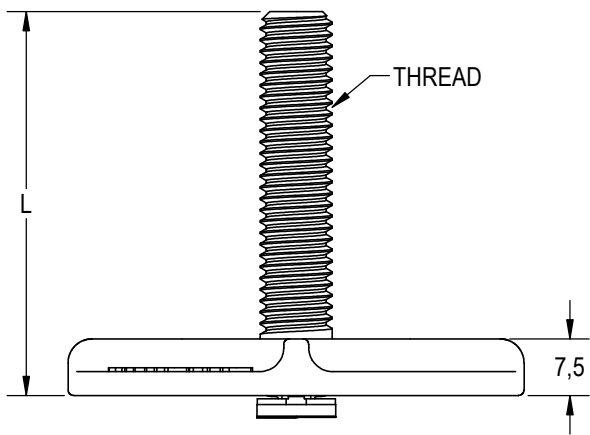
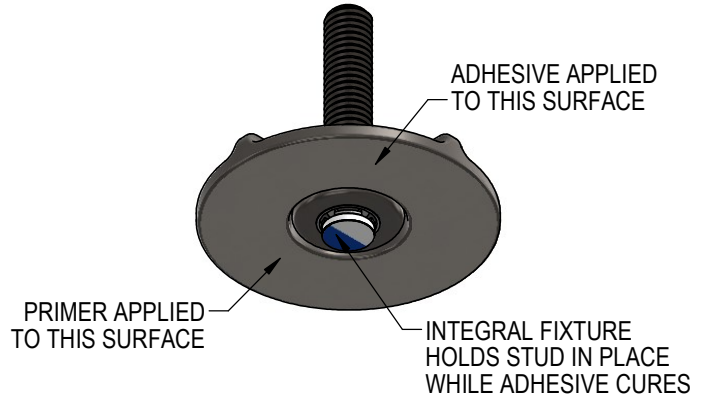
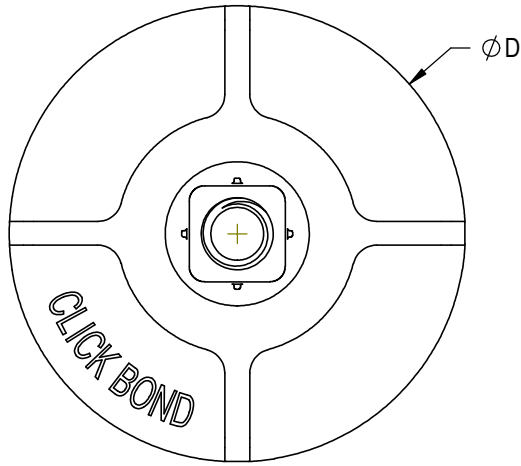
UNLESS OTHERWISE SPECIFIED, ALL DIMENSIONS ARE IN INCHES AND TOLERANCES ARE AS SHOWN BELOW. DIMENSIONAL TOLERANCES AND SYMBOLS PER ANSI Y14.5M-1982.

THE PARTS SHOWN IN THIS DRAWING ARE PROPRIETARY AND MAY BE THE SUBJECT OF ISSUED UNITED STATES AND FOREIGN PATENTS AND PATENTS PENDING. UNAUTHORIZED REPRODUCTION AND/OR DISTRIBUTION OF THIS DRAWING IS SPECIFICALLY PROHIBITED.



2151 LOCKHEED WAY
CARSON CITY, NEVADA 89706

CAD CB9715-1		APPROVALS		DATE		TITLE	
ANGLES ±1°		DRAWN GTP		7MAY18		STUD, ADHESIVE BONDED, SELF FIXTURING	
.XX ±.03		CHECKED <i>DAC/ntm</i>		24JUN19		SIZE CAGE CODE	
.XXX ±.010		RELEASED RPP		24JUN19		DWG. NO. CB9715	
.XXXX ±.001		REVISED GTP		24JUN19		REV. 8	
		SCALE: 1:1		24JUN19		6MAY19	
						SHEET 1 OF 2	



THREAD AND DIMENSION DATA

CODE	THREAD SIZE	ϕD
6M	M6 X 1,0 6g	60,3
8M	M8 X 1,25 6g	60,3
10M	M10 X 1,5 6g	60,3

LENGTH L DATA (LENGTH CODE IN MILLIMETERS)

CODE	25M	35M	50M	100M
L	25,0	35,0	50,0	100,0

MATERIAL AND FINISH DATA

CODE	MATERIAL	PASSIVATE
CRM	316 CRES	AMS 2700

EXAMPLE PART NUMBER

CB9715 CRM 10M 50M P

↑ BASIC PART NUMBER
 ↑ MATERIAL - 316 CRES
 ↑ THREAD SIZE - M10 X 1,5 6g
 ↑ LENGTH L - 50 mm
 ↑ EPOXY PRIMER ON BASEPLATE

UNLESS OTHERWISE SPECIFIED, ALL DIMENSIONS ARE IN MILLIMETERS AND TOLERANCES ARE AS SHOWN BELOW. DIMENSIONAL TOLERANCES AND SYMBOLS PER ANSI Y14.5M-1982.

CAD CB9715-2
METRIC DIMENSIONS

THE PARTS SHOWN IN THIS DRAWING ARE PROPRIETARY AND MAY BE THE SUBJECT OF ISSUED UNITED STATES AND FOREIGN PATENTS AND PATENTS PENDING. UNAUTHORIZED REPRODUCTION AND/OR DISTRIBUTION OF THIS DRAWING IS SPECIFICALLY PROHIBITED.

APPROVALS		DATE
DRAWN	GTP	7MAY18
CHECKED	<i>DAC</i>	24JUN19
RELEASED	RPP	24JUN19
REVISED	GTP	24JUN19

CLICK BOND

2151 LOCKHEED WAY
CARSON CITY, NEVADA 89706

TITLE
STUD, ADHESIVE BONDED, SELF FIXTURING

ANGLES	$\pm 1^\circ$
.X	$\pm 0,8$
.XX	$\pm 0,25$

SIZE	A
CAGE CODE	66530

DWG. NO.	REV.
CB9715 (METRIC)	8
SCALE: 1:1	SHEET 2 OF 2