

ORIGINAL  
Red Ink Indicates  
Original Copy

HUCK LAKEWOOD  
CONTROLLED DISTRIBUTION

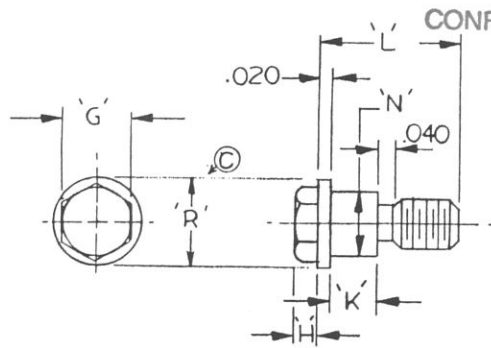
S-917

AREA NO. \_\_\_\_\_

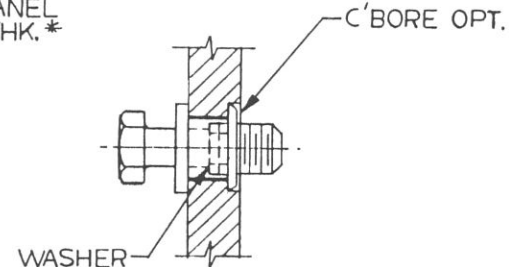
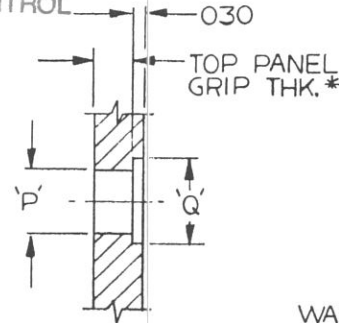
	1	2	3	4	5	6
A	.	.	.	.	.	.
B	.	.	.	.	.	.
C	.	.	.	.	.	.
D	.	.	.	.	.	.
E	.	.	.	.	.	.
F	.	.	.	.	.	.

CHECKED SQUARES  
INDICATE AVAILABLE  
ASSYS.

THE FOLLOWING PATENTS  
APPLY: 3,561,933  
3,571,904 3,665,581



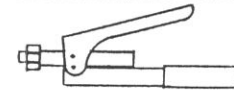
ASSY. BEFORE MOUNTING



ASSY. AFTER MOUNTING

SIZE	'H'	'G'	'N'	'Q'	'P'	'R'
8	.110 .096	.250 .244	.215 ±.005	.348	.228 +.004 -.001	.314
10	.120 .105	.312 .305	.250	.375	.257	.365
12	.172 .190	.428 .437	.313	.437	.323	.492

INSTALLATION TOOL



H7503-X  
TOOL SIZE

TYP ASSY. CALLOUT

HEXJ 7900 8 B 2

'L'	
1	.285
2	.410
3	.535
4	.660
5	.785
6	.910

.335 FOR 1/4-28 THD.

TOP PANEL GRIP THK.\*

	'K'
A	.031-.062 .085
B	.063-.125 .147
C	.126-.187 .210
D	.188-.250 .272
E	.251-.312 .335
F	.313-.375 .397

THD. SIZE

8	8-32 UNC CL.2A
10	10-32 UNF CL.2A
12	1/4-28 UNF CL.2A

JACKING SCREW ASSY.

MATERIAL:

SCREW, 300 SERIES CRES STL. PER ASTM-A-493-62

SLEEVE, 6061 ALUM. PER QQ-A-225/8

WASHER, 300 SERIES CRES STL. PER MIL-S-7720

FINISH: SCREW, WASHER, PASSIVATE PER MIL-STD-471, FINISH 54.1.  
SLEEVE, ANODIZE PER MIL-A-8625

NOTE: 'K' IS DEPENDENT OF GRIP DASH NO. LETTERS 'A' TO 'F' APPLY TO TOP PANEL.

FED. M. NO. 08524

1. DE-BURR ALL SHARP EDGES

TOLERANCES		DEUTSCH FASTENER CORPORATION 7001 W. IMPERIAL HWY. • LOS ANGELES, CALIF. 90045	DRAWN J.W.	NO.	CHANGE	BY	DATE
FRACTIONS ±.015	DECIMALS ±.015						
UNLESS OTHERWISE SPECIFIED		JACKING SCREW ALUM. SLEEVE, HEX HEAD, HEXJ 7900	CHECKED A.VAN SMAALEN				
MATERIAL	NOTED		APPROVED				
MATERIAL	NOTED		DATE 4-14-70	SCALE			
FORGING	NOTED			S-917			