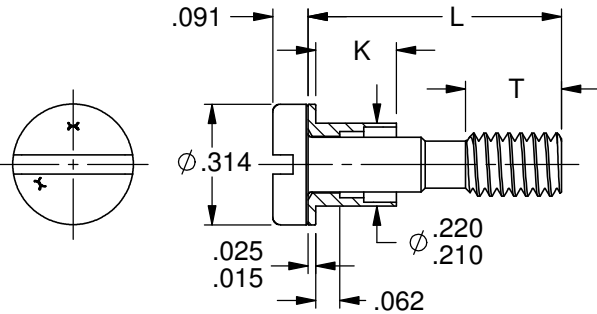
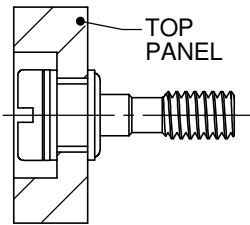
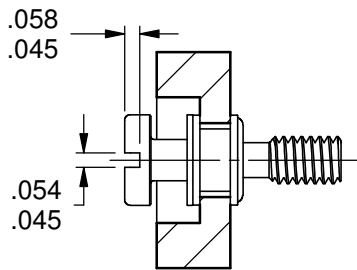
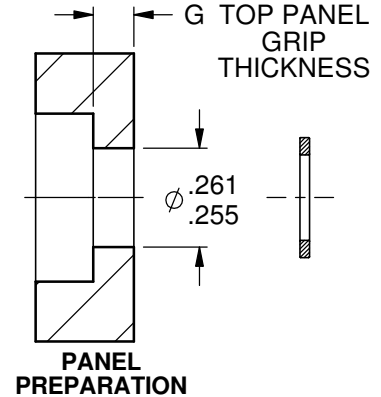
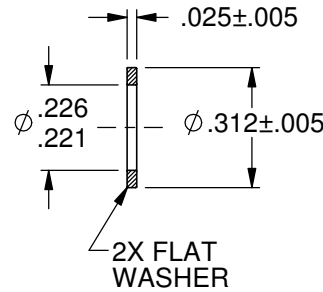


THIS DRAWING, THE STRUCTURAL DESIGN DISCLOSED THEREIN AND THE TECHNICAL DATA AND ENGINEERING SERVICE REPRESENTED THEREBY ARE THE EXCLUSIVE PROPERTY OF HUCK INTERNATIONAL, INC.



SCREW ASSEMBLY BEFORE MOUNTING



SCREW ASSEMBLY AFTER MOUNTING

SCREW ASSEMBLY AFTER MOUNTING

USE INSTALLATION TOOL: LFH7503-8

NOTES:

- 1 IN ORDER TO FLOAT THE FASTENER, AN ADJUSTMENT TO THE TOOL TRAVEL DISTANCE HAS TO BE MADE FOR EACH INDIVIDUAL REQUIREMENT.
- 2 "K" IS INDEPENDENT OF GRIP DASH NUMBER. GRIP LETTERS 'A THRU E' APPLY TO THE "G TOP PANEL GRIP THICKNESS".

MATERIAL:

STUD: A-286 CRES PER ASM 5737.
HEAT TREAT TO 160 KSI U.T.S.

SLEEVE: 6061 T6 ALUM PER AMS 4117
OR AMS QQ-A-225/8

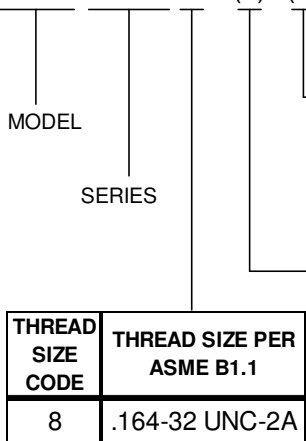
WASHERS: 300 SERIES CRES PER
ASTM A 240, ASTM A 582,
ASTM-A-666, OR EQUIVALENT

FINISH:
STUD & WASHERS:
PASSIVATE PER AMS2700.

SLEEVE: ANODIZE PER MIL-A-8625,
TYPE II, CLASS 1

PART NUMBER CALLOUT

FCRT 7900L -8 -() -()



LENGTH CODE	L
2	.410
3	.535
4	.660
5	.785
6	.910

GRIP CODE	G (TOP PANEL GRIP THICKNESS)		K
	A	B	
A	.031-.068	.147	.147
B	.069-.131	.210	.210
C	.132-.193	.272	.272
D	.194-.256	.335	.335
E	.257-.318	.397	.397

GRIP CODE	T = THREAD LENGTH AVAILABILITY TABLE				
	2	3	4	5	6
A	.200				
B	.140			.250	
C		.200			
D		.140			
E			.200		

ASSEMBLIES NOT AVAILABLE (Grey box)
ASSEMBLIES AVAILABLE WITH FULL THREAD LENGTH OTHERWISE, LENGTH AS SHOWN (White box)

E PER DCN 13115, CHANGED FORMAT, UPDATED FINISH SPECS

TOLERANCE UNLESS OTHERWISE NOTED:
.X = ±.05
.XX = ±.02
.XXX = ±.015
ANGLES ±0.5°

DRAWN BY: J. SCHLOBOHM
CHECKED BY: SIGNATURE ON FILE

ISSUED: 7/29/2005
REVISED: 6/19/2015
PAGE: 1 OF 1

**CAPTIVE SCREW, SIZE 8-32,
FLOATING, FIXED THREAD LENGTH**

DIMENSIONS IN INCHES

**FCRT7900L
S-2786**