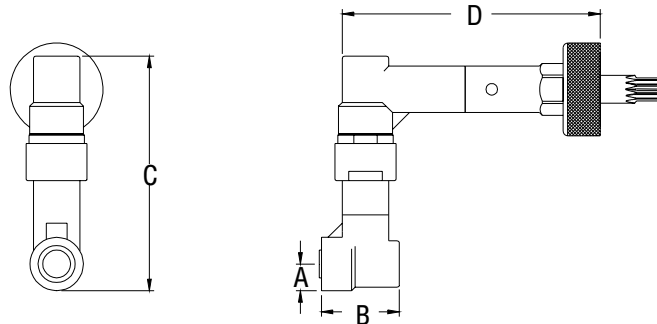


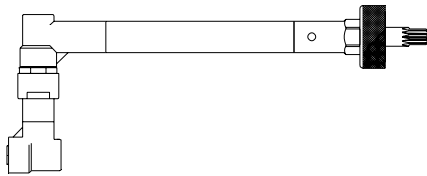
	A	B	C	D	360 DEGREE DRILL	
INCH	.362	1.049	3.162	3.550	MAXIMUM RECOMMENDED DRILL DIAMETER	.250
MM	9.19	26.64	80.31	90.17		6.35 mm



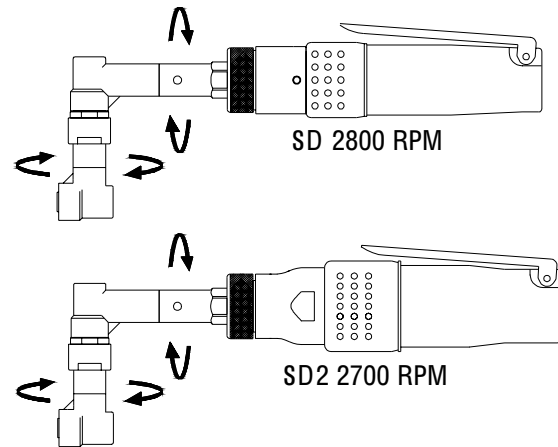
ALL BEARING 360 DEGREE DRILLS



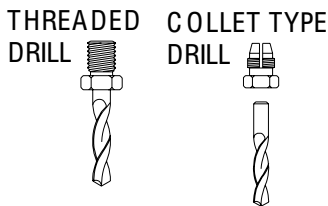
15000 ATTACHMENT ONLY PART OF THE JIFFY MODULAR DRILL SYSTEM



ATTACHMENT SHOWN WITH OPTIONAL
3.750" 95.25mm EXTENSION ASSEMBLY No. 15047



The high nickel alloy
used in our drill attachment gears
make this unit SUPERIOR
in drilling performance.



INTERNAL THREAD	
ADD TO TOOL No.	
1/4-28	A
10-32	C
9/32-40	E
COLLET	D

TOOL ORDER NUMBER	R.P.M.	LENGTH		WEIGHT	
		Inch	mm	Lbs.	Kg.
SD SERIES .30 HP MOTOR					
16251	250	9.9	251	1.8	.81
14999	500	9.9	251	1.8	.81
15001	750	9.9	251	1.8	.81
15002	1000	9.9	251	1.8	.81
15003	1500	9.9	251	1.8	.81
15004	2800	9.0	228	1.5	.68
SD2 SERIES .60 HP MOTOR					
16252	250	11.3	287	2.9	1.3
15005	450	10.4	264	2.5	1.1
15006	1000	10.4	264	2.5	1.1
15007	2000	9.4	238	2.2	1.0
15008	2700	9.4	238	2.2	1.0
15009	3500	9.4	238	2.2	1.0

PHONE: 775 883 1072 FAX: 775 883 4857