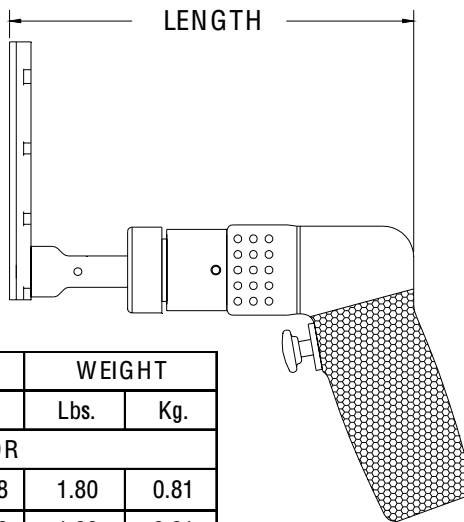
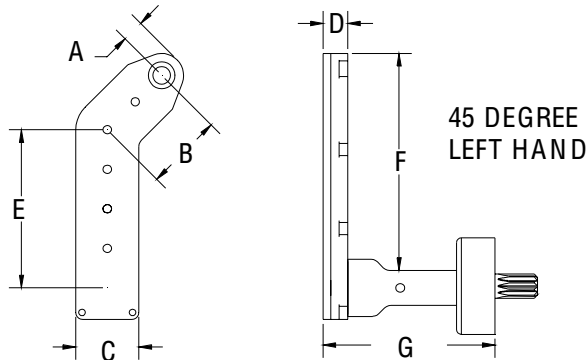


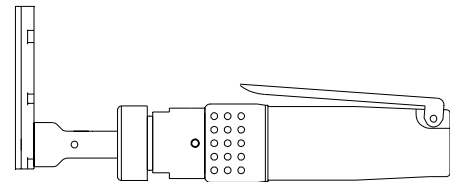
	A	B	C	D	E	F	G	SERIES 2 L DRILL	
INCH	.327	1.109	.900	.350	2.250	3.106	1.858	MAXIMUM RECOMMENDED	.250 INCH
MM	8.30	28.16	22.86	8.89	57.15	78.89	47.19	DRILL DIAMETER	6.35 mm



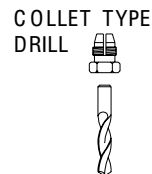
### 13824 ATTACHMENT ONLY SHORT



TOOL ORDER NUMBER	R.P.M.	LENGTH		WEIGHT	
		Inch	mm	Lbs.	Kg.
D SERIES .30 HP MOTOR					
16365	250	7.00	177.8	1.80	0.81
14543	500	7.00	177.8	1.80	0.81
14544	750	7.00	177.8	1.80	0.81
14545	1000	7.00	177.8	1.80	0.81
14546	1500	7.00	177.8	1.80	0.81
14547	2800	6.10	154.9	1.52	0.68
D2 SERIES .60 HP MOTOR					
16366	250	8.95	227.3	3.37	1.53
14548	450	8.35	212.0	2.67	1.21
14549	1000	8.35	212.0	2.67	1.21
14550	2000	7.10	180.3	2.42	1.09
14551	2700	7.10	180.3	2.42	1.09
14552	3500	7.10	180.3	2.42	1.09
RD2 .40 HP REVERSIBLE MOTOR					
16367	250	8.95	227.3	3.37	1.53
14553	450	8.35	212.0	2.92	1.32
14554	1000	8.35	212.0	2.92	1.32
14555	2000	7.10	180.3	2.67	1.21
14556	2700	7.10	180.3	2.67	1.21
14557	3500	7.10	180.3	2.67	1.21



Add an S after the tool order number for the straight handle option.



INTERNAL THREAD	
ADD TO TOOL No.	
1/4-28	A
10-32	C
9/32-40	E
5/16-24	F
COLLET	D