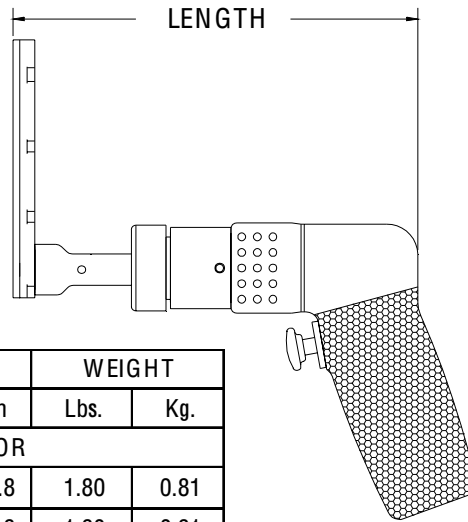
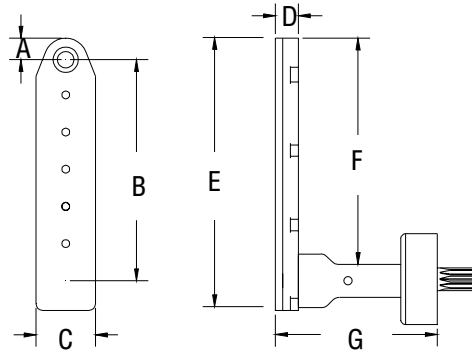


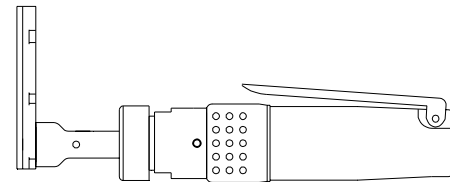
| | A | B | C | D | E | F | G | SERIES 2 L DRILL | |
|------|------|-------|-------|------|-------|-------|-------|---------------------------------------|-----------|
| INCH | .327 | 3.359 | .900 | .350 | 4.127 | 3.427 | 1.858 | MAXIMUM RECOMMENDED DRILL DIAMETER | .250 INCH |
| MM | 8.30 | 85.31 | 22.86 | 8.89 | 104.8 | 87.04 | 47.19 | | 6.35 mm |



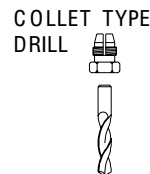
13820 ATTACHMENT ONLY SHORT



| TOOL ORDER NUMBER | R.P.M. | LENGTH | | WEIGHT | |
|-----------------------------|--------|--------|-------|--------|------|
| | | Inch | mm | Lbs. | Kg. |
| D SERIES .30 HP MOTOR | | | | | |
| 16353 | 250 | 7.00 | 177.8 | 1.80 | 0.81 |
| 14105 | 500 | 7.00 | 177.8 | 1.80 | 0.81 |
| 14106 | 750 | 7.00 | 177.8 | 1.80 | 0.81 |
| 14107 | 1000 | 7.00 | 177.8 | 1.80 | 0.81 |
| 14108 | 1500 | 7.00 | 177.8 | 1.80 | 0.81 |
| 14109 | 2800 | 6.10 | 154.9 | 1.52 | 0.68 |
| D2 SERIES .60 HP MOTOR | | | | | |
| 16354 | 250 | 8.95 | 227.3 | 3.37 | 1.53 |
| 14110 | 450 | 8.35 | 212.0 | 2.67 | 1.21 |
| 14111 | 1000 | 8.35 | 212.0 | 2.67 | 1.21 |
| 14112 | 2000 | 7.10 | 180.3 | 2.42 | 1.09 |
| 14113 | 2700 | 7.10 | 180.3 | 2.42 | 1.09 |
| 14114 | 3500 | 7.10 | 180.3 | 2.42 | 1.09 |
| RD2 .40 HP REVERSIBLE MOTOR | | | | | |
| 15995 | 250 | 8.95 | 227.3 | 3.37 | 1.53 |
| 14115 | 450 | 8.35 | 212.0 | 2.92 | 1.32 |
| 14116 | 1000 | 8.35 | 212.0 | 2.92 | 1.32 |
| 14117 | 2000 | 7.10 | 180.3 | 2.67 | 1.21 |
| 14118 | 2700 | 7.10 | 180.3 | 2.67 | 1.21 |
| 14119 | 3500 | 7.10 | 180.3 | 2.67 | 1.21 |



Add an S after the tool order number for the straight handle option.



| INTERNAL THREAD | |
|-----------------|---|
| ADD TO TOOL No. | |
| 1/4-28 | A |
| 10-32 | C |
| 9/32-40 | E |
| 5/16-24 | F |
| COLLET | D |