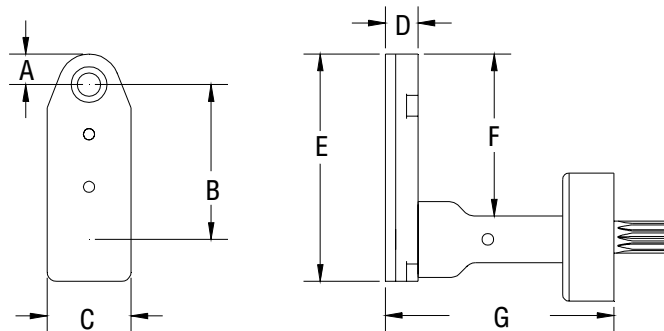


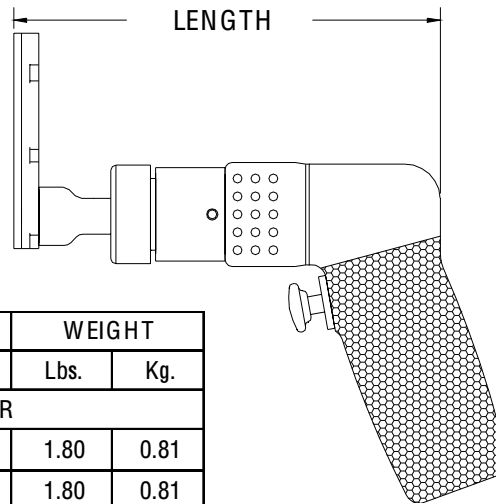
| | A | B | C | D | E | F | G | SERIES 2 L DRILL | |
|------|------|-------|-------|------|-------|-------|-------|---------------------------------------|-----------|
| INCH | .327 | 1.671 | .900 | .350 | 2.440 | 1.739 | 1.858 | MAXIMUM RECOMMENDED DRILL DIAMETER | .250 INCH |
| MM | 8.30 | 42.44 | 22.86 | 8.89 | 61.97 | 44.17 | 47.19 | | 6.35 mm |



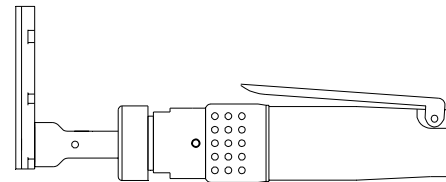
13816 ATTACHMENT ONLY SHORT



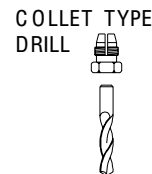
THIS ATTACHMENT REQUIRES A REVERSE RUNNING (K)
OR REVERSIBLE MOTOR.



| TOOL ORDER NUMBER | R.P.M. | LENGTH | | WEIGHT | |
|-----------------------------|--------|--------|-------|--------|------|
| | | Inch | mm | Lbs. | Kg. |
| DK SERIES .30 HP MOTOR | | | | | |
| 16341 | 250 | 7.00 | 177.8 | 1.80 | 0.81 |
| 14045 | 500 | 7.00 | 177.8 | 1.80 | 0.81 |
| 14046 | 750 | 7.00 | 177.8 | 1.80 | 0.81 |
| 14047 | 1000 | 7.00 | 177.8 | 1.80 | 0.81 |
| 14049 | 1500 | 7.00 | 177.8 | 1.80 | 0.81 |
| 14050 | 2800 | 6.10 | 154.9 | 1.52 | 0.68 |
| D2K SERIES .60 HP MOTOR | | | | | |
| 16342 | 250 | 8.95 | 227.3 | 3.37 | 1.53 |
| 14051 | 450 | 8.35 | 212.0 | 2.67 | 1.21 |
| 14052 | 1000 | 8.35 | 212.0 | 2.67 | 1.21 |
| 14053 | 2000 | 7.10 | 180.3 | 2.42 | 1.09 |
| 14054 | 2700 | 7.10 | 180.3 | 2.42 | 1.09 |
| 14055 | 3500 | 7.10 | 180.3 | 2.42 | 1.09 |
| RD2 .40 HP REVERSIBLE MOTOR | | | | | |
| 16343 | 250 | 8.95 | 227.3 | 3.37 | 1.53 |
| 14056 | 450 | 8.35 | 212.0 | 2.92 | 1.32 |
| 14057 | 1000 | 8.35 | 212.0 | 2.92 | 1.32 |
| 14058 | 2000 | 7.10 | 180.3 | 2.67 | 1.21 |
| 14059 | 2700 | 7.10 | 180.3 | 2.67 | 1.21 |
| 14060 | 3500 | 7.10 | 180.3 | 2.67 | 1.21 |



Add an S after the tool order number
for the straight handle option.



| INTERNAL THREAD | |
|-----------------|---|
| ADD TO TOOL No. | |
| 1/4-28 | A |
| 10-32 | C |
| 9/32-40 | E |
| 5/16-24 | F |
| COLLET | D |