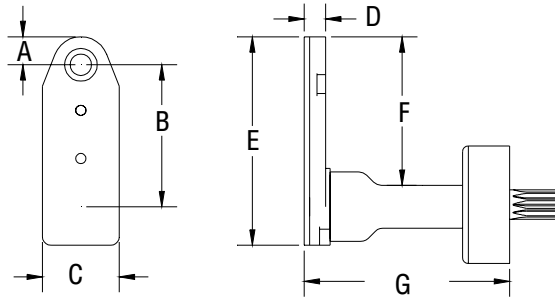


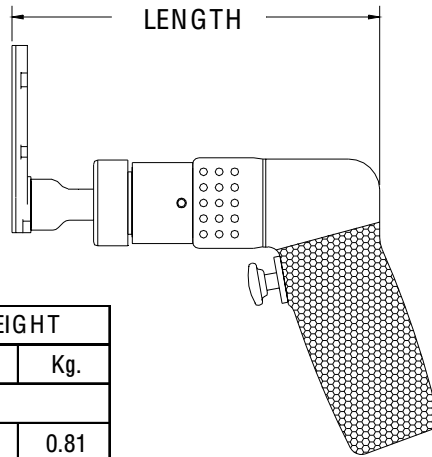
| | A | B | C | D | E | F | G | SERIES 1 L DRILL | |
|------|------|-------|-------|------|-------|-------|-------|---------------------|------------|
| INCH | .327 | 1.671 | .900 | .250 | 2.440 | 1.739 | 1.858 | MAXIMUM RECOMMENDED | .1875 INCH |
| MM | 8.30 | 42.44 | 22.86 | 6.35 | 61.97 | 44.17 | 47.19 | DRILL DIAMETER | 4.76 mm |



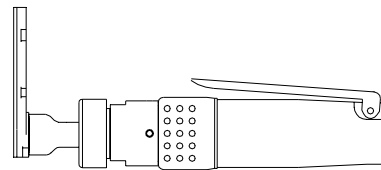
13804 ATTACHMENT ONLY SHORT



THIS ATTACHMENT REQUIRES A REVERSE RUNNING (K) OR REVERSIBLE MOTOR.



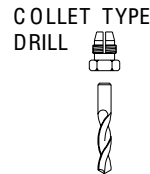
| TOOL ORDER NUMBER | R.P.M. | LENGTH | | WEIGHT | |
|-----------------------------|--------|--------|-------|--------|------|
| | | Inch | mm | Lbs. | Kg. |
| DK SERIES .30 HP MOTOR | | | | | |
| 16305 | 250 | 6.90 | 175.2 | 1.80 | 0.81 |
| 13855 | 500 | 6.90 | 175.2 | 1.80 | 0.81 |
| 13856 | 750 | 6.90 | 175.2 | 1.80 | 0.81 |
| 13857 | 1000 | 6.90 | 175.2 | 1.80 | 0.81 |
| 13858 | 1500 | 6.90 | 175.2 | 1.80 | 0.81 |
| 13859 | 2800 | 6.00 | 152.4 | 1.52 | 0.68 |
| D2K SERIES .60 HP MOTOR | | | | | |
| 16306 | 250 | 8.85 | 224.7 | 3.30 | 1.50 |
| 13860 | 450 | 8.25 | 209.5 | 2.67 | 1.21 |
| 13861 | 1000 | 8.25 | 209.5 | 2.67 | 1.21 |
| 13862 | 2000 | 7.00 | 177.8 | 2.42 | 1.10 |
| 13863 | 2700 | 7.00 | 177.8 | 2.42 | 1.10 |
| 13864 | 3500 | 7.00 | 177.8 | 2.42 | 1.10 |
| RD2 .40 HP REVERSIBLE MOTOR | | | | | |
| 16307 | 250 | 8.85 | 224.7 | 3.30 | 1.50 |
| 13865 | 450 | 8.25 | 209.5 | 2.92 | 1.32 |
| 13866 | 1000 | 8.25 | 209.5 | 2.92 | 1.32 |
| 13867 | 2000 | 7.00 | 177.8 | 2.67 | 1.21 |
| 13868 | 2700 | 7.00 | 177.8 | 2.67 | 1.21 |
| 13869 | 3500 | 7.00 | 177.8 | 2.67 | 1.21 |



Add an S after the tool order number for the straight handle option.



THREADED DRILL



COLLET TYPE DRILL

| INTERNAL THREAD | |
|-----------------|---|
| ADD TO TOOL No. | |
| 1/4-28 | A |
| 10-32 | C |
| 9/32-40 | E |
| 5/16-24 | F |
| COLLET | D |

PHONE: 1 775 883 1072 FAX: 1 775 883 4857