

TABLE I. FLATHEAD.

DASH NO	THREAD SIZE T	GRIP RANGE	IDENT MARK	SHANK LENGTH	
				A ±.015	M REF
1	.112-40UNC-3B	.010-.060	BLANK	.345	.230
2		.060-.085	1-RAD	.370	.230
3		.085-.110	2-RAD	.400	.230
4		.110-.135	3-RAD	.425	.230
5		.135-.160	4-RAD	.450	.230
6		.160-.185	5-RAD	.480	.230
7	.138-32UNC-3B	.010-.075	1-RAD	.438	.300
8		.075-.120	3-RAD	.500	.315
9		.120-.160	5-RAD	.500	.270
10		.160-.200	1-CIRC	.562	.290
11		.200-.240	2-CIRC	.625	.310
12	.240-.280	3-CIRC	.687	.330	
13	.164-32UNC-3B	.010-.075	1-RAD	.438	.300
14		.075-.120	3-RAD	.500	.315
15		.120-.160	5-RAD	.500	.270
16		.160-.200	1-CIRC	.625	.350
17		.200-.240	2-CIRC	.625	.305
18	.240-.280	3-CIRC	.687	.340	
19	.190-24UNC-3B	.010-.080	BLANK	.531	.380
20		.080-.130	1-RAD	.594	.390
21		.130-.180	2-RAD	.641	.390
22		.180-.230	3-RAD	.703	.395
23		.230-.280	4-RAD	.750	.395
24	.280-.330	5-RAD	.797	.385	
25	.190-32UNF-3B	.010-.080	BLANK	.531	.380
26		.080-.130	1-RAD	.594	.390
27		.130-.180	2-RAD	.641	.390
28		.180-.230	3-RAD	.703	.395
29		.230-.280	4-RAD	.750	.395
30	.280-.330	5-RAD	.797	.385	
31	.250-20UNC-3B	.020-.080	BLANK	.625	.450
32		.080-.140	1-RAD	.687	.450
33		.140-.200	2-RAD	.750	.450
34		.200-.260	3-RAD	.812	.445
35		.260-.320	4-RAD	.875	.445
36	.320-.380	5-RAD	.937	.445	

Ⓢ DENOTES CHANGES

USER ACTIVITIES:
ARMY-AT, ME, MI

REVIEWER ACTIVITIES:
ARMY-AV, EA
NAVY-OS
DLA-IS
NSA-NS

This military standard is approved for use by all Departments and Agencies of the Department of Defense. Selection for all new engineering and design applications and for repetitive use shall be made from this document when applicable.

P.A. Other Cust	AR 99 AS	INTERNATIONAL INTEREST	TITLE NUT, PLAIN, BLIND RIVET- FLAT AND COUNTERSUNK HEAD, OPEN END	MILITARY STANDARD MS27130
PROCUREMENT SPECIFICATION NONE	SUPERSEDES: IN PART-NAS 452, NAS 453, NAS 1329 AND NAS 1330	PAGE 1	OF 5	

APPROVED 21 MAR 61 REVISED (F) 12 JAN 87

TABLE I. FLATHEAD. - CONTINUED

DASH NO	THREAD SIZE T	GRIP RANGE	IDENT MARK	SHANK LENGTH	
				A +.015	H REF.
37	.250-28UNF-3B	.020-.080	BLANK	.625	.450
38		.080-.140	1-RAD	.687	.450
39		.140-.200	2-RAD	.750	.450
40		.200-.260	3-RAD	.812	.445
41		.260-.320	4-RAD	.875	.445
42		.320-.380	5-RAD	.937	.445
43	.3125-18UNC-3B	.030-.125	BLANK	.750	.505
44		.125-.200	1-RAD	.875	.555
45		.200-.275	2-RAD	.937	.540
46		.275-.350	3-RAD	1.032	.560
47		.350-.425	4-RAD	1.125	.580
48		.425-.500	5-RAD	1.187	.565
49	.3125-24UNF-3B	.030-.125	BLANK	.750	.505
50		.125-.200	1-RAD	.875	.555
51		.200-.275	2-RAD	.937	.540
52		.275-.350	3-RAD	1.032	.560
53		.350-.425	4-RAD	1.125	.580
54		.425-.500	5-RAD	1.187	.565
55	.375-16UNC-3B	.030-.115	BLANK	.844	.585
56		.115-.200	1-RAD	.938	.595
57		.200-.285	2-RAD	1.031	.605
58		.285-.370	3-RAD	1.125	.615
59		.370-.455	4-RAD	1.218	.630
60		.455-.540	5-RAD	1.312	.635
61	.375-24UNF-3B	.030-.115	BLANK	.844	.585
62		.115-.200	1-RAD	.938	.595
63		.200-.285	2-RAD	1.031	.605
64		.285-.370	3-RAD	1.125	.615
65		.370-.455	4-RAD	1.218	.630
66		.455-.540	5-RAD	1.312	.635
67	.500-13UNC-3B	.050-.150	BLANK	.906	.605
68		.150-.250	1-RAD	1.031	.630
69		.250-.350	2-RAD	1.141	.640
70		.350-.450	3-RAD	1.250	.650
71	.500-20UNF-3B	.050-.150	BLANK	.906	.605
72		.150-.250	1-RAD	1.031	.630
73		.250-.350	2-RAD	1.141	.640
74		.350-.450	3-RAD	1.250	.650

TABLE II. FLATHEAD.

THREAD SIZE T	Ø B +.015	C NOM	Ø D +.000 -.004	E MAX	F +.005 -.000	G MAX	INSTALL DRILL SIZE (REF)	INSTALL HOLE SIZE		KEYWAY	
								MIN	MAX	P +.003 -.000	H
.138	.325	.032	.189	.240	.054	.023	#12	.189	.193	.062	.056-.058
.164	.357	.032	.221	.271	.054	.023	#2	.221	.226	.062	.056-.058
.190	.406	.038	.250	.302	.054	.023	E	.250	.256	.062	.056-.058
.250	.475	.058	.332	.382	.054	.035	Q	.332	.338	.062	.056-.058
.3125	.665	.062	.413	.505	.120	.040	Z	.413	.423	.128	.097-.102
.375	.781	.088	.490	.597	.120	.040	12.5 mm	.490	.500	.128	.110-.115
.500	.906	.085	.625	.733	.120	.040	5/8	.625	.635	.128	.110-.115

APPROVED 21 MAR 61 REVISED FOR CHANGES SEE PAGE 5

P.A. AR	INTERNATIONAL INTEREST	TITLE NUT, PLAIN, BLIND RIVET- FLAT AND COUNTERSUNK HEAD, OPEN END	MILITARY STANDARD
Other Cust 99 AS			MS27130
PROCUREMENT SPECIFICATION NONE	SUPERSEDES: IN PART - NAS 452, NAS 453, NAS 1329 AND NAS 1330	PAGE 2	OF 5

USER ACTIVITIES:
 ARMY-AT, ME, M
 NAVY-O
 DLA-IS
 NSA-NS
 REVIEWER ACTIVITIES:
 ARMY-AV, FA
 NAVY-O
 DLA-IS
 NSA-NS
 This military standard is approved for use by all Departments and Agencies of the Department of Defense. Selection for all engineering and design applications and for repetitive use shall be made from this document when applicable.

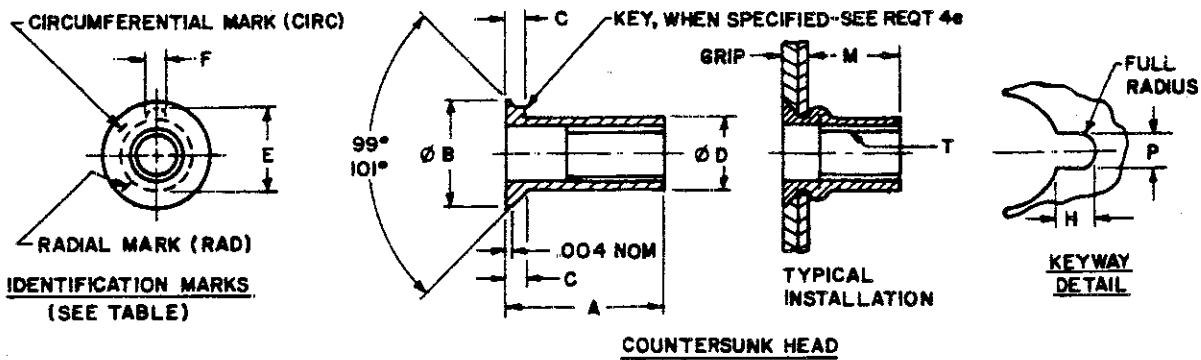


TABLE III. COUNTERSUNK HEAD.

DASH NO	THREAD SIZE T	GRIP RANGE	IDENT MARK	SHANK LENGTH	
				A ±.015	H REF
81	.112-40UNC-3B	.050-.081	BLANK	.370	.235
82		.081-.106	1-RAD	.395	.235
83		.106-.131	2-RAD	.420	.235
84		.131-.156	3-RAD	.450	.235
85		.156-.181	4-RAD	.475	.235
86		.181-.206	5-RAD	.500	.235
87	.138-32UNC-3B	.065-.106	BLANK	.500	.325
88		.106-.161	2-RAD	.500	.280
89		.161-.201	4-RAD	.562	.295
90		.201-.241	1-CIRC	.625	.315
91		.241-.281	2-CIRC	.625	.270
92	.281-.321	3-CIRC	.687	.290	
93	.164-32UNC-3B	.065-.106	BLANK	.500	.325
94		.106-.161	2-RAD	.500	.280
95		.161-.201	4-RAD	.562	.290
96		.201-.241	1-CIRC	.625	.310
97		.241-.281	2-CIRC	.687	.325
98		.281-.321	3-CIRC	.687	.295
127	.190-24UNC-3B	.065-.116	BLANK	.578	.395
128		.116-.166	1-RAD	.625	.385
129		.166-.216	2-RAD	.687	.400
130		.216-.266	3-RAD	.734	.390
131		.266-.316	4-RAD	.781	.385
132	.316-.366	5-RAD	.844	.400	
99	.190-32UNF-3B	.065-.116	BLANK	.578	.395
100		.116-.166	1-RAD	.625	.385
101		.166-.216	2-RAD	.687	.400
102		.216-.266	3-RAD	.734	.390
103		.266-.316	4-RAD	.781	.385
104		.316-.366	5-RAD	.844	.400
133	.250-20UNC-3B	.089-.151	BLANK	.687	.440
134		.151-.211	1-RAD	.750	.440
135		.211-.271	2-RAD	.812	.440
136		.271-.331	3-RAD	.875	.435
137		.331-.391	4-RAD	.937	.435
138	.391-.451	5-RAD	1.000	.445	

USER ACTIVITIES:
ARMY-AT, ME, MI

REVIEWER ACTIVITIES:
ARMY-AV, EA
NAVY-OS
DLA-IS
NSA-NS

This military standard is approved for use by all Departments and Agencies of the Department of Defense. Selection for all new engineering and design applications and for repetitive use shall be made from this document when applicable.

P.A. Other Cust	AR	INTERNATIONAL INTEREST	TITLE NUT, PLAIN, BLIND RIVET- FLAT AND COUNTERSUNK HEAD, OPEN END	MILITARY STANDARD	
	99 AS			MS27130	
PROCUREMENT SPECIFICATION NONE	SUPERSEDES: IN PART-NAS 452, NAS 453, NAS 1329 AND NAS 1330			PAGE 3	OF 5

APPROVED 21 MAR 61 REVISED (F) FOR CHANGES SEE PAGE 5

TABLE III. COUNTERSUNK HEAD. - CONTINUED

DASH NO	THREAD SIZE T	GRIP RANGE	IDENT MARK	SHANK LENGTH	
				A ±.015	H REF
105	.250-28UNF-3B	.089-.151	BLANK	.687	.440
106		.151-.211	1-RAD	.750	.440
107		.211-.271	2-RAD	.812	.440
108		.271-.331	3-RAD	.875	.435
109		.331-.391	4-RAD	.937	.435
110		.391-.451	5-RAD	1.000	.445
139	.3125-18UNC-3B	.106-.181	BLANK	.844	.540
140		.181-.256	1-RAD	.937	.560
141		.256-.331	2-RAD	1.000	.550
142		.331-.406	3-RAD	1.094	.565
143		.406-.481	4-RAD	1.156	.555
144		.481-.556	5-RAD	1.250	.575
111	.3125-24UNF-3B	.106-.181	BLANK	.844	.540
112		.181-.256	1-RAD	.937	.560
113		.256-.331	2-RAD	1.000	.550
114		.331-.406	3-RAD	1.094	.565
115		.406-.481	4-RAD	1.156	.555
116		.481-.556	5-RAD	1.250	.575
145	.375-16UNC-3B	.125-.211	BLANK	.938	.580
146		.211-.296	1-RAD	1.031	.590
147		.296-.381	2-RAD	1.125	.600
148		.381-.466	3-RAD	1.219	.615
149		.466-.551	4-RAD	1.312	.625
150		.551-.636	5-RAD	1.422	.650
117	.375-24UNF-3B	.125-.211	BLANK	.938	.580
118		.211-.296	1-RAD	1.031	.590
119		.296-.381	2-RAD	1.125	.600
120		.381-.466	3-RAD	1.219	.615
121		.466-.551	4-RAD	1.312	.625
122		.551-.636	5-RAD	1.422	.650
151	.500-13UNC-3B	.125-.226	BLANK	.984	.610
152		.226-.326	1-RAD	1.094	.620
153		.326-.426	2-RAD	1.218	.640
154		.426-.526	3-RAD	1.312	.635
123	.500-20UNF-3B	.125-.226	BLANK	.984	.610
124		.226-.326	1-RAD	1.094	.620
125		.326-.426	2-RAD	1.218	.640
126		.426-.526	3-RAD	1.312	.635

TABLE IV. COUNTERSUNK HEAD.

THREAD SIZE T	Ø B REF	C MAX	Ø D +.000 - .004	E MAX	F +.005 - .000	INSTALL DRILL SIZE (PCT)	INSTALL HOLE SIZE		KEYWAY	
							MIN	MAX	P +.003 - .000	H
.138	.323	.063	.189	.240	.054	#12	.189	.193	.062	.056 .058
.164	.355	.063	.221	.271	.054	#2	.221	.226	.062	.055 .058
.190	.391	.065	.250	.302	.054	E	.250	.256	.062	.056 .058
.250	.529	.089	.332	.382	.054	Q	.332	.338	.062	.056 .058
.3125	.656	.104	.413	.505	.120	Z	.413	.423	.128	.097 .102
.375	.770	.124	.490	.597	.120	12.5 mm	.490	.500	.128	.110 .115
.500	.906	.124	.625	.733	.120	5/8	.625	.635	.128	.110 .115

APPROVED 21 MAR 61 REVISED FOR CHANGES SEE PAGE 5

P.A. AR	INTERNATIONAL INTEREST	TITLE	MILITARY STANDARD
Other Cust 99 AS		NUT, PLAIN, BLIND RIVET- FLAT AND COUNTERSUNK HEAD, OPEN END	MS27130
PROCUREMENT SPECIFICATION NONE	SUPERSEDES: IN PART-NAS 452, NAS 453, NAS 1329 AND NAS 1330	PAGE 4	OF 5

USER ACTIVITIES:
ARMY-AT, ME, MI

REVIEWER ACTIVITIES:
ARMY-AM, EA
NAVY-
DLA-
NSA-NS

Selection for all new engineering and design applications and for repetitive use shall be made from this document where applicable.

REQUIREMENTS:

1. MATERIAL.
 - a. STEEL, CARBON, GRADE 1008 (UNS G10080), GRADE 1010 (UNS G10100), GRADE 1108 (UNS G11080), OR GRADE 1110 (UNS G11100) IN ACCORDANCE WITH ASTM A549 OR ASTM A576 AS APPLICABLE. GRADE 1215 (UNS G12150) IN ACCORDANCE WITH ASTM A108 MAY BE USED WHEN REQUIRED.
 - b. ALUMINUM ALLOY, GRADE 6053-T4 * (UNS A96053) IN ACCORDANCE WITH ASTM B316 OR QQ-A-430 AS APPLICABLE. *EXCEPT TEMPER. GRADE 6061-T6 (UNS A96061) IN ACCORDANCE WITH QQ-A-225/8 MAY BE USED WHEN REQUIRED.
 - c. STEEL, CORROSION RESISTANT, TYPE 430 (UNS S43000) IN ACCORDANCE WITH ASTM A276 OR ASTM A580 AS APPLICABLE.
 - d. BRASS, ALLOY NO.260 (UNS C26000) OR ALLOY NO. 270 (UNS C27000) IN ACCORDANCE WITH QQ-W-32 (FLAT HEAD ONLY)
2. PROTECTIVE COATING AND SURFACE TREATMENT.
 - a. STEEL SHALL BE CADMIUM PLATED IN ACCORDANCE WITH QQ-P-416, TYPE II, CLASS 3
 - b. ALUMINUM ALLOY, SHALL BE ANODIZED IN ACCORDANCE WITH MIL-A-8625, TYPE II
 - c. CORROSION RESISTANT STEEL SHALL BE CLEANED, DESCALED AND PASSIVATED IN ACCORDANCE WITH ASTM A380.
3. THREADS. THE THREADS SHALL BE IN ACCORDANCE WITH MIL-S-7742 AND SHALL HAVE A MINIMUM OF 8 FULL THREADS.
4. PART NUMBER. THE PART NUMBER CONSISTS OF THE MS NUMBER, PLUS THE DASH NUMBER.
 - a. FOR STEEL NUT, ADD "S" BEFORE THE DASH NUMBER. EXAMPLE: MS27130-S1
 - b. FOR ALUMINUM ALLOY NUT, ADD "A" BEFORE THE DASH NUMBER. EXAMPLE: MS27130-A1
 - c. FOR CORROSION RESISTANT STEEL, ADD "CR" BEFORE THE DASH NUMBER. EXAMPLE: MS27130-CR1
 - d. FOR BRASS NUT, ADD "B" BEFORE THE DASH NUMBER. EXAMPLE: MS27130-B1
 - e. FOR A KEYED NUT, ADD "K" AFTER THE DASH NUMBER. EXAMPLE: MS27130-S1K
5. MARKING. NUTS SHALL BE PERMANENTLY MARKED IN ACCORDANCE WITH TABLE I OR III. IN ADDITION THE MANUFACTURERS IDENTIFICATION MARK MAY BE INCLUDED. THE MARKING SHALL NOT ADVERSELY AFFECT THE FUNCTION OR SERVICEABILITY OF THE NUT.

NOTES:

1. DIMENSIONS. UNLESS OTHERWISE SPECIFIED, ALL DIMENSIONS ARE IN INCHES.
2. SPECIAL PULL-UP TOOLS ARE REQUIRED FOR PROPER INSTALLATION. MANUFACTURER'S RECOMMENDATIONS SHOULD BE FOLLOWED.
3. IN THE EVENT OF A CONFLICT BETWEEN THE TEXT OF THIS STANDARD AND THE REFERENCES CITED HEREIN, THE TEXT OF THIS STANDARD SHALL TAKE PRECEDENCE.
4. REFERENCED GOVERNMENT (OR NON-GOVERNMENT) DOCUMENTS OF THE ISSUE LISTED IN THAT ISSUE OF THE DEPARTMENT OF DEFENSE INDEX OF SPECIFICATIONS AND STANDARDS (DODISS) SPECIFIED IN THE SOLICITATION FORM A PART OF THIS STANDARD TO THE EXTENT SPECIFIED HEREIN.
5. COUNTERSUNK HEAD NUTS SHALL NOT BE SPECIFIED IN BRASS MATERIAL.

USER ACTIVITIES:
ARMY-AT, ME, MI

REVIEWER ACTIVITIES:
ARMY-AV, EA
NAVY-OS
DLA-IS
NSA-NS

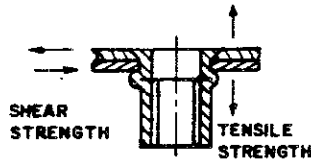


TABLE V

THREAD SIZE T	TENSILE STRENGTH LBS-MIN				SINGLE SHEAR STRENGTH LBS-MIN.			
	AL ALY	STEEL	CRES	BRASS	AL ALY	STEEL	CRES	BRASS
.112	225	390	530	400	135	270	440	255
.138	320	560	760	575	200	390	640	365
.164	415	730	980	750	250	500	820	475
.190	525	930	1250	950	320	640	1040	610
.250	980	1580	2140	1720	600	940	1530	1050
.3125	1360	2340	3170	2550	790	1490	2420	1570
.375	1770	3330	4500	3350	1070	2070	3360	2070
.500	2650	4200	—	—	1830	2900	—	—

INTERCHANGEABILITY

THE FOLLOWING OLD DASH NUMBERS OF MS27130 ARE CANCELLED AFTER 22 MARCH 1974 AND SUPERSEDED BY THE NEW DASH NUMBERS OF MS27130 GIVEN IN THE PRECEDING SHEETS. THE CANCELLED DASH NUMBERS MAY BE USED UNTIL EXISTING STOCKS ARE DEPLETED. USE ONLY THE NEW DASH NUMBERS FOR DESIGN AND ENGINEERING. REPLACEMENT SHALL BE IN ACCORDANCE WITH TABLE VI. OLD DASH NUMBERS FOLLOWED BY A "K" ARE SUPERSEDED BY THE NEW DASH NUMBERS GIVEN IN TABLE VI, FOLLOWED BY A "K".

TABLE VI

OLD MS27130	NEW MS27130	OLD MS27130	NEW MS27130	OLD MS27130	NEW MS27130	OLD MS27130	NEW MS27130	OLD MS27130	NEW MS27130
DASH NO		DASH NO		DASH NO		DASH NO		DASH NO	
1	S1	17	S15	33	S50	48	A73	66	A45
2	A1	18	A15	34	A50	49	S31	67	CR43
3	S2	19	S25	35	S51	50	A31	68	CR44
4	A2	20	A25	36	A51	51	S32	69	CR45
5	S3	21	S26	37	S61	52	A32	70	S55
6	A3	22	A26	38	A61	53	S33	71	S56
7	S7	23	S27	39	S62	54	A33	72	S57
8	A7	24	A27	40	A62	55	CR31	73	CR55
9	S8	25	S37	41	S63	56	CR32	74	CR56
10	A8	26	A37	42	A63	57	CR33	75	CR57
11	S9	27	S38	43	S71	58	A43	76	A5
12	A9	28	A38	44	A71	59	A44	77	A6
13	S13	29	S39	45	S72	60	S44	78	A16
14	A13	30	A39	46	A72	61	A44	79	A17
15	S14	31	S49	47	S73	62	S45	80	A29
16	A14	32	A49			63			

This military standard is approved for use by all Departments and Agencies of the Department of Defense. Selection for all new engineering and design applications and for repetitive use shall be made from this document when applicable.

PA. AR	INTERNATIONAL INTEREST	TITLE	MILITARY STANDARD
Other Cust	99 AS	NUT, PLAIN, BLIND RIVET- FLAT AND COUNTERSUNK HEAD, OPEN END	MS27130
PROCUREMENT SPECIFICATION	SUPERSEDES:	PAGE	OF
NONE	IN PART- NAS 452, NAS 453, NAS 1329 AND NAS 1330	5	5

APPROVED 21 MAR 61 REVISED F FOR CHANGES SEE PAGE 5

MS27130 Vs.
BFG Part Numbers

Revised 6-25-80 To Include
Revision "D" of MS27130

FLATHEAD - OPEN END

MS27130	BFG	MS27130	BFG	MS27130	BFG	MS27130	BFG
-	Part No.	-	Part No.	-	Part No.	-	Part No.
-A1	A4-60	-A7	A6-75	-A13	A8-75	-A19	A1024-80
-A1K	A4K60	-A7K	A6K75	-A13K	A8K-75	-A19K	A1024K80
-S1	S4-60	-S7	S6-75	-S13	S8-75	-S19	S1024-80
-S1K	S4K60	-S7K	S6K75	-S13K	S8K75	-S19K	S1024K80
-CR1	SS4-60	-CR7	SS6-75	-CR13	SS8-75	-CR19	SS1024-80
-CR1K	SS4K60	-CR7K	SS6K75	-CR13K	SS8K75	-CR19K	SS1024K80
-B1	BR4-60	-B7	BR6-75	-B13	BR8-75	-B19	BR1024-80
-B1K	BR4K60	-B7K	BR6K75	-B13K	BR8K75	-B19K	BR1024K80
-A2	A4-85	-A8	A6-120	-A14	A8-120	-A20	A1024-130
-A2K	A4K85	-A8K	A6K120	-A14K	A8K120	-A20K	A1024K130
-S2	S4-85	-S8	S6-120	-S14	S8-120	-S20	S1024-130
-S2K	S4K85	-S8K	S6K120	-S14K	S8K120	-S20K	S1024K130
-CR2	SS4-85	-CR8	SS6-120	-CR14	SS8-120	-CR20	SS1024-130
-CR2K	SS4K85	-CR8K	SS6K120	-CR14K	SS8K120	-CR20K	SS1024K130
-B2	BR4-85	-B8	BR6-120	-B14	BR8-120	-B20	BR1024-130
-B2K	BR4K85	-B8K	BR6K120	-B14K	BR8K120	-B20K	BR1024K130
-A3	A4-110	-A9	A6-160	-A15	A8-160	-A21	A1024-180
-A3K	A4K110	-A9K	A6K160	-A15K	A8K160	-A21K	A1024K180
-S3	S4-110	-S9	S6-160	-S15	S8-160	-S21	S1024-180
-S3K	S4K110	-S9K	S6K160	-S15K	S8K160	-S21K	S1024K180
-CR3	SS4-110	-CR9	SS6-160	-CR15	SS8-160	-CR21	SS1024-180
-CR3K	SS4K110	-CR9K	SS6K160	-CR15K	SS8K160	-CR21K	SS1024K180
-B3	BR4-110	-B9	BR6-160	-B15	BR8-160	-BR21	BR1024-180
-B3K	BR4K110	-B9K	BR6K160	-B15K	BR8K160	-BR21K	BR1024K180
-A4	A4-135	-A10	A6-200	-A16	A8-200	-A22	A1024-230
-A4K	A4K135	-A10K	A6K200	-A16K	A8K200	-A22K	A1024K230
-S4	S4-135	-S10	S6-200	-S16	S8-200	-S22	S1024-230
-S4K	S4K135	-S10K	S6K200	-S16K	S8K200	-S22K	S1024K230
-CR4	SS4-135	-CR10	SS6-200	-CR16	SS8-200	-CR22	SS1024-230
-CR4K	SS4K135	-CR10K	SS6K200	-CR16K	SS8K200	-CR22K	SS1024K230
-B4	BR4-135	-B10	BR6-200	-B16	BR8-200	-B22	BR1024-230
-B4K	BR4K135	-B10K	BR6K200	-B16K	BR8K200	-B22K	BR1024K230
-A5	A4-160	-A11	A6-240	-A17	A8-240	-A23	A1024-280
-A5K	A4K160	-A11K	A6K240	-A17K	A8K240	-A23K	A1024K280
-S5	S4-160	-S11	S6-240	-S17	S8-240	-S23	S1024-280
-S5K	S4K160	-S11K	S6K240	-S17K	S8K240	-S23K	S1024K280
-CR5	SS4-160	-CR11	SS6-240	-CR17	SS8-240	-CR23	SS1024-280
-CR5K	SS4K160	-CR11K	SS6K240	-CR17K	SS8K240	-CR23K	SS1024K280
-B5	BR4-160	-B11	BR6-240	-B17	BR8-240	-B23	BR1024-280
-B5K	BR4K160	-B11K	BR6K240	-B17K	BR8K240	-B23K	BR1024K280
-A6	A4-185	-A12	A6-280	-A18	A8-280	-A24	A1024-330
-A6K	A4K185	-A12K	A6K280	-A18K	A8K280	-A24K	A1024K330
-S6	S4-185	-S12	S6-280	-S18	S8-280	-S24	S1024-330
-S6K	S4K185	-S12K	S6K280	-S18K	S8K280	-S24K	S1024K330
-CR6	SS4-185	-CR12	SS6-280	-CR18	SS8-280	-CR24	SS1024-330
-CR6K	SS4K185	-CR12K	SS6K280	-CR18K	SS8K280	-CR24K	SS1024K330
-B6	BR4-185	-B12	BR6-280	-B18	BR8-280	-B24	BR1024-330
-B6K	BR4K185	-B12K	BR6K280	-B18K	BR8K280	-B24K	BR1024K330

A = Aluminum
S = Steel

CR = Stainless Steel
B = Brass

K = Keyed
- = Keyless

FLATHEAD - OPEN END

MS27130	BFG	MS27130	BFG	MS27130	BFG	MS27130	BFG
-	Part No.	-	Part No.	-	Part No.	-	Part No.
-A25	A10-80	-A31	A25-80	-A37	A2528-80	-A43	A31-125
-A25K	A10K80	-A31K	A25K80	-A37K	A2528K80	-A43K	A31K125
-S25	S10-80	-S31	S25-80	-S37	S2528-80	-S43	S31-125
-S25K	S10K80	-S31K	S25K80	-S37K	S2528K80	-S43K	S31K125
-CR25	SS10-80	-CR31	SS25-80	-CR37	SS2528-80	-CR43	SS31-125
-CR25K	SS10K80	-CR31K	SS25K80	-CR37K	SS2528K80	-CR43K	SS31K125
-B25	BR10-80	-B31	BR25-80	-B37	BR2528-80	-B43	BR31-125
-B25K	BR10K80	-B31K	BR25K80	-B37K	BR2528K80	-B43K	BR31K125
-A26	A10-130	-A32	A25-140	-A38	A2528-140	-A44	A31-200
-A26K	A10K130	-A32K	A25K140	-A38K	A2528K140	-A44K	A31K200
-S26	S10-130	-S32	S25-140	-S38	S2528-140	-S44	S31-200
-S26K	S10K130	-S32K	S25K140	-S38K	S2528K140	-S44K	S31K200
-CR26	SS10-130	-CR32	SS25-140	-CR38	SS2528-140	-CR44	SS31-200
-CR26K	SS10K130	-CR32K	SS25K140	-CR38K	SS2528K140	-CR44K	SS31K200
-B26	BR10-130	-B32	BR25-140	-B38	BR2528-140	-B44	BR31-200
-B26K	BR10K130	-B32K	BR25K140	-B38K	BR2528K140	-B44K	BR31K200
-A27	A10-180	-A33	A25-200	-A39	A2528-200	-A45	A31-275
-A27K	A10K180	-A33K	A25K200	-A39K	A2528K200	-A45K	A31K275
-S27	S10-180	-S33	S25-200	-S39	S2528-200	-S45	S31-275
-S27K	S10K180	-S33K	S25K200	-S39K	S2528K200	-S45K	S31K275
-CR27	SS10-180	-CR33	SS25-200	-CR39	SS2528-200	-CR45	SS31-275
-CR27K	SS10K180	-CR33K	SS25K200	-CR39K	SS2528K200	-CR45K	SS31K275
-B27	BR10-180	-B33	BR25-200	-B39	BR2528-200	-B45	BR31-275
-B27K	BR10K180	-B33K	BR25K200	-B39K	BR2528K200	-B45K	BR31K275
-A28	A10-230	-A34	A25-260	-A40	A2528-260	-A46	A31-350
-A28K	A10K230	-A34K	A25K260	-A40K	A2528K260	-A46K	A31K350
-S28	S10-230	-S34	S25-260	-S40	S2528-260	-S46	S31-350
-S28K	S10K230	-S34K	S25K260	-S40K	S2528K260	-S46K	S31K350
-CR28	SS10-230	-CR34	SS25-260	-CR40	SS2528-260	-CR46	SS31-350
-CR28K	SS10K230	-CR34K	SS25K260	-CR40K	SS2528K260	-CR46K	SS31K350
-B28	BR10-230	-B34	BR25-260	-B40	BR2528-260	-B46	BR31-350
-B28K	BR10K230	-B34K	BR25K260	-B40K	BR2528K260	-B46K	BR31K350
-A29	A10-280	-A35	A25-320	-A41	A2528-320	-A47	A31-425
-A29K	A10K280	-A35K	A25K320	-A41K	A2528K320	-A47K	A31K425
-S29	S10-280	-S35	S25-320	-S41	S2528-320	-S47	S31-425
-S29K	S10K280	-S35K	S25K320	-S41K	S2528K320	-S47K	S31K425
-CR29	SS10-280	-CR35	SS25-320	-CR41	SS2528-320	-CR47	SS31-425
-CR29K	SS10K280	-CR35K	SS25K320	-CR41K	SS2528K320	-CR47K	SS31K425
-B29	BR10-280	-B35	BR25-320	-B41	BR2528-320	-B47	BR31-425
-B29K	BR10K280	-B35K	BR25K320	-B41K	BR2528K320	-B47K	BR31K425
-A30	A10-330	-A36	A25-380	-A42	A2528-380	-A48	A31-500
-A30K	A10K330	-A36K	A25K380	-A42K	A2528K380	-A48K	A31K500
-S30	S10-330	-S36	S25-380	-S42	S2528-380	-S48	S31-500
-S30K	S10K330	-S36K	S25K380	-S42K	S2528K380	-S48K	S31K500
-CR30	SS10-330	-CR36	SS25-380	-CR42	SS2528-380	-CR48	SS31-500
-CR30K	SS10K330	-CR36K	SS25K380	-CR42K	SS2528K380	-CR48K	SS31K500
-B30	BR10-330	-B36	BR25-380	-B42	BR2528-380	-B48	BR31-500
-B30K	BR10K330	-B36K	BR25K380	-B42K	BR2528K380	-B48K	BR31K500

FLATHEAD - OPEN END

MS27130	BFG	MS27130	BFG	MS27130	BFG	MS27130	BFG
-	Part No.	-	Part No.	-	Part No.	-	Part No.
-A49	A3124-125	-B55	BR37-115	-S62K	S3724K200	-A69	A50-350
-A49K	A3124K125	-B55K	BR37K115	-CR62	SS3724-200	-A69K	A50K350
-S49	S3124-125	-A56	A37-200	-CR62K	SS3724K200	-S69	S50-350
-S49K	S3124K125	-A56K	A37K200	-B62	BR3724-200	-S69K	S50K350
-CR49	SS3124-125	-S56	S37-200	-B62K	BR3724K200	-CR69	SS50-350
-CR49K	SS3124K125	-S56K	S37K200	-A63	A3724-285	-CR69K	SS50K350
-B49	BR3124-125	-CR56	SS37-200	-A63K	A3724K285	-B69	BR50-350
-B49K	BR3124K125	-CR56K	SS37K200	-S63	S3724-285	-B69K	BR50K350
-A50	A3124-200	-B56	BR37-200	-S63K	S3724K285	-A70	A50-450
-A50K	A3124K200	-B56K	BR37K200	-CR63	SS3724-285	-A70K	A50K450
-S50	S3124-200	-A57	A37-285	-CR63K	SS3724K285	-S70	S50-450
-S50K	S3124K200	-A57K	A37K285	-B63	BR3724-285	-S70K	S50K450
-CR50	SS3124-200	-S57	S37-285	-B63K	BR3724K285	-CR70	SS50-450
-CR50K	SS3124K200	-S57K	S37K285	-A64	A3724-370	-CR70K	SS50K450
-B50	BR3124-200	-CR57	SS37-285	-A64K	A3724K370	-B70	BR50-450
-B50K	BR3124K200	-CR57K	SS37K285	-S64	S3724-370	-B70K	BR50K450
-A51	A3124-275	-B57	BR37-285	-S64K	S3724K370	-A71	A5020-150
-A51K	A3124K275	-B57K	BR37K285	-CR64	SS3724-370	-A71K	A5020K150
-S51	S3124-275	-A58	A37-370	-CR64K	SS3724K370	-S71	S5020-150
-S51K	S3124K275	-A58K	A37K370	-B64	BR3724-370	-S71K	S5020K150
-CR51	SS3124-275	-S58	S37-370	-B64K	BR3724K370	-CR71	SS5020-150
-CR51K	SS3124K275	-S58K	S37K370	-A65	A3724-455	-CR71K	SS5020K150
-B51	BR3124-275	-CR58	SS37-370	-A65K	A3724K455	-B71	BR5020-150
-B51K	BR3124K275	-CR58K	SS37K370	-S65	S3724-455	-B71K	BR5020K150
-A52	A3124-350	-B58	BR37-370	-S65K	S3724K455	-A72	A5020-250
-A52K	A3124K350	-B58K	BR37K370	-CR65	SS3724-455	-A72K	A5020K250
-S52	S3124-350	-A59	A37-455	-CR65K	SS3724K455	-S72	S5020-250
-S52K	S3124K350	-A59K	A37K455	-B65	BR3724-455	-S72K	S5020K250
-CR52	SS3124-350	-S59	S37-455	-B65K	BR3724K455	-CR72	SS5020-250
-CR52K	SS3124K350	-S59K	S37K455	-A66	A3724-540	-CR72K	SS5020K250
-B52	BR3124-350	-CR59	SS37-455	-A66K	A3724K540	-B72	BR5020-250
-B52K	BR3124K350	-CR59K	SS37K455	-S66	S3724-540	-B72K	BR5020K250
-A53	A3124-425	-B59	BR37-455	-S66K	S3724K540	-A73	A5020-350
-A53K	A3124K425	-B59K	BR37K455	-CR66	SS3724-540	-A73K	A5020K350
-S53	S3124-425	-A60	A37-540	-CR66K	SS3724K540	-S73	S5020-350
-S53K	S3124K425	-A60K	A37K540	-B66	BR3724-540	-S73K	S5020K350
-CR53	SS3124-425	-S60	S37-540	-B66K	BR3724K540	-CR73	SS5020-350
-CR53K	SS3124K425	-S60K	S37K540	-A67	A50-150	-CR73K	SS5020K350
-B53	BR3124-425	-CR60	SS37-540	-A67K	A50K150	-B73	BR5020-350
-B53K	BR3124K425	-CR60K	SS37K540	-S67	S50-150	-B73K	BR5020K350
-A54	A3124-500	-B60	BR37-540	-S67K	S50K150	-A74	A5020-450
-A54K	A3124K500	-B60K	BR37K540	-CR67	SS50-150	-A74K	A5020K450
-S54	S3124-500	-A61	A3724-115	-CR67K	SS50K150	-S74	S5020-450
-S54K	S3124K500	-A61K	A3724K115	-B67	BR50-150	-S74K	S5020K450
-CR54	SS3124-500	-S61	S3724-115	-B67K	BR50K150	-CR74	SS5020-450
-CR54K	SS3124K500	-S61K	S3724K115	-A68	A50-250	-CR74K	SS5020K450
-B54	BR3124-500	-CR61	SS3724-115	-A68K	A50K250	-B74	BR5020-450
-B54K	BR3124K500	-CR61K	SS3724K115	-S68	S50-250	-B74K	BR5020K450
-A55	A37-115	-B61	BR3724-115	-S68K	S50K250		
-A55K	A37K115	-B61K	BR3724K115	-CR68	SS50-250		
-S55	S37-115	-A62	A3724-200	-CR68K	SS50K250		
-S55K	S37K115	-A62K	A3724K200	-B68	BR50-250		
-CR55	SS37-115	-S62	S3724-200	-B68K	BR50K250		

COUNTERSUNK HEAD -- OPEN END

MS27130	BFG	MS27130	BFG	MS27130	BFG	MS27130	BFG
-	Part No.	-	Part No.	-	Part No.	-	Part No.
-A81	A4-81	-A87	A6-106	-A93	A8-106	-A99	A10-116
-A81K	A4K81	-A87K	A6K106	-A93K	A8K106	-A99K	A10K116
-S81	S4-81	-S87	S6-106	-S93	S8-106	-S99	S10-116
-S81K	S4K81	-S87K	S6K106	-S93K	S8K106	-S99K	S10K116
-CR81	SS4-81	-CR87	SS6-106	-CR93	SS8-106	-CR99	SS10-116
-CR81K	SS4K81	-CR87K	SS6K106	-CR93K	SS8K106	-CR99K	SS10K116
-B81	BR4-81	-B87	BR6-106	-B93	BR8-106	-B99	BR10-116
-B81K	BR4K81	-B87K	BR6K106	-B93K	BR8K106	-B99K	BR10K116
-A82	A4-106	-A88	A6-161	-A94	A8-161	-A100	A10-166
-A82K	A4K106	-A88K	A6K161	-A94K	A8K161	-A100K	A10K166
-S82	S4-106	-S88	S6-161	-S94	S8-161	-S100	S10-166
-S82K	S4K106	-S88K	S6K161	-S94K	S8K161	-S100K	S10K166
-CR82	SS4-106	-CR88	SS6-161	-CR94	SS8-161	-CR100	SS10-166
-CR82K	SS4K106	-CR88K	SS6K161	-CR94K	SS8K161	-CR100K	SS10K166
-B82	BR4-106	-B88	BR6-161	-B94	BR8-161	-B100	BR10-166
-B82K	BR4K106	-B88K	BR6K161	-B94K	BR8K161	-B100K	BR10K166
-A83	A4-131	-A89	A6-201	-A95	A8-201	-A101	A10-216
-A83K	A4K131	-A89K	A6K201	-A95K	A8K201	-A101K	A10K216
-S83	S4-131	-S89	S6-201	-S95	S8-201	-S101	S10-216
-S83K	S4K131	-S89K	S6K201	-S95K	S8K201	-S101K	S10K216
-CR83	SS4-131	-CR89	SS6-201	-CR95	SS8-201	-CR101	SS10-216
-CR83K	SS4K131	-CR89K	SS6K201	-CR95K	SS8K201	-CR101K	SS10K216
-B83	BR4-131	-B89	BR6-201	-B95	BR8-201	-B101	BR10-216
-B83K	BR4K131	-B89K	BR6K201	-B95K	BR8K201	-B101K	BR10K216
-A84	A4-156	-A90	A6-241	-A96	A8-241	-A102	A10-266
-A84K	A4K156	-A90K	A6K241	-A96K	A8K241	-A102K	A10K266
-S84	S4-156	-S90	S6-241	-S96	S8-241	-S102	S10-266
-S84K	S4K156	-S90K	S6K241	-S96K	S8K241	-S102K	S10K266
-CR84	SS4-156	-CR90	SS6-241	-CR96	SS8-241	-CR102	SS10-266
-CR84K	SS4K156	-CR90K	SS6K241	-CR96K	SS8K241	-CR102K	SS10K266
-B84	BR4-156	-B90	BR6-241	-B96	BR8-241	-B102	BR10-266
-B84K	BR4K156	-B90K	BR6K241	-B96K	BR8K241	-B102K	BR10K266
-A85	A4-181	-A91	A6-281	-A97	A8-281	-A103	A10-316
-A85K	A4K181	-A91K	A6K281	-A97K	A8K281	-A103K	A10K316
-S85	S4-181	-S91	S6-281	-S97	S8-281	-S103	S10-316
-S85K	S4K181	-S91K	S6K281	-S97K	S8K281	-S103K	S10K316
-CR85	SS4-181	-CR91	SS6-281	-CR97	SS8-281	-CR103	SS10-316
-CR85K	SS4K181	-CR91K	SS6K281	-CR97K	SS8K281	-CR103K	SS10K316
-B85	BR4-181	-B91	BR6-281	-B97	BR8-281	-B103	BR10-316
-B85K	BR4K181	-B91K	BR6K281	-B97K	BR8K281	-B103K	BR10K316
-A86	A4-206	A92	A6-321	-A98	A8-321	-A104	A10-366
-A86K	A4K206	A92K	A6K321	-A98K	A8K321	-A104K	A10K366
-S86	S4-206	S92	S6-321	-S98	S8-321	-S104	S10-366
-S86K	S4K206	S92K	S6K321	-S98K	S8K321	-S104K	S10K366
-CR86	SS4-206	CR92	SS6-321	-CR98	SS8-321	-CR104	SS10-366
-CR86K	SS4K206	CR92K	SS6K321	-CR98K	SS8K321	-CR104K	SS10K366
-B86	BR4-206	B92	BR6-321	-B98	BR8-321	-B104	BR10-366
-B86K	BR4K206	B92K	BR6K321	-B98K	BR8K321	-B104K	BR10K366

COUNTERSUNK HEAD - OPEN END

MS27130	BFG	MS27130	BFG	MS27130	BFG	MS27130	BFG
-	Part No.	-	Part No.	-	Part No.	-	Part No.
-A105	A2528-151	-A111	A3124-181	-A117	A3724-211	-A123	A5020-226
-A105K	A2528K151	-A111K	A3124K181	-A117K	A3724K211	-A123K	A5020K226
-S105	S2528-151	-S111	S3124-181	-S117	S3724-211	-S123	S5020-226
-S105K	S2528K151	-S111K	S3124K181	-S117K	S3724K211	-S123K	S5020K226
-CR105	SS2528-151	-CR111	SS3124-181	-CR117	SS3724-211	-CR123	SS5020-226
-CR105K	SS2528K151	-CR111K	SS3124K181	-CR117K	SS3724K211	-CR123K	SS5020K226
-B105	BR2528-151	-B111	BR3124-181	-B117	BR3724-211	-B123	BR5020-226
-B105K	BR2528K151	-B111K	BR3124K181	-B117K	BR3724K211	-B123K	BR5020K226
-A106	A2528-211	-A112	A3124-256	-A118	A3724-296	-A124	A5020-326
-A106K	A2528K211	-A112K	A3124K256	-A118K	A3724K296	-A124K	A5020K326
-S106	S2528-211	-S112	S3124-256	-S118	S3724-296	-S124	S5020-326
-S106K	S2528K211	-S112K	S3124K256	-S118K	S3724K296	-S124K	S5020K326
-CR106	SS2528-211	-CR112	SS3124-256	-CR118	SS3724-296	-CR124	SS5020-326
-CR106K	SS2528K211	-CR112K	SS3124K256	-CR118K	SS3724K296	-CR124K	SS5020K326
-B106	BR2528-211	-B112	BR3124-256	-B118	BR3724-296	-B124	BR5020-326
-B106K	BR2528K211	-B112K	BR3124K256	-B118K	BR3724K296	-B124K	BR5020K326
-A107	A2528-271	-A113	A3124-331	-A119	A3724-381	-A125	A5020-426
-A107K	A2528K271	-A113K	A3124K331	-A119K	A3724K381	-A125K	A5020K426
-S107	S2528-271	-S113	S3124-331	-S119	S3724-381	-S125	S5020-426
-S107K	S2528K271	-S113K	S3124K331	-S119K	S3724K381	-S125K	S5020K426
-CR107	SS2528-271	-CR113	SS3124-331	-CR119	SS3724-381	-CR125	SS5020-426
-CR107K	SS2528K271	-CR113K	SS3124K331	-CR119K	SS3724K381	-CR125K	SS5020K426
B107	BR2528-271	-B113	BR3124-331	-B119	BR3724-381	-B125	BR5020-426
B107K	BR2528K271	-B113K	BR3124K331	-B119K	BR3724K381	-B125K	BR5020K426
-A108	A2528-331	-A114	A3124-406	-A120	A3724-466	-A126	A5020-526
-A108K	A2528K331	-A114K	A3124K406	-A120K	A3724K466	-A126K	A5020K526
-S108	S2528-331	-S114	S3124-406	-S120	S3724-466	-S126	S5020-526
-S108K	S2528K331	-S114K	S3124K406	-S120K	S3724K466	-S126K	S5020K526
-CR108	SS2528-331	-CR114	SS3124-406	-CR120	SS3724-466	-CR126	SS5020-526
-CR108K	SS2528K331	-CR114K	SS3124K406	-CR120K	SS3724K466	-CR126K	SS5020K526
-B108	BR2528-331	-B114	BR3124-406	-B120	BR3724-466	-B126	BR5020-526
-B108K	BR2528K331	-B114K	BR3124K406	-B120K	BR3724K466	-B126K	BR5020K526
-A109	A2528-391	-A115	A3124-481	-A121	A3724-551	-A127	A1024-116
-A109K	A2528K391	-A115K	A3124K481	-A121K	A3724K551	-A127K	A1024K116
-S109	S2528-391	-S115	S3124-481	-S121	S3724-551	-S127	S1024-116
-S109K	S2528K391	-S115K	S3124K481	-S121K	S3724K551	-S127K	S1024K116
-CR109	SS2528-391	-CR115	SS3124-481	-CR121	SS3724-551	-CR127	SS1024-116
-CR109K	SS2528K391	-CR115K	SS3124K481	-CR121K	SS3724K551	-CR127K	SS1024K116
-B109	BR2528-391	-B115	BR3124-481	-B121	BR3724-551	-B127	BR1024-116
-B109K	BR2528K391	-B115K	BR3124K481	-B121K	BR3724K551	-B127K	BR1024K116
-A110	A2528-451	-A116	A3124-556	-A122	A3724-636	-A128	A1024-166
-A110K	A2528K451	-A116K	A3124K556	-A122K	A3724K636	-A128K	A1024K166
-S110	S2528-451	-S116	S3124-556	-S122	S3724-636	-S128	S1024-166
-S110K	S2528K451	-S116K	S3124K556	-S122K	S3724K636	-S128K	S1024K166
-CR110	SS2528-451	-CR116	SS3124-556	-CR122	SS3724-636	-CR128	SS1024-166
-CR110K	SS2528K451	-CR116K	SS3124K556	-CR122K	SS3724K636	-CR128K	SS1024K166
-B110	BR2528-451	-B116	BR3124-556	-B122	BR3724-636	-B128	BR1024-166
-B110K	BR2528K451	-B116K	BR3124K556	-B122K	BR3724K636	-B128K	BR1024K166

COUNTERSUNK HEAD -- OPEN END

MS27130 -	BFG Part No.	MS27130 -	BFG Part No.	MS27130 -	BFG Part No.	MS27130 -	BFG Part No.
-A129	A1024-216	-A135	A25-271	-A141	A31-331	-A147	A37-381
-A129K	A1024K216	-A135K	A25K271	-A141K	A31K331	-A147K	A37K381
-S129	S1024-216	-S135	S25-271	-S141	S31-331	-S147	S37-381
-S129K	S1024K216	-S135K	S25K271	-S141K	S31K331	-S147K	S37K381
-CR129	SS1024-216	-CR135	SS25-271	-CR141	SS31-331	-CR147	SS37-381
-CR129K	SS1024K216	-CR135K	SS25K271	-CR141K	SS31K331	-CR147K	SS37K381
-B129	BR1024-216	-B135	BR25-271	-B141	BR31-331	-B147	BR37-381
-B129K	BR1024K216	-B135K	BR25K271	-B141K	BR31K331	-B147K	BR37K381
-A130	A1024-266	-A136	A25-331	-A142	A31-406	-A148	A37-466
-A130K	A1024K266	-A136K	A25K331	-A142K	A31K406	-A148K	A37K466
-S130	S1024-266	-S136	S25-331	-S142	S31-406	-S148	S37-466
-S130K	S1024K266	-S136K	S25K331	-S142K	S31K406	-S148K	S37K466
-CR130	SS1024-266	-CR136	SS25-331	-CR142	SS31-406	-CR148	SS37-466
-CR130K	SS1024K266	-CR136K	SS25K331	-CR142K	SS31K406	-CR148K	SS37K466
-B130	BR1024-266	-BR136	BR25-331	-B142	BR31-406	-B148	BR37-466
-B130K	BR1024K266	-BR136K	BR25K331	-B142K	BR31K406	-B148K	BR37K466
-A131	A1024-316	-A137	A25-391	-A143	A31-481	-A149	A37-551
-A131K	A1024K316	-A137K	A25K391	-A143K	A31K481	-A149K	A37K551
-S131	S1024-316	-S137	S25-391	-S143	S31-481	-S149	S37-551
-S131K	S1024K316	-S137K	S25K391	-S143K	S31K481	-S149K	S37K551
-CR131	SS1024-316	-CR137	SS25-391	-CR143	SS31-481	-CR149	SS37-551
-CR131K	SS1024K316	-CR137K	SS25K391	-CR143K	SS31K481	-CR149K	SS37K551
-B131	BR1024-316	-B137	BR25-391	-B143	BR31-481	-B149	BR37-551
-B131K	BR1024K316	-B137K	BR25K391	-B143K	BR31K481	-B149K	BR37K551
-A132	A1024-366	-A138	A25-451	-A144	A31-556	-A150	A37-636
-A132K	A1024K366	-A138K	A25K451	-A144K	A31K556	-A150K	A37K636
-S132	S1024-366	-S138	S25-451	-S144	S31-556	-S150	S37-636
-S132K	S1024K366	-S138K	S25K451	-S144K	S31K556	-S150K	S37K636
-CR132	SS1024-366	-CR138	SS25-451	-CR144	SS31-556	-CR150	SS37-636
-CR132K	SS1024K366	-CR138K	SS25K451	-CR144K	SS31K556	-CR150K	SS37K636
-B132	BR1024-366	-B138	BR25-451	-B144	BR31-556	-B150	BR37-636
-B132K	BR1024K366	-B138K	BR25K451	-B144K	BR31K556	-B150K	BR37K636
-A133	A25-151	-A139	A31-181	-A145	A37-211	-A151	A50-226
-A133K	A25K151	-A139K	A31K181	-A145K	A37K211	-A151K	A50K226
-S133	S25-151	-S139	S31-181	-S145	S37-211	-S151	S50-226
-S133K	S25K151	-S139K	S31K181	-S145K	S37K211	-S151K	S50K226
-CR133	SS25-151	-CR139	SS31-181	-CR145	SS37-211	-CR151	SS50-226
-CR133K	SS25K151	-CR139K	SS31K181	-CR145K	SS37K211	-CR151K	SS50K226
-B133	BR25-151	-B139	BR31-181	-B145	BR37-211	-B151	BR50-226
-B133K	BR25K151	-B139K	BR31K181	-B145K	BR37K211	-B151K	BR50K226
-A134	A25-211	-A140	A31-256	-A146	A37-296	-A152	A50-326
-A134K	A25K211	-A140K	A31K256	-A146K	A37K296	-A152K	A50K326
-S134	S25-211	-S140	S31-256	-S146	S37-296	-S152	S50-326
-S134K	S25K211	-S140K	S31K256	-S146K	S37K296	-S152K	S50K326
-CR134	SS25-211	-CR140	SS31-256	-CR146	SS37-296	-CR152	SS50-326
-CR134K	SS25K211	-CR140K	SS31K256	-CR146K	SS37K296	-CR152K	SS50K326
-B134	BR25-211	-B140	BR31-256	-B146	BR37-296	-B152	BR50-326
-B134K	BR25K211	-B140K	BR31K256	-B146K	BR37K296	-B152K	BR50K326

COUNTERSUNK HEAD -- OPEN END

MS27130	BFG
-	Part No.
-A153	A50-426
-A153K	A50K426
-S153	S50-426
-S153K	S50K426
-CR153	SS50-426
-CR153K	SS50K426
-B153	BR50-426
-B153K	BR50K426
-A154	A50-526
-A154K	A50K526
-S154	S50-526
-S154K	S50K526
-CR154	SS50-526
-CR154K	SS50K526
-B154	BR50-526
-B154K	BR50K526