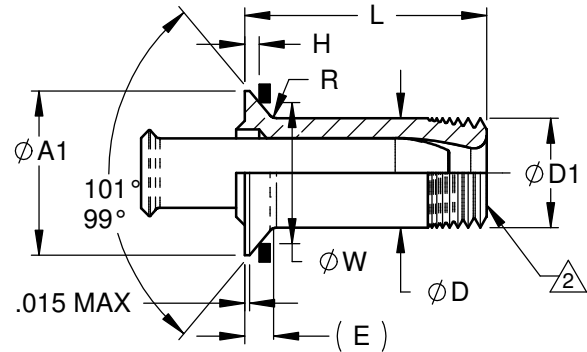


PROTRUDING HEAD



FLUSH HEAD

PART NUMBER CALLOUT

695 () () - () - () () ()

NOTES UNLESS SPECIFIED OTHERWISE:

1. LONGER GRIP LENGTHS OFFERED, CONTACT FACTORY FOR AVAILABILITY. ADD .0625 TO "L" DIMENSION FOR EACH ADDITIONAL LENGTH CODE INCREMENT NOT SHOWN ON TABLE.

2. BLUE COLOR DYE ON SLEEVE FOR STANDARD DIAMETERS ONLY (P).

CODE	RIVET TYPE
NONE	STANDARD PIN
SP	SHORT PIN

LENGTH CODE	NOM. GRIP	LENGTH = L ± 0.10									
		04	05	06	08	10	12	14	16		
2	.125	.148	.159	.171							
3	.188	.211	.222	.233	.252						
4	.250	.273	.284	.295	.315	.329					
5	.312	.335	.346	.357	.379	.391					
6	.375	.398	.409	.420	.437	.453	.468				
7	.437	.460	.471	.482	.500	.516	.530	.530			
8	.500	.523	.534	.545	.562	.578	.593	.593	.619		
9	.562	.585	.596	.607	.625	.641	.656	.655	.681		
10	.625	.648	.659	.670	.687	.703	.718	.718	.744		
11	.687			.732	.749	.766	.780	.780	.806		
12	.750			.795	.812	.828	.843	.843	.869		
13	.812			.857	.877	.891	.905	.905	.931		
14	.875			.920	.940	.953	.968	.968	.994		
15	.937			.982	1.000	1.016	1.030	1.030	1.056		
16	1.000			1.045	1.062	1.078	1.093	1.093	1.119		

SERIES

DIAMETER CODE	NOM. Ø	Ø D & Ø D1 STANDARD	Ø D CLOSE TOL. +.0000 -0.0005	Ø D1 CLOSE TOL. +.000 -0.003	Ø A ±0.10	Ø A 1 MAX SHARP	GAGE BLOCK		R	(E)	J ±0.10
							Ø W	H			
04	.125	.124-.126	N/A	N/A	.219	.194	N/A	N/A	.005-.020	.042	.040
05	.156	.155-.157	N/A	N/A	.250	.250	N/A	N/A	.010-.020	.047	.043
06	.187	.189-.192	.1900	.1895	.312	.305	.2439-.2441	.0210-.0250		.050	.045
08	.250	.257-.260	.2580	.258	.406	.399	.3313-.3315	.0232-.0278	.010-.025	.059	.058
10	.312	.313-.316	.3140	.314	.500	.479	.4045-.4047	.0255-.0305		.075	.064
12	.375	.383-.386	.3840	.384	.594	.566	.4852-.4854	.0277-.0333		.083	.075
14	.437	N/A	.4365	.436	.671	.674	.5695-.5697	.0370-.0430	.010-.030	.100	.090
16	.500	N/A	.4991	.499	.774	.768	.6497-.6499	.0392-.0458		.100	.105

CODE	SIZE
NONE	STANDARD DIAMETER
C	CLOSE TOLERANCE SLEEVE

MATERIAL CODE	SLEEVE MATERIAL
H	17-4 CRES
S	303 Se CRES

MATERIAL

PIN: 431 CRES PER AMS 5628; 110,000 PSI MIN. SHEAR PER MIL-H-6875.

SLEEVE:

695() () -H: 17-4 PH CRES PER AMS 5643
695() () -S: 303Se CRES PER AMS 5640, 5641, ASTM-A 484-482, EXCEPT TENSILE OF 105-120 KSI FOR ALL SPECIFICATION VARIABLES

FINISH

695() () : PIN & SLEEVE: CAD PLATE PER AMS QQ-P-416, TYPE I, CLASS 3 AND ELECTRO-FILM (BLACK) PER AS5272
695() () F: PIN & SLEEVE: CAD PLATE PER AMS QQ-P-416, TYPE I, CLASS 3 AND DRY LUBE SLEEVE ONLY PER AS5272
695() () P: PIN & SLEEVE: ELECTRO-FILM (BLACK) PER AS5272

HEAD TYPE CODE	TYPE
0	FLUSH HEAD
1	PROTRUDING HEAD

FINISH CODE	FINISH
NONE	CAD PLATE, DRY LUBE
F	CAD PLATE, DRY LUBE SLEEVE ONLY
P	DRY LUBE, NO CAD PLATE

Y PER DCN 13120, CHANGED FORMAT, FINISH SPECS

TOLERANCE UNLESS OTHERWISE NOTED:
.X = ±.05
.XX = ±.02
.XXX = ±.015
ANGLES ±0.5°

DRAWN BY: J. SCHLOBOHM
CHECKED BY: SIGNATURE ON FILE

ISSUED 10/6/2005
REVISED 6/19/2015
PAGE 1 OF 1

**DRIVE-PIN BLIND RIVET,
PROTRUDING & FLUSH HEAD**

DIMENSIONS IN INCHES

**6950/6951
S-0063**

THIS DRAWING, THE STRUCTURAL DESIGN DISCLOSED THEREIN AND THE TECHNICAL DATA AND ENGINEERING SERVICE REPRESENTED THEREBY ARE THE EXCLUSIVE PROPERTY OF HUCK INTERNATIONAL, INC.