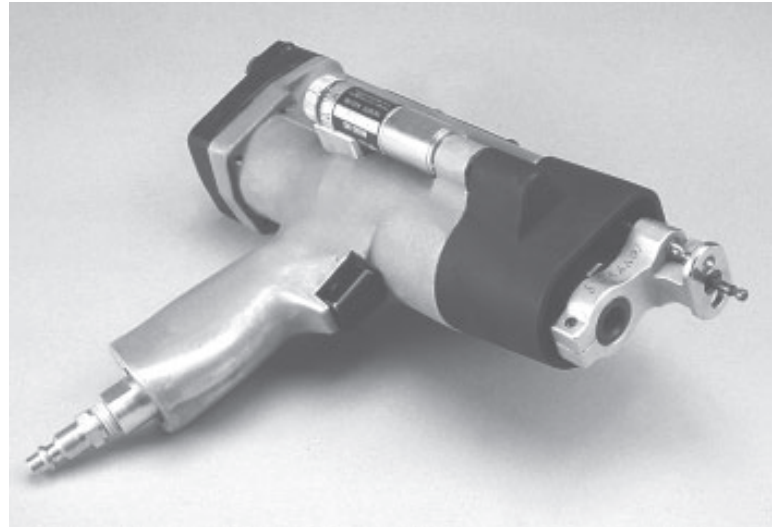


SPACEMATIC

ULTRALITE™ DRILLING MACHINES

Nutplate Drillmotor II/IIB



One hand operation to locate, drill and countersink both rivet holes in a single 4 second operation. Tool is easily converted from one rivet hole spacing to another by interchanging the foot attachments and spindle spacer block.

Standard Features

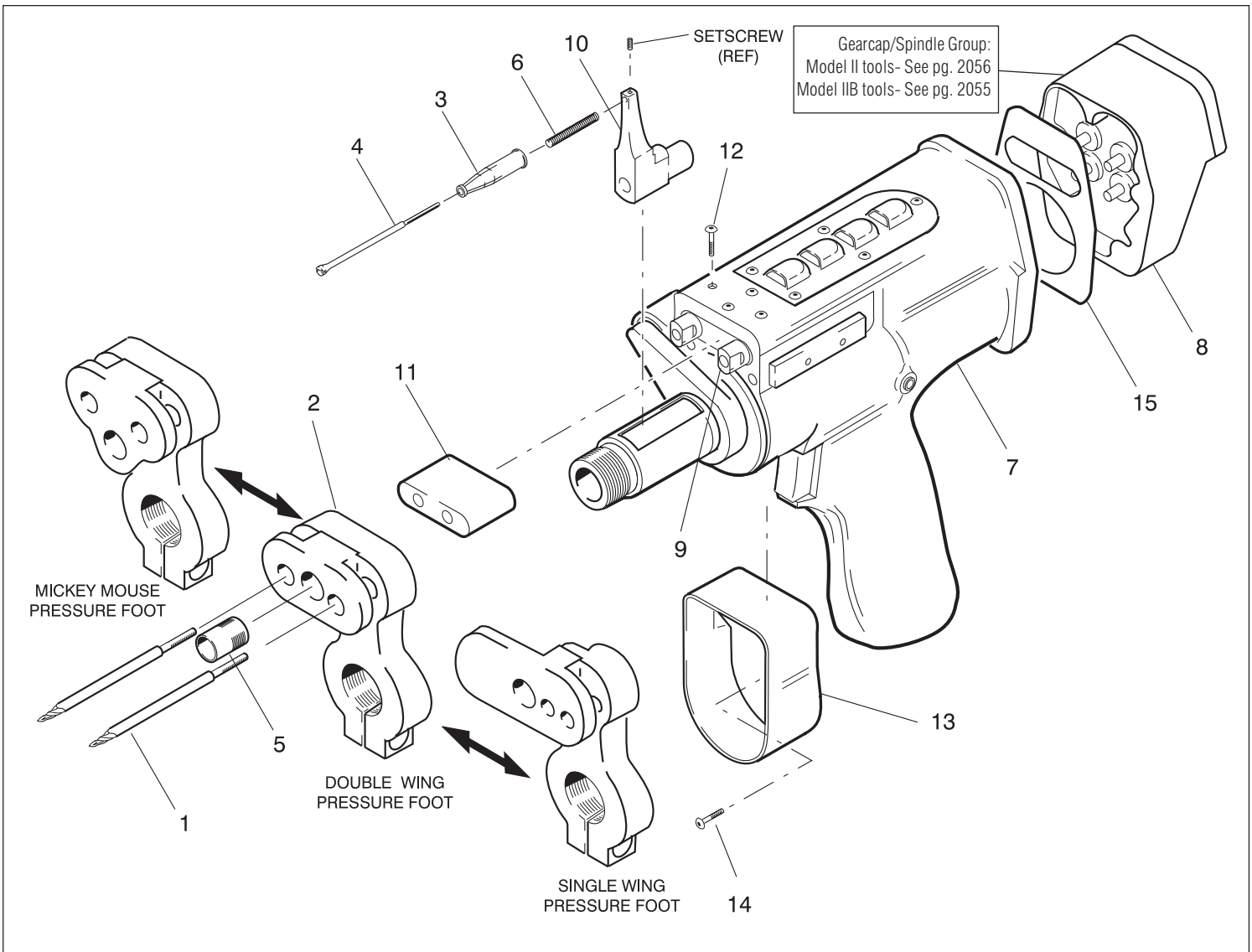
- ergonomic design
- fully adjustable feed rate
- standard foot assembly, collet-mandrel and cutters from previous model
- 3 lbs. lighter than previous model
- accommodates all nutplate spindle spacings from .219 to 1.125 inches
- popular metric spacings available on special request

Optional Features

- c-yoke foot attachment for edge applications
- booster pump to increase clamp and thrust forces for drilling in tough materials
- coolant-lubricant system for improved cycle time and increased drill life
- forward, rearward, right or left exhaust direction

Specifications

Drill stroke length: 0.500 inches
Available spindle speeds: 600 and 7,000 RPM
Feed rate range: 0.001 to 0.012 inches per rev.
Motor power: 0.54 HP
Maximum air consumption: 18 CFM at 90 PSI
Collet stroke length: 0.250 inch
Weight: 4.75 lbs.

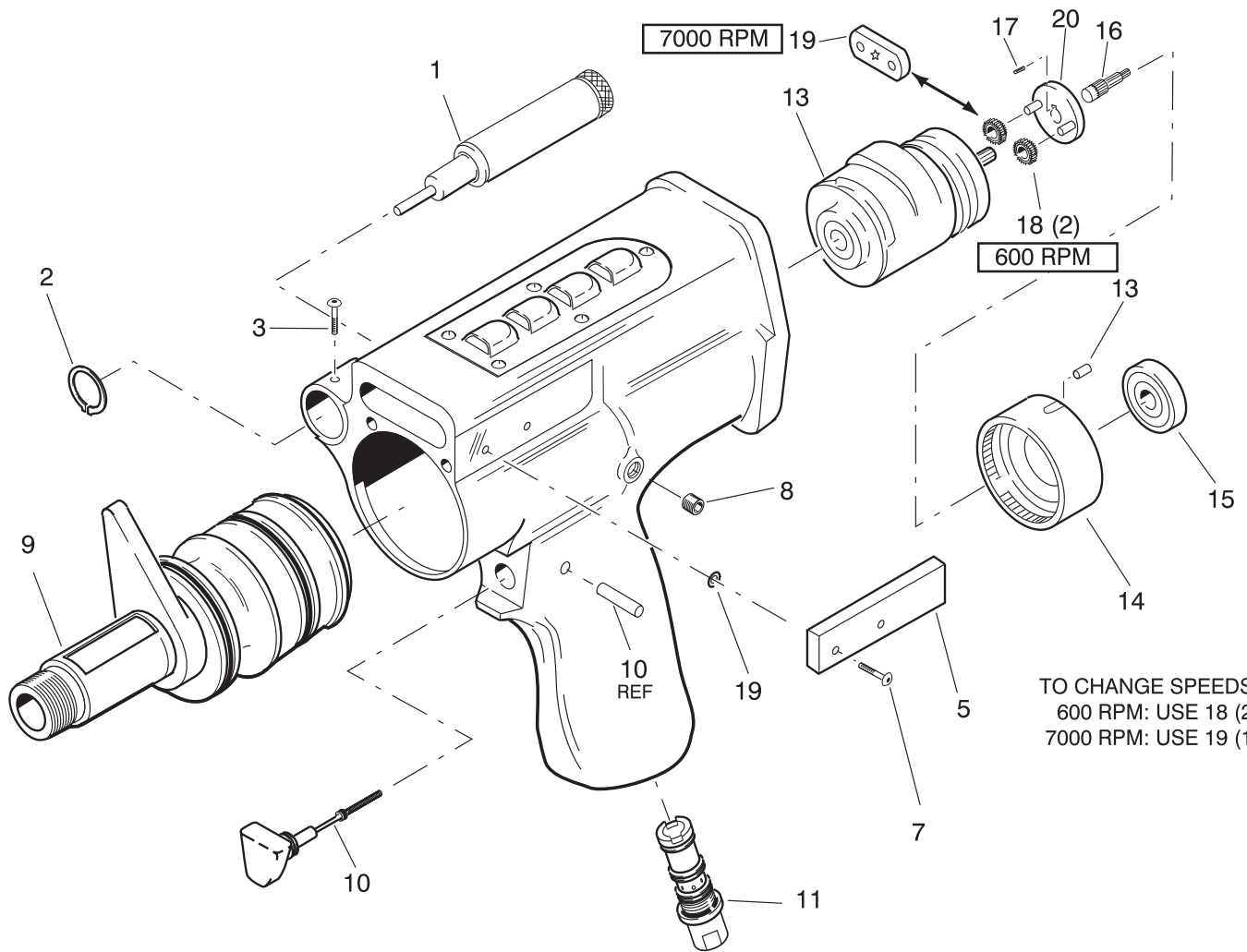


NUTPLATE DRILLMOTOR - MASTER ASSY

Item	Part No.	Description	Qty.	Item	Part No.	Description	Qty.
1	Series WD WDS- note 1	Cutter	2	8	8001309- note 2	Gear cap group (.688)	1
2	Series 5420490- note 2	Pressure foot DW	1		8001310- note 2	Gear cap group (1.00)	1
	Series 5420489- note 2	Pressure foot MM	1	9	8001303	Spindle assy. (5/16 front)	2
	Series 5420477- note 2	Pressure foot SW	1		8001305	Spindle assy. (1/4 front)	2
3	note 2	Collet, clamp	1		8001307	Spindle assy. (3/16 front)	2
4	note 2	Mandrel, clamp	1	10	Series 10157- note 2	Finger, collet clamp	1
5	note 2	Bushing, collet	1	11	See Note 2	Spacer block	1
6	note 2	Spring, collet	1	12	16238	Screw, but. hd (6-32 x 3/8)	2
7	8000432- notes 2, 3	Basic hsg assy. (.688, 7000)	1	13	8000512- note 4	Skirt, protector, mach.	1
	8000433- notes 2, 3	Basic hsg assy. (1.00, 7000)	1	14	17488	Screw, soc head (#8-32 x 1/2)	2
	8000459- notes 2, 3	Basic hsg assy. (.688, 600)	1	15	8000651	Gasket, gear cap	1
	8000460- notes 2, 3	Basic hsg assy. (1.00, 600)	1				

NOTES:

- 1 See Cutter Selection and Application chart 5415260 in Maint. Manual.
- 2 See Master Assy. charts in Maint. Manual.
- 3 To change speed, replace spindle insert 6000463 (7000 RPM) with qty. 2 planetary gear assys 6000469 (600 RPM).
- 4 8000512 for all foot assemblies except for DW748 through DW1000; SW203; SW218; SW250; SW335 and SW344--use 8001316. For SW500 use 8001365. For SW468 use 8001440.

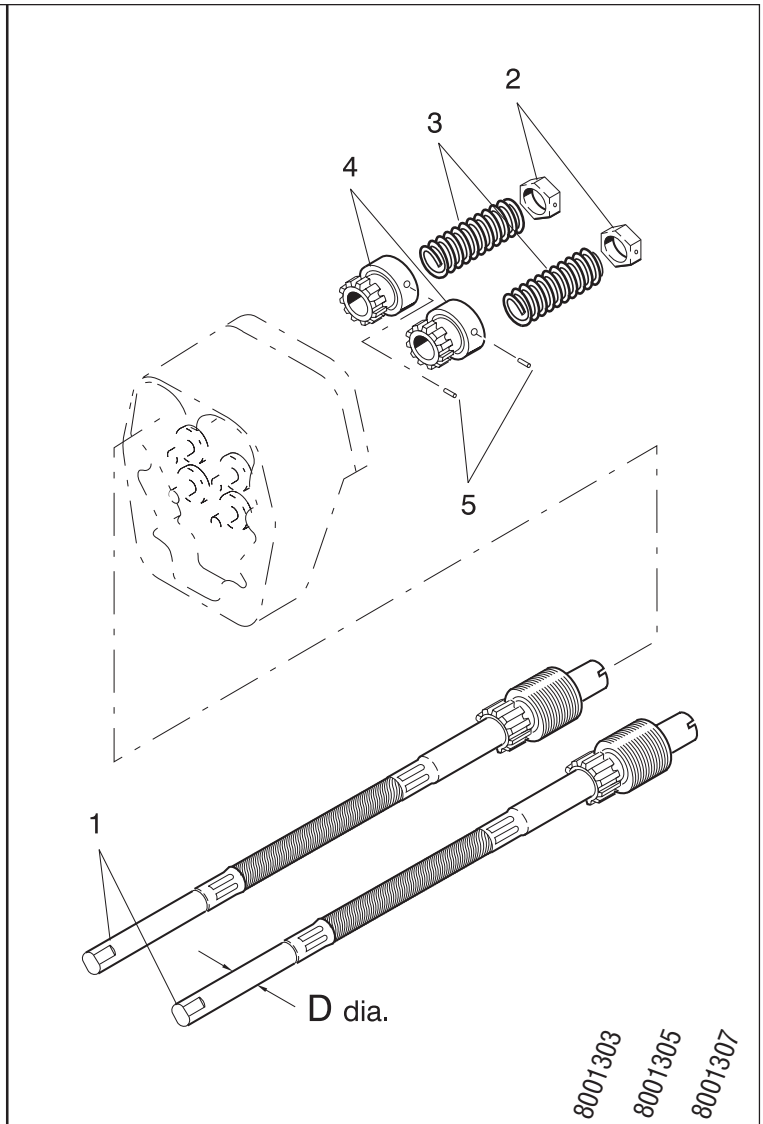
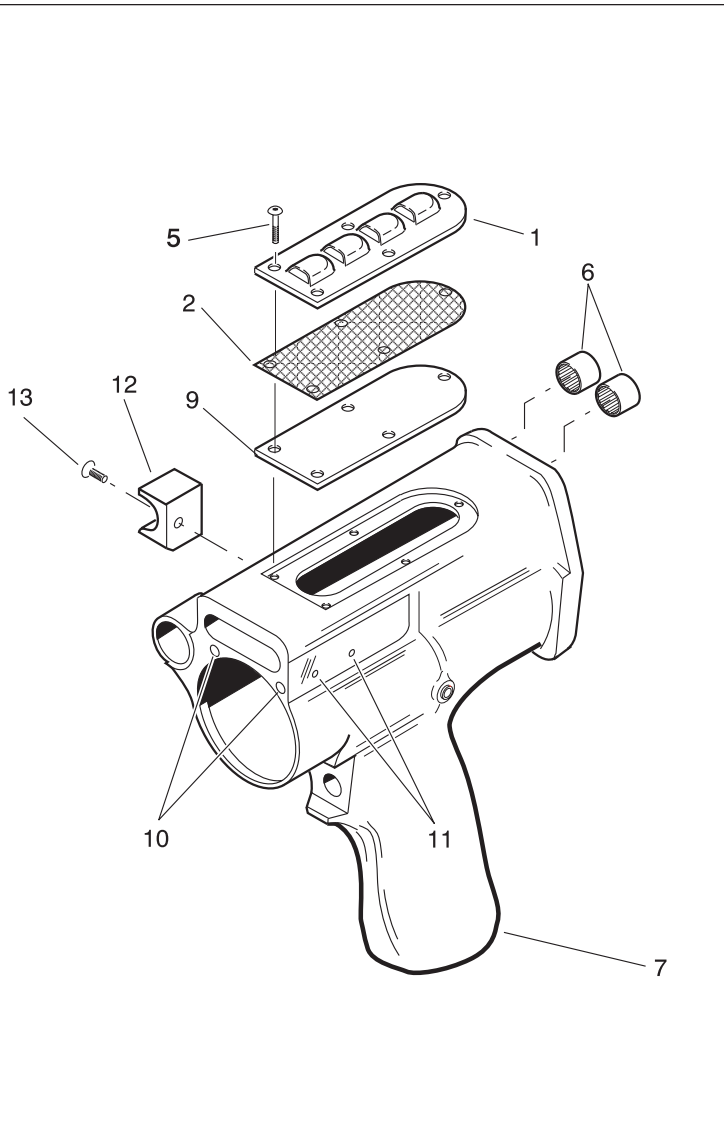


BASIC HOUSING ASSY

ITEM	PART NUMBER	DESCRIPTION	SERIES	SERIES	ITEM	PART NUMBER	DESCRIPTION	SERIES	SERIES
			8000480 600 RPM	8000486 7000 RPM				8000480 600 RPM	8000486 7000 RPM
1	8000461	Kinecheck II	1	1	11	8000446	Main air valve assy.	1	1
2	1441	Ring, retaining (5100-50)	1	1	12	8000434	Air motor, offset vains, assy.	1	1
3	8000462	Screw, set, nylon(10-32 x 1/4)	1	1	13	16178	Pin, dowel (1/8 x 1/4 lg)	1	1
4	note	Housing Sub-assy.	1	1	14	8000466	Planetary adaptor, assy.	1	1
5	5425657	Plate, by-pass, pump assy.	1	1	15	1155	Bearing, ball	1	1
6	566	Seal, O-ring (2-008)	2	2	16	5425797	Gear, pinion, output	1	1
7	16840	Screw, btn schd(6-32 x 7/16)	2	2	17	J-1302	Key, woodruff	1	1
8	16189	Plug, pipe soc (1/8 MP)	1	1	18	8000469	Gear, planetary, assy.	2	—
9	8000451	Clamp and feed group	1	1	19	8000463	Insert, spindle	—	1
10	8000441	Trigger valve assy.	1	1	20	8000464	Cage, assy., gear, planetary	1	1

NOTE:

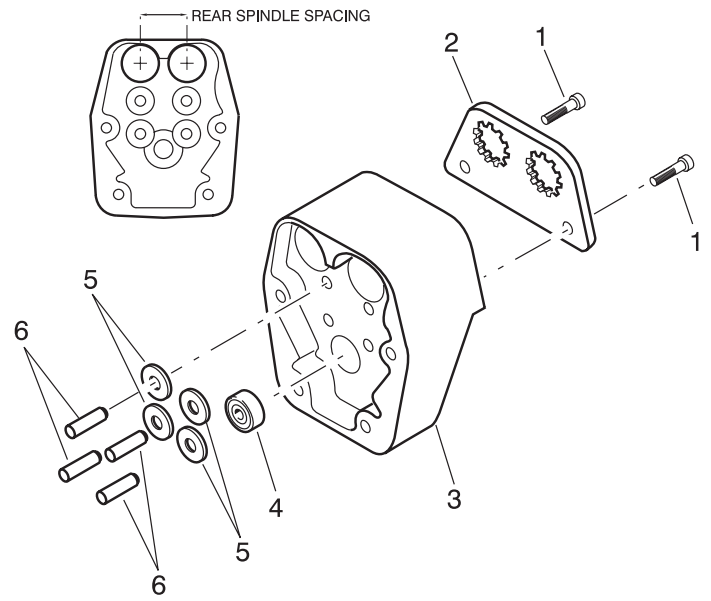
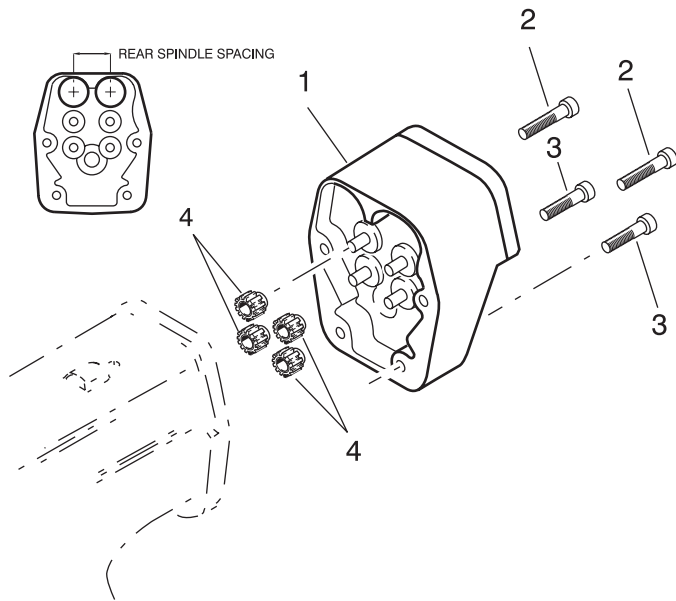
	Basic Housing Assy.	Description	Housing Sub-assy.
SERIES 8000480 (600 RPM):	8000459	0.688 Rear	8000472
	8000460	1.00 Rear	8000473
	8000817	DW 1.125	8000814
SERIES 8000486 (7000 RPM):	8000432	0.688 Rear	8000472
	8000433	1.00 Rear	8000473
	8000813	DW 1.125	8000813



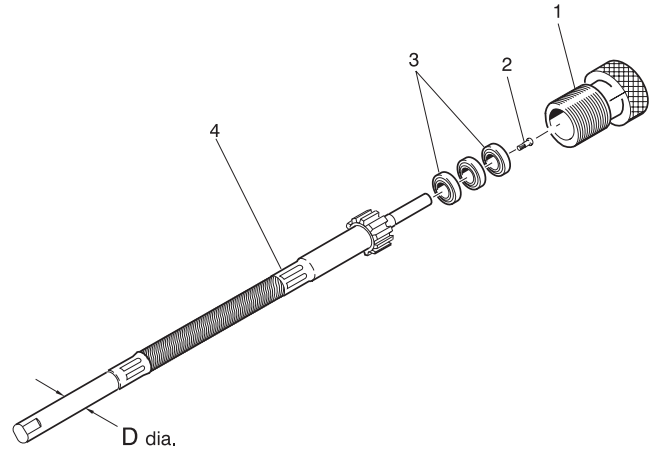
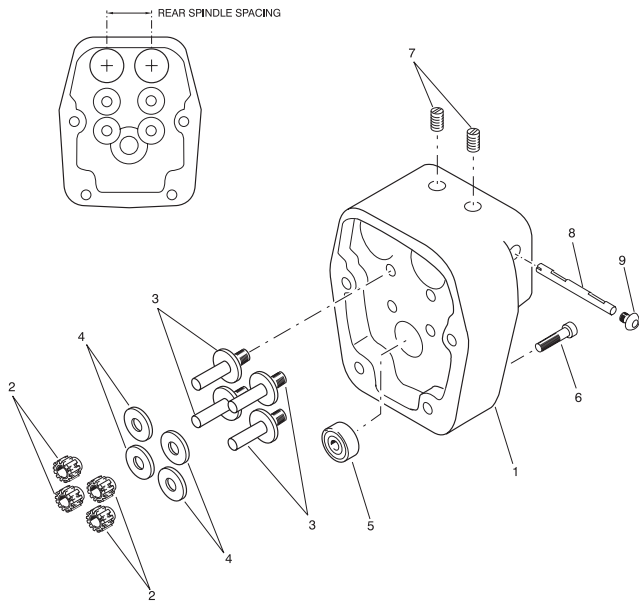
HOUSING SUB-ASSY				SPINDLE ASSY				D dia:		
ITEM	PART NUMBER	DESCRIPTION	QTY	ITEM	PART NUMBER	DESCRIPTION	QTY	QTY	QTY	
			8000471				5/16	1/4	3/16	
1	8000475	Cover (Standard)*	1	1	16202	Pin, roll	1	1	1	
2	8000476	Muffler	1	2	1011649	Collar, ret, spring (7/16 hex)	1	1	1	
3	1175257	Plug, lee (0.281)	2	3	1013105	Spring, compression	1	1	1	
4	1258084	Plug, lee (0.187)	5	4	1011625	Thimble, adjust (.600 O.D.)	1	1	1	
5	6352	Screw (6-32 x 1/4) (Standard)**	5	5	8001304	Spindle assy.	1	-	-	
6	5426017	Bearing, needle	2	5	8001306	Spindle assy.	-	1	-	
7	8000479	Housing, .688 rear	1	5	8001308	Spindle assy.	-	-	1	
	8000473	Housing, 1.00 rear								
	8000814	Housing, DW 1125								
8	1175129	Plug, lee (0.125)	1							
9	8000513	Screen	1							
10	5430379	Tap-Lok insert	2							
11	1281872	Tap-Lok insert	2							
12	8000895	Bracket, Kinechek	1							
13	8000896	Screw, nylon modified	1							

* Optional covers available: 8000562- Backward exhaust, 8001172- Side exhaust, 8001173- Right hand exhaust; 8001174- Left hand exhaust

** Use screws 16085 for optional covers 8001172, 8001173, and 8001174.



GEARS & GEAR CAP GROUP-MODEL IIB					GEAR CAP ASSEMBLY-MODEL IIB				
REAR SPINDLE SPACING			.688	1.000	REAR SPINDLE SPACING			.688	1.000
REAR SPINDLE SPACING			8001309	8001310	REAR SPINDLE SPACING			5445802	5445826
ITEM	PART NO.	DESCRIPTION	QTY	QTY	ITEM	PART NO.	DESCRIPTION	QTY	QTY
1	5445802	Cap assy., gear	1	-	1	16169	Screw, btn hd (8-32 x 1/2)	2	2
	5445826	Cap assy., gear	-	1	2	5445991	Plate, lock, index	1	-
2	16243	Screw, soc head (10-32 x 1 1/8)	2	2		5445978	Plate, lock, index	-	1
3	11611	Screw, soc head (10-32 x 1)	2	2	3	5445796	Cap, gear, machined (.688)	1	-
4	1011807	Gear assy., idler	4	4		5445814	Cap, gear, machined (1.000)	-	1
					4	1172116	Bearing, ball	1	1
					5	1013233	Washer, gear, idle	4	4
					6	1027207	Pin, gear idler	4	4

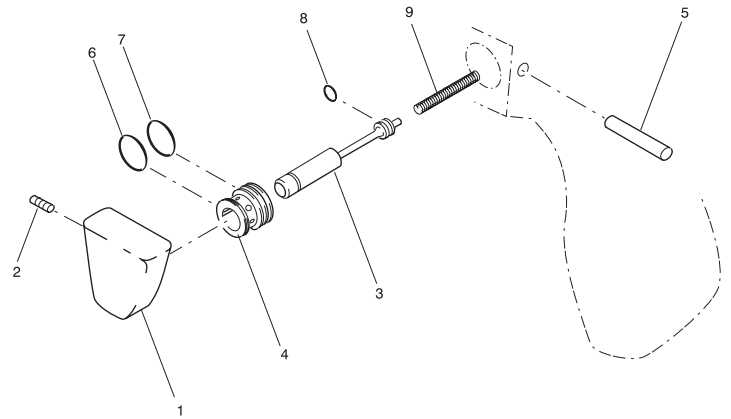
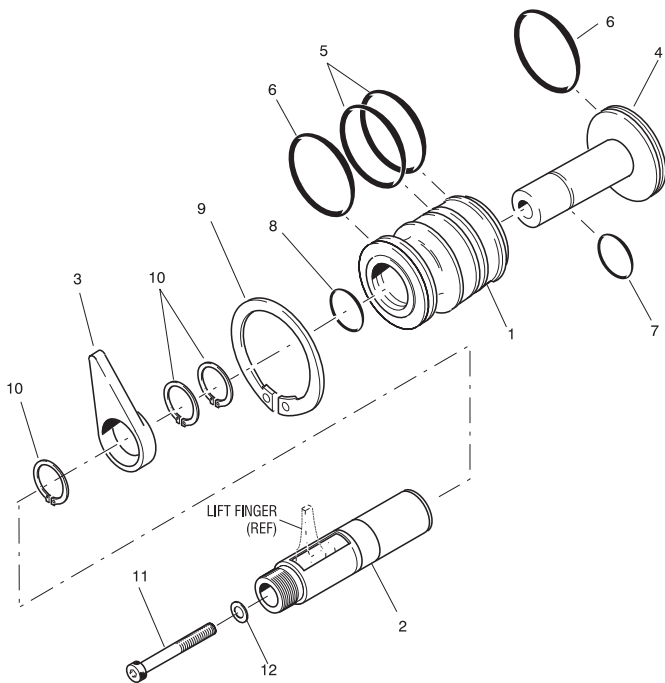


GEARS AND GEAR CAP GROUP-MODEL II	.688	1.000
REAR SPINDLE SPACING	8000487	8000488

SPINDLE ASSEMBLY - MODEL II	5/16	1/4	3/16
	8000491	8000496	8000501

ITEM	PART NO.	DESCRIPTION	QTY	QTY
1	8000481	Cap, gear machined (.688)	1	-
	8000618	Cap, gear machined (1.00)	-	1
2	1011807	Gear assy., idler	4	4
3	1027207	Pin, gear idler	4	4
4	1013233	Washer, gear, idle	4	4
5	1172116	Bearing, ball	1	1
6	J-235	Screw, cap (10-32 x 3/4)	4	4
7	16294	Screw, set, (10-32 x 1/4)	2	2
8	8000796	Insert	1	-
	8001236	Insert	-	1
9	17316	Scew, btn head (8-32 x 1/8)	1	1

ITEM	PART NO.	DESCRIPTION	QTY	QTY	QTY
1	8000504	Housing, bearing	1	1	1
2	7002407	Screw, btn head	1	1	1
3	1172116	Bearing, ball	1	1	1
4	8000492	Spindle assy.	1	-	-
4	8000497	Spindle assy.	-	1	-
4	8000502	Spindle assy.	-	-	1



CLAMP AND FEED GROUP

8000451

TRIGGER ASSY.

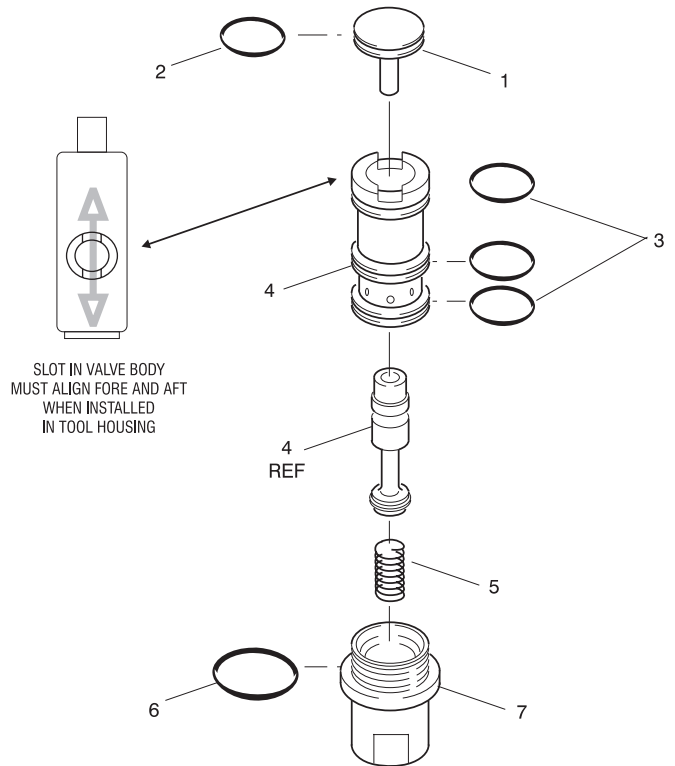
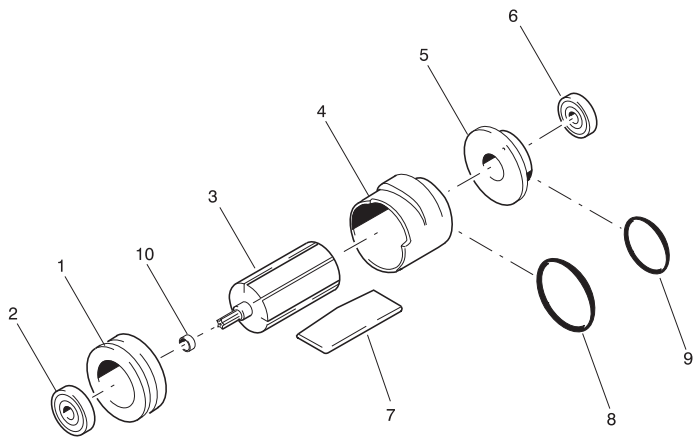
8000441

ITEM	PART NO.	DESCRIPTION	QTY	ITEM	PART NO.	DESCRIPTION	QTY
1	8000452	Bulkhead assy.	1	1	8000442	Trigger, machined	1
2	8000456	Rod, piston, feed	1	2	16119	Screw, set (4-40 x 3/16" lg.)	1
3	8000455	Bracket, feed control	1	3	8000444	Pin, trigger	1
4	8000457	Rod-piston assy.	1	4	8000445	Sleeve, trigger	1
5	8001016	Seal, O-ring (Parker 2-031)	2	5	16180	Pin, roll (1/16 x 3/4")	1
6	3002	Seal, O-ring (Parker 2-222)	1	6	1786	Seal, O-ring (Parker 2-010)	1
7	922	Seal, O-ring (Parker 2-112)	1	7	1506	Seal, O-ring (Parker 2-009)	1
8	150	Seal, O-ring (Parker 2-212)	1	8	564	Seal, O-ring (Parker 2-006)	1
9	16028	Ring, retaining (5000-193)	1	9	1011856	Spring, compression	1
10	8001019	Ring, retaining (5100-87)	3				
11	16060	Screw, cap, sc. head (10-32 x 1 1/2)	1				
12	2781	Washer, lock, int. (10)	1				

**CLAMP AND FEED GROUP
TRIGGER ASSY.**



2057 rev —



AIR MOTOR

8000434

MAIN AIR VALVE ASSY.

8000446

ITEM	PART NO.	DESCRIPTION	QTY
1	8000436	Plate, front	1
2	1172153	Bearing	1
3	8000435	Rotor, air motor	1
4	8000437	Barrel, air motor	1
5	8000438	Plate, rear	1
6	1172128	Bearing	1
7	8000439	Vane	5
8	9554	Seal, O-ring (Parker 2-209)	1
9	1653	Seal, O-ring (Parker 2-214)	1
10	8000444	Spacer	1

ITEM	PART NO.	DESCRIPTION	QTY
1	1013385	Piston	1
2	548	Seal, O-ring (Parker 2-111)	1
3	922	Seal, O-ring (Parker 2-112)	3
4	8000447	Valve assy.	1
5	5447355	Spring	1
6	1139	Seal, O-ring (Parker 2-113)	1
7	8000450	Adapter, inlet	1