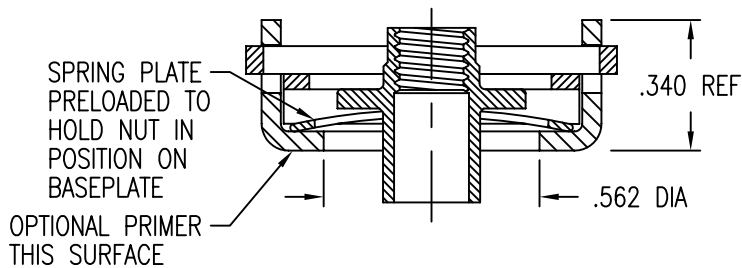


NUTPLATE ATTACHED BY ADHESIVE APPLIED TO THIS SURFACE.

DISPOSABLE ELASTIC FIXTURE HOLDS NUTPLATE WHILE ADHESIVE CURES.

THREAD LOCK BY ELLIPTICAL DEFORMATION PER NASM25027.

NUT MAY BE REMOVED FROM RETAINER AND REPLACED.



NUTPLATE MEETS THE STRENGTH REQUIREMENTS OF NAS1803.

TENSILE STRENGTH OF NUT ASSEMBLY IS 700 LBS MIN.

NUT ELEMENT TENSILE STRENGTH PER NASM25027.

TORQUE OUT REQUIREMENTS OF NASM25027 ARE NOT APPLICABLE.

MATERIAL AND FINISH DATA

| CODE | BASEPLATE AND RETAINER MATERIAL | SPEC. | HEAT TREAT | PASSIVATE |
|------|---------------------------------|----------|-------------|-------------|
| CR | A-286 CRES | AMS 5525 | 130 KSI MIN | AMS-QQ-P-35 |

NUT - A-286 CRES PER AMS 5731, 5732 OR 5737. PASSIVATE PER AMS-QQ-P-35. DRI-FILM LUBE PER MIL-PRF-46010.

CLIP - 302 OR 18-2MN CRES PER AMS 5688 OR ARMCO SPEC. PASSIVATE PER AMS-QQ-P-35.

SPRING - 301 OR 17-7 PH CRES. PASSIVATE PER AMS-QQ-P-35.

OPTIONAL BASEPLATE PRIMER

| CODE | PRIMER | SPEC. |
|------|--------------|---------------|
| P | EPOXY PRIMER | MIL-PRF-85582 |

EXAMPLE PART NUMBER

CB9595 CR 3 CR 135 P

OPTIONAL PRIMER ON BASEPLATE
NOMINAL STRUCTURE THICKNESS S - .135
NUT MATERIAL - A-286 CRES
THREAD T SIZE - .1900-32 UNJF-3B
BASEPLATE MATERIAL - A-286 CRES
BASIC PART NUMBER

UNLESS OTHERWISE SPECIFIED, ALL DIMENSIONS ARE IN INCHES AND TOLERANCES ARE AS SHOWN BELOW. DIMENSIONAL TOLERANCES AND SYMBOLS PER ANSI Y14.5M-1982.

PROPRIETARY PARTS SHOWN IN THIS DRAWING ARE THE SUBJECT OF ISSUED UNITED STATES AND FOREIGN PATENTS AND PATENTS PENDING. UNAUTHORIZED REPRODUCTION AND/OR DISTRIBUTION OF THIS DRAWING IS SPECIFICALLY PROHIBITED.

GLICK BOND

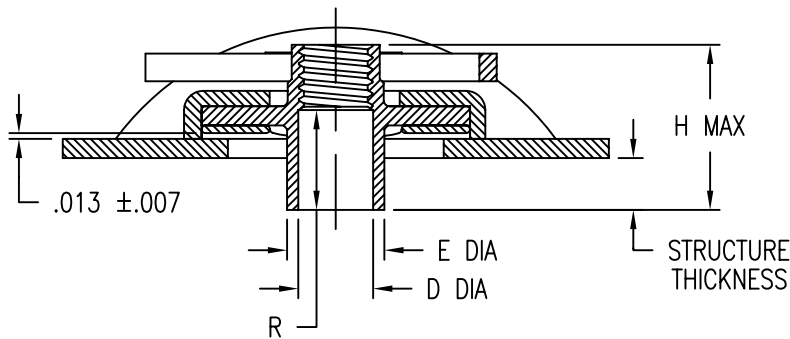
CARSON CITY
NEVADA 89706

CAD CB9595-1

| APPROVALS | DATE |
|-------------------------|---------|
| DRAWN PMM | 27APR05 |
| CHECKED <i>JOC/mtm</i> | 27APR05 |
| RELEASED <i>JBC/ati</i> | 27APR05 |
| REVISED PMM | 27APR05 |

| TITLE | | | |
|--------------------------|-----------|----------|---------|
| NUTPLATE, EXTENDED FLOAT | | | |
| SIZE | CAGE CODE | DWG. NO. | REV. |
| A | 66530 | CB9595 | 2 |
| SCALE | 2/1 | | 27APR05 |
| SHEET 1 OF 2 | | | |

DIMENSIONS WITH SPRING PLATE LOADED TO 25 ±3 LBS.



THREAD AND DIMENSION DATA (ALL DIMENSIONS BEFORE PAINT)

| CODE | THREAD T SIZE | RADIAL FLOAT F MIN | D $\begin{smallmatrix} +.005 \\ -.000 \end{smallmatrix}$ | E $\begin{smallmatrix} +.005 \\ -.000 \end{smallmatrix}$ | FOR STRUCTURE THICKNESS $\begin{smallmatrix} +.004 \\ -.005 \end{smallmatrix}$ | R $\pm .005$ | H MAX |
|------|------------------|-----------------------|--|--|---|--------------|-------|
| 035 | .1900-32 UNJF-3B | .15 | .195 | .250 | .035 | .173 | .313 |
| 045 | | | | | .045 | .183 | .323 |
| 055 | | | | | .055 | .193 | .333 |
| 065 | | | | | .065 | .203 | .343 |
| 075 | | | | | .075 | .213 | .353 |
| 085 | | | | | .085 | .223 | .363 |
| 095 | | | | | .095 | .233 | .373 |
| 105 | | | | | .105 | .243 | .383 |
| 115 | | | | | .115 | .253 | .393 |
| 125 | | | | | .125 | .263 | .403 |
| 135 | | | | | .135 | .273 | .413 |
| 035 | .2500-28 UNJF-3B | .10 | .265 | .340 | .035 | .173 | .313 |
| 045 | | | | | .045 | .183 | .323 |
| 055 | | | | | .055 | .193 | .333 |
| 065 | | | | | .065 | .203 | .343 |
| 075 | | | | | .075 | .213 | .353 |
| 085 | | | | | .085 | .223 | .363 |
| 095 | | | | | .095 | .233 | .373 |
| 105 | | | | | .105 | .243 | .383 |
| 115 | | | | | .115 | .253 | .393 |
| 125 | | | | | .125 | .263 | .403 |
| 135 | | | | | .135 | .273 | .413 |
| 145 | .145 | .283 | .423 | | | | |
| 155 | .155 | .293 | .433 | | | | |

UNLESS OTHERWISE SPECIFIED, ALL DIMENSIONS ARE IN INCHES AND TOLERANCES ARE AS SHOWN BELOW. DIMENSIONAL TOLERANCES AND SYMBOLS PER ANSI Y14.5M-1982.

PROPRIETARY PARTS SHOWN IN THIS DRAWING ARE THE SUBJECT OF ISSUED UNITED STATES AND FOREIGN PATENTS AND PATENTS PENDING. UNAUTHORIZED REPRODUCTION AND/OR DISTRIBUTION OF THIS DRAWING IS SPECIFICALLY PROHIBITED.

GLICK BOND

CARSON CITY
NEVADA 89706

CAD CB9595-2

| APPROVALS | DATE |
|--------------------------|---------|
| DRAWN PMM | 27APR05 |
| CHECKED <i>DOC/John</i> | 27APR05 |
| RELEASED <i>ABC/John</i> | 27APR05 |
| REVISED PMM | 27APR05 |

| TITLE | | | |
|--------------------------|-----------|----------|--------------|
| NUTPLATE, EXTENDED FLOAT | | | |
| SIZE | CAGE CODE | DWG. NO. | REV. |
| A | 66530 | CB9595 | 2 |
| SCALE | 27APR05 | | SHEET 2 OF 2 |
| 2/1 | | | |