

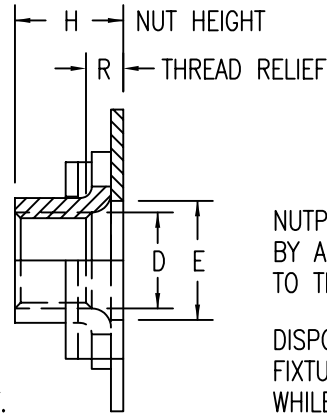
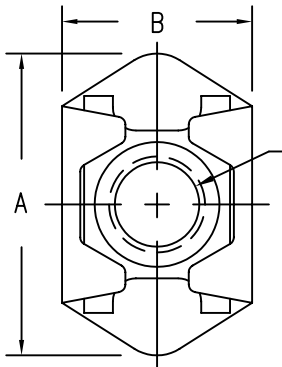
NUTPLATE MEETS THE STRENGTH REQUIREMENTS OF MIL-N-25027.

THREAD LOCK PER MIL-N-25027.
DRI-FILM LUBE ON NUT PER MIL-L-46010 TYPE 1.

THREAD PER MIL-S-8879.

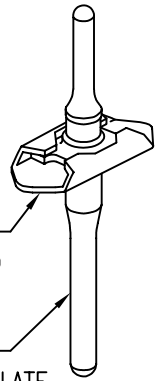
RADIAL FLOAT OF NUT ELEMENT .020 MIN FROM CENTER.
NUT CAN ENGAGE SCREW FROM MAX MISALIGNED POSITION.

NOTE: ALL DIMENSIONS BEFORE PAINT.



NUTPLATE ATTACHED BY ADHESIVE APPLIED TO THIS SURFACE.

DISPOSABLE ELASTIC FIXTURE HOLDS NUTPLATE WHILE ADHESIVE CURES.



THREAD AND DIMENSION DATA

CODE	THREAD SIZE	A MAX	B MAX	D MIN	E MIN	H MAX	R MIN	AXIAL TENSILE STRENGTH lbs. MIN
3-1	.1900-32 UNJF-3B	.739	.416	.194	.230	.250	.062	2460
3-2						.312	.125	
3-3						.375	.188	
3-4						.438	.250	
3-5						.500	.312	
3-6						.562	.375	
4-1	.2500-28 UNJF-3B	.801	.500	.254	.290	.281	.062	4580
4-2						.349	.125	
4-3						.411	.188	
4-4						.474	.250	
4-5						.543	.312	
4-6						.594	.375	

MATERIAL AND FINISH DATA

CODE	BASEPLATE MATERIAL	SPEC.	FINISH	SPEC.
CR	A-286 CRES	AMS 5525	PASSIVATE	QQ-P-35

CODE	NUT MATERIAL	SPEC.	FINISH	SPEC.
-	A-286 CRES	AMS 5525, 5726, 5731, 5732, 5734, 5737	PASSIVATE	QQ-P-35

OPTIONAL PRIMER COATING ON BASEPLATE: EPOXY PRIMER PER MIL-P-85582.

EXAMPLE PART NUMBER

CB9197 CR 4 - 1 P

ADDITIONAL REQUIREMENTS:

NUT ELEMENT MEETS THE STRENGTH REQUIREMENTS OF MIL-N-25027.

OPTIONAL PRIMER ON BASEPLATE
STANDARD THREAD RELIEF R
NUT MATERIAL - A-286 CRES
THREAD SIZE - .2500-28 UNJF-3B
BASEPLATE MATERIAL - A-286 CRES
BASIC PART NUMBER

UNLESS OTHERWISE SPECIFIED, ALL DIMENSIONS ARE IN INCHES AND TOLERANCES ARE AS SHOWN BELOW. DIMENSIONAL TOLERANCES AND SYMBOLS PER ANSI Y14.5M-1982.

PROPRIETARY PARTS SHOWN IN THIS DRAWING ARE THE SUBJECT OF ISSUED UNITED STATES AND FOREIGN PATENTS AND PATENTS PENDING. UNAUTHORIZED REPRODUCTION AND/OR DISTRIBUTION OF THIS DRAWING IS SPECIFICALLY PROHIBITED.

GLICK BOND

CARSON CITY
NEVADA 89706

APPROVALS		DATE		TITLE			
ANGLES	±1°	DRAWN	DAC	NUTPLATE, MINIATURE, FLOATING, DEEP C'BORE			
.XX	±.03	CHECKED	DAC	SIZE	CAGE CODE	DWG. NO.	REV.
.XXX	±.010	RELEASED	CGH	A	66530	CB9197	0
.XXXX	±.001	REVISED		SCALE	2/1	12FEB98	SHEET 1 OF 1