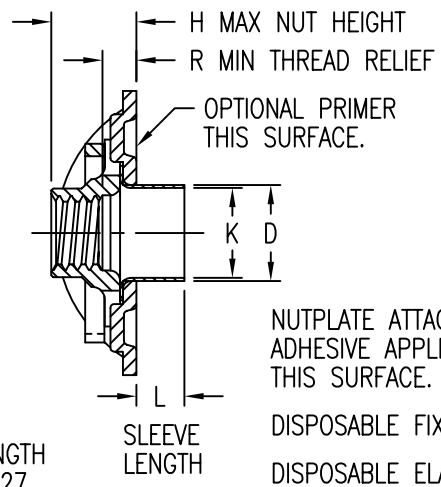
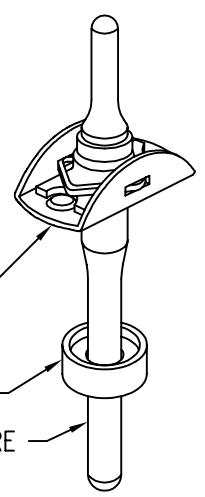


NUTPLATE MEETS THE STRENGTH REQUIREMENTS OF NASM25027.
NOTE: ALL DIMENSIONS BEFORE PAINT.



NUTPLATE ATTACHED BY ADHESIVE APPLIED TO THIS SURFACE.
DISPOSABLE FIXTURE RING
DISPOSABLE ELASTIC FIXTURE HOLDS NUTPLATE WHILE ADHESIVE CURES.



PART NUMBER	THREAD T	A MAX	B MAX	D MAX	K MIN	H MAX	R MIN
CB6209 () 08 () 1 () ()	.1640-32 UNJC-3B	.745	.454	.217	.195	.265	.070
CB6209 () 3 () 1 () ()	.1900-32 UNJF-3B	.745	.454	.250	.225	.265	.070
CB6209 () 3 () 2 () ()						.327	.125
CB6209 () 3 () 3 () ()						.390	.188
CB6209 () 3 () 4 () ()						.453	.250
CB6209 () 3 () 5 () ()						.517	.313
CB6209 () 3 () 6 () ()						.579	.375
CB6209 () 4 () 1 () ()	.2500-28 UNJF-3B	.948	.554	.312	.287	.310	.070
CB6209 () 4 () 2 () ()						.372	.125
CB6209 () 4 () 3 () ()						.434	.188
CB6209 () 4 () 4 () ()						.496	.250
CB6209 () 4 () 5 () ()						.558	.313
CB6209 () 4 () 6 () ()						.620	.375
CB6209 () 5 () 1 () ()	.3125-24 UNJF-3B	1.042	.650	.375	.350	.359	.070
CB6009 () 5 () 2 () ()						.415	.125
CB6209 () 5 () 3 () ()						.476	.188
CB6209 () 5 () 4 () ()						.545	.250
CB6209 () 5 () 5 () ()						.607	.313
CB6209 () 5 () 6 () ()						.670	.375
CB6209 () 6 () 1 () ()	.3750-24 UNJF-3B	1.182	.750	.437	.412	.395	.070
CB6209 () 6 () 2 () ()						.445	.125

UNLESS OTHERWISE SPECIFIED, ALL DIMENSIONS ARE IN INCHES AND TOLERANCES ARE AS SHOWN BELOW. DIMENSIONAL TOLERANCES AND SYMBOLS PER ANSI Y14.5M-1982.

PROPRIETARY PARTS SHOWN IN THIS DRAWING ARE THE SUBJECT OF ISSUED UNITED STATES AND FOREIGN PATENTS AND PATENTS PENDING. UNAUTHORIZED REPRODUCTION AND/OR DISTRIBUTION OF THIS DRAWING IS SPECIFICALLY PROHIBITED.

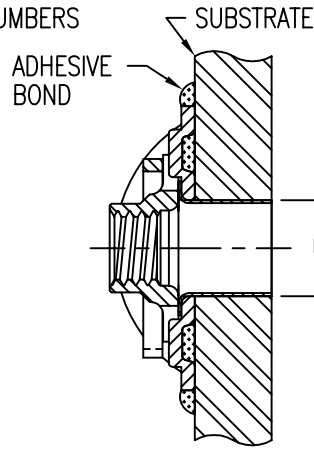


CARSON CITY NEVADA 89706

CAD CB6209-1		APPROVALS		DATE	TITLE			
ANGLES	±1°	DRAWN	DAC	10SEP01	NUTPLATE, TWO LUG, STRAIGHT SLEEVE			
.XX	±.03	CHECKED	DAC	10SEP01	SIZE	CAGE CODE	DWG. NO.	REV.
.XXX	±.010	RELEASED	CGH	10SEP01	A	66530	CB6209	6
.XXXX	±.001	REVISED	DAC	10SEP01	SCALE	2/1 10SEP01		SHEET 1 OF 4

INSTALLATION HOLE SIZE AND REPLACEMENT COMPONENT PART NUMBERS

THREAD SIZE CODE	INSTALLATION HOLE DIA U	NUT PART NO *	CLIP PART NO
08	.218 - .222	CB6001 () 08-1	CB6002-3
3	.250 - .255	CB6001 () 3-()	CB6002-3
4	.312 - .317	CB6001 () 4-()	CB6002-4
5	.375 - .380	CB6001 () 5-()	CB6002-5
6	.438 - .443	CB6001 () 6-()	CB6002-6



SLEEVE LENGTH DATA

SLEEVE CODE	SLEEVE LENGTH L ±.010
1	.031
2	.062
3	.093
4	.125
5	.156
6	.187
7	.218
8	.250
9	.281
10	.312
11	.343
12	.375
13	.406
14	.437
15	.468
16	.500
17	.531
18	.562
19	.593
20	.625
21	.656
22	.687
23	.718
24	.750
25	.781
26	.812
27	.843
28	.875
29	.906
30	.937
31	.968
32	1.000

* FIRST () DESIGNATES NUT MATERIAL CODE.

- CR = A-286 CRES, PASSIVATE, DRI-FILM LUBE.
- CRC = A-286 CRES, CADMIUM PLATING, DRI-FILM LUBE.
- CRS = A-286 CRES, SILVER PLATING.

SECOND () DESIGNATES NUTPLATE THREAD RELIEF (NUT C'BORE) CODE.

"NL" SUFFIX TO NUT PART NO. INDICATES NON-LOCKING NUT ELEMENT.

BASEPLATE MATERIAL AND FINISH DATA

CODE	MATERIAL	SPEC.	FINISH	SPEC.
A	ALUMINUM	QQ-A-250	NONE	
AA	ALUMINUM	QQ-A-250	ANODIZE	MIL-A-8625, TY 1
CR	A-286 CRES	AMS 5525	PASSIVATE	QQ-P-35

OPTIONAL PRIMER COATING ON BASEPLATE: EPOXY PRIMER PER MIL-P-85582.

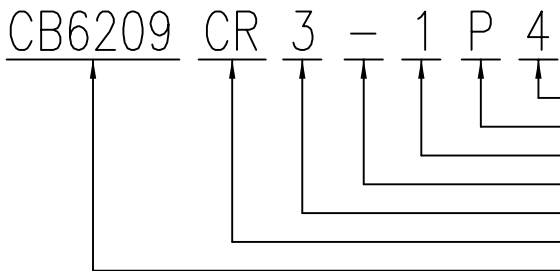
NUT MATERIAL AND FINISH DATA (SEE CB6001)

CODE	MATERIAL	FINISH	SPEC.	LUBRICATION	SPEC.
-	A-286 CRES	PASSIVATE	QQ-P-35	DRI-FILM LUBE	MIL-L-46010, TY 1
CRC	A-286 CRES	CADMIUM PLATING	QQ-P-416	DRI-FILM LUBE	MIL-L-46010, TY 1
CRS	A-286 CRES	SILVER PLATING	AMS 2410	NONE	

MATERIAL AND FINISH DATA:

- MATERIAL: CLIP: 302 CRES PER AMS 5688 OR 5866, OR 18-2 MN CRES PER ARMCO SPEC. (SEE CB6002)
- SLEEVE: 304, 305, OR A-286 CRES PER AMS 5514, 5525, OR 5639
- FINISH: CLIP: PASSIVATE PER QQ-P-35 (SEE CB6002)
- SLEEVE: PASSIVATE PER QQ-P-35

EXAMPLE PART NUMBER



"NL" SUFFIX TO PART NUMBER INDICATES NON-LOCKING NUT ELEMENT.

- SLEEVE LENGTH L IN 32NDS (SEE TABLE) - .125
- OPTIONAL PRIMER COATING ON BASEPLATE
- THREAD RELIEF R - .070 MIN
- NUT MATERIAL - A-286 CRES, DRI-FILM LUBE
- THREAD T SIZE - .1900-32 UNJF-3B
- BASEPLATE MATERIAL - A-286 CRES
- BASIC PART NUMBER

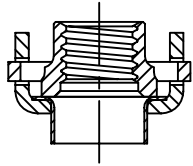
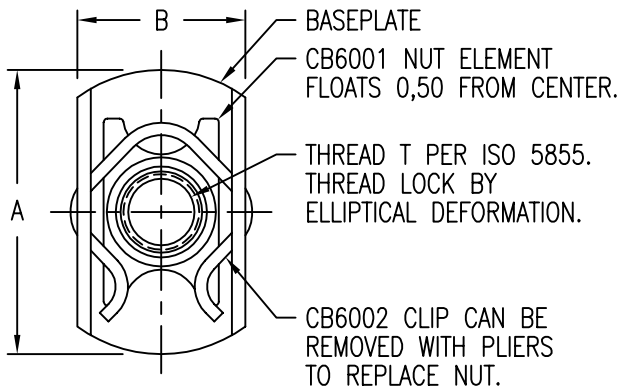
UNLESS OTHERWISE SPECIFIED, ALL DIMENSIONS ARE IN INCHES AND TOLERANCES ARE AS SHOWN BELOW. DIMENSIONAL TOLERANCES AND SYMBOLS PER ANSI Y14.5M-1982.

PROPRIETARY PARTS SHOWN IN THIS DRAWING ARE THE SUBJECT OF ISSUED UNITED STATES AND FOREIGN PATENTS AND PATENTS PENDING. UNAUTHORIZED REPRODUCTION AND/OR DISTRIBUTION OF THIS DRAWING IS SPECIFICALLY PROHIBITED.



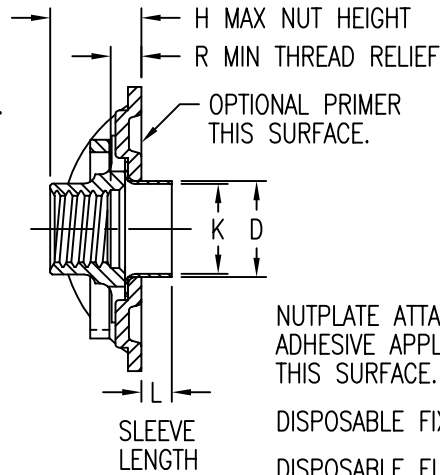
CARSON CITY NEVADA 89706

CAD CB6209-2		APPROVALS		DATE	TITLE			
ANGLES	±1°	DRAWN	DAC	10SEP01	NUTPLATE, TWO LUG, STRAIGHT SLEEVE			
.XX	±.03	CHECKED	DAC	10SEP01	SIZE	CAGE CODE	DWG. NO.	REV.
.XXX	±.010	RELEASED	CGH	10SEP01	A	66530	CB6209	6
.XXXX	±.001	REVISED	DAC	10SEP01	SCALE	2/1 10SEP01		SHEET 2 OF 4



NUTPLATE MEETS THE TENSILE STRENGTH REQUIREMENTS OF ISO 5858 (900 MPa).

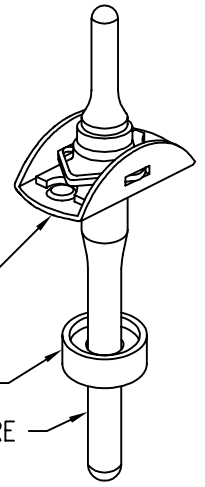
NOTE: ALL DIMENSIONS BEFORE PAINT.



NUTPLATE ATTACHED BY ADHESIVE APPLIED TO THIS SURFACE.

DISPOSABLE FIXTURE RING

DISPOSABLE ELASTIC FIXTURE HOLDS NUTPLATE WHILE ADHESIVE CURES.



THREAD AND DIMENSION DATA

PART NUMBER	THREAD T	A MAX	B MAX	D MAX	K MIN	H MAX	R MIN
CB6209 () 4M () 1 ()	MJ4 X 0,7 4H6H	19,0	11,6	5,70	5,05	5,6	1,6
CB6209 () 5M () 1 ()	MJ5 X 0,8 4H6H	19,0	11,6	6,35	5,70	6,6	1,6
CB6209 () 5M () 4 ()						8,4	4,0
CB6209 () 5M () 6 ()						10,4	6,0
CB6209 () 5M () 8 ()	MJ6 X 1,0 4H5H	24,1	14,1	7,95	7,25	12,4	8,0
CB6209 () 5M () 10 ()						14,4	10,0
CB6209 () 6M () 1 ()						7,5	1,6
CB6209 () 6M () 4 ()	MJ8 X 1,0 4H5H	26,5	16,6	9,55	8,85	9,4	4,0
CB6209 () 6M () 6 ()						11,4	6,0
CB6209 () 6M () 8 ()						13,4	8,0
CB6209 () 6M () 10 ()	MJ10 X 1,25 4H5H	30,1	19,1	11,10	10,45	15,4	10,0
CB6209 () 8M () 1 ()						8,8	1,6
CB6209 () 8M () 4 ()						11,6	4,0
CB6209 () 8M () 6 ()	MJ8 X 1,0 4H5H	26,5	16,6	9,55	8,85	13,6	6,0
CB6209 () 8M () 8 ()						15,6	8,0
CB6209 () 8M () 10 ()						17,6	10,0
CB6209 () 10M () 1 ()	MJ10 X 1,25 4H5H	30,1	19,1	11,10	10,45	10,5	1,6

UNLESS OTHERWISE SPECIFIED, ALL DIMENSIONS ARE IN MILLIMETERS AND TOLERANCES ARE AS SHOWN BELOW. DIMENSIONAL TOLERANCES AND SYMBOLS PER ANSI Y14.5M-1982.

PROPRIETARY PARTS SHOWN IN THIS DRAWING ARE THE SUBJECT OF ISSUED UNITED STATES AND FOREIGN PATENTS AND PATENTS PENDING. UNAUTHORIZED REPRODUCTION AND/OR DISTRIBUTION OF THIS DRAWING IS SPECIFICALLY PROHIBITED.

GLICK BOND

CARSON CITY
NEVADA 89706

CAD CB6209-3
METRIC DIMENSIONS

APPROVALS	DATE
DRAWN DAC	10SEP01
CHECKED DAC	10SEP01
RELEASED CGH	10SEP01
REVISED DAC	10SEP01

TITLE			
NUTPLATE, TWO LUG, STRAIGHT SLEEVE			
SIZE	CAGE CODE	DWG. NO.	REV.
A	66530	CB6209 (METRIC)	6
SCALE	2/1 10SEP01		SHEET 3 OF 4

INSTALLATION HOLE SIZE AND REPLACEMENT COMPONENT PART NUMBERS

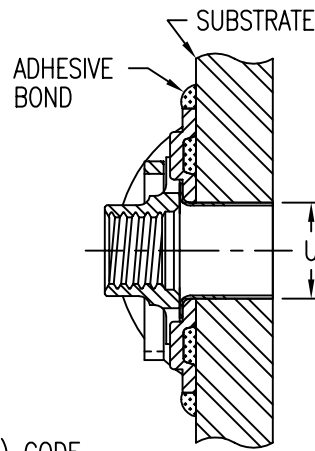
THREAD SIZE CODE	INSTALLATION HOLE DIA U	NUT PART NO. *	CLIP PART NO.
4M	5,70 - 5,85	CB6001 () 4M 1	CB6002-5M
5M	6,35 - 6,50	CB6001 () 5M ()	CB6002-5M
6M	7,95 - 8,10	CB6001 () 6M ()	CB6002-6M
8M	9,55 - 9,70	CB6001 () 8M ()	CB6002-8M
10M	11,10 - 11,25	CB6001 () 10M 1	CB6002-10M

* FIRST () DESIGNATES NUT MATERIAL CODE.

CR = A-286 CRES, PASSIVATE, DRI-FILM LUBE.
 CRC = A-286 CRES, CADMIUM PLATING, DRI-FILM LUBE.
 CRS = A-286 CRES, SILVER PLATING.

SECOND () DESIGNATES NUTPLATE THREAD RELIEF (NUT C'BORE) CODE.

"NL" SUFFIX TO NUT PART NO. INDICATES NON-LOCKING NUT ELEMENT.



SLEEVE LENGTH DATA

SLEEVE CODE	SLEEVE LENGTH L ±0,25
005	0,5
010	1,0
015	1,5
020	2,0
025	2,5
030	3,0
035	3,5
040	4,0
045	4,5
050	5,0
055	5,5
060	6,0
065	6,5
070	7,0
075	7,5
080	8,0
085	8,5
090	9,0
095	9,5
100	10,0
105	10,5
110	11,0
115	11,5
120	12,0
125	12,5
130	13,0
135	13,5
140	14,0
145	14,5
150	15,0

BASEPLATE MATERIAL AND FINISH DATA

CODE	MATERIAL	SPEC.	FINISH	SPEC.
A	ALUMINUM	QQ-A-250	NONE	
AA	ALUMINUM	QQ-A-250	ANODIZE	MIL-A-8625, TY 1
CR	A-286 CRES	AMS 5525	PASSIVATE	QQ-P-35

OPTIONAL PRIMER COATING ON BASEPLATE: EPOXY PRIMER PER MIL-P-85582.

NUT MATERIAL AND FINISH DATA

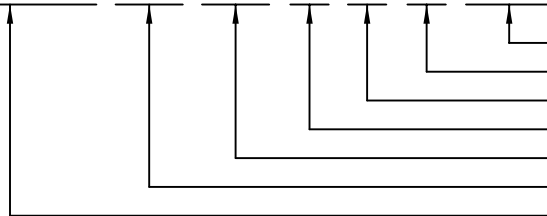
CODE	MATERIAL	FINISH	SPEC.	LUBRICATION	SPEC.
NONE	A-286 CRES	PASSIVATE	QQ-P-35	DRI-FILM LUBE	MIL-L-46010, TY 1
CRC	A-286 CRES	CADMIUM PLATING	QQ-P-416	DRI-FILM LUBE	MIL-L-46010, TY 1
CRS	A-286 CRES	SILVER PLATING	AMS 2410	NONE	

MATERIAL AND FINISH DATA:

MATERIAL: CLIP: 302 CRES PER AMS 5688 OR 5866, OR 18-2 MN CRES PER ARMCO SPEC. (SEE CB6002)
 SLEEVE: 304, 305, OR A-286 CRES PER AMS 5514, 5525, OR 5639
 FINISH: CLIP: PASSIVATE PER QQ-P-35 (SEE CB6002)
 SLEEVE: PASSIVATE PER QQ-P-35

EXAMPLE PART NUMBER

CB6209 CR 5M 1 P 020



"NL" SUFFIX TO PART NUMBER INDICATES NON-LOCKING NUT ELEMENT.

SLEEVE LENGTH L IN 0,1 MM (SEE TABLE) - 2,0 MM
 OPTIONAL PRIMER COATING ON BASEPLATE
 THREAD RELIEF R - 1,6 MIN
 NUT MATERIAL - A-286 CRES, DRI-FILM LUBE
 THREAD T SIZE - MJ5 X 0,8 4H6H
 BASEPLATE MATERIAL - A-286 CRES
 BASIC PART NUMBER

UNLESS OTHERWISE SPECIFIED, ALL DIMENSIONS ARE IN MILLIMETERS AND TOLERANCES ARE AS SHOWN BELOW. DIMENSIONAL TOLERANCES AND SYMBOLS PER ANSI Y14.5M-1982.

PROPRIETARY PARTS SHOWN IN THIS DRAWING ARE THE SUBJECT OF ISSUED UNITED STATES AND FOREIGN PATENTS AND PATENTS PENDING. UNAUTHORIZED REPRODUCTION AND/OR DISTRIBUTION OF THIS DRAWING IS SPECIFICALLY PROHIBITED.



CARSON CITY NEVADA 89706

CAD CB6209-4 METRIC DIMENSIONS	
ANGLES	±1°
.X	±0,8
.XX	±0,25

APPROVALS	DATE
DRAWN DAC	10SEP01
CHECKED DAC	10SEP01
RELEASED CGH	10SEP01
REVISED DAC	10SEP01

TITLE NUTPLATE, TWO LUG, STRAIGHT SLEEVE			
SIZE A	CAGE CODE 66530	DWG. NO. CB6209 (METRIC)	REV. 6
SCALE 2/1	10SEP01	SHEET 4 OF 4	