

PART NUMBER	THREAD T	A MAX	B MAX	C MAX	D MIN	E MAX	F MAX	H MAX	R MIN	M MIN	COLOR CODE
CB6008 () 08-2	.1640-32 UNJC-3B	.813	.580	.687	.204	.312	.800	.325	.125	.168	NONE
CB6008 () 3-2				.687				.320	.125		NONE
CB6008 () 3-3								.383	.187		RED
CB6008 () 3-4								.445	.250		GREEN
CB6008 () 3-5								.508	.312		BLACK
CB6008 () 3-6	.1900-32 UNJF-3B	.813	.580		.230	.312	.800	.570	.375	.194	BLUE
CB6008 () 3-7								.633	.437		ORANGE
CB6008 () 3-8								.695	.500		PURPLE
CB6008 () 4-2								.365	.125		NONE
CB6008 () 4-3				.765				.428	.187		RED
CB6008 () 4-4								.490	.250		GREEN
CB6008 () 4-5								.553	.312		BLACK
CB6008 () 4-6								.615	.375		BLUE
CB6008 () 4-7	.2500-28 UNJF-3B	.925	.725	1.025	.290	.375	.950	.678	.437	.254	ORANGE
CB6008 () 4-8								.740	.500		PURPLE
CB6008 () 5-2								.406	.125		NONE
CB6008 () 5-3								.462	.187		RED
CB6008 () 5-4	.3125-24 UNJF-3B	1.037	.807		.353	.438	1.050	.524	.250	.317	GREEN
CB6008 () 5-5								.586	.312		BLACK
CB6008 () 5-6								.649	.375		BLUE
CB6008 () 5-7								.711	.437		ORANGE
CB6008 () 5-8	.774	.500	PURPLE								
CB6008 () 6-2	.3750-24 UNJF-3B	1.21	.990	.950	.415	.485	1.24	.430	.125	.379	NONE
CB6008 () 7-2	.4375-20 UNJF-3B	1.41	1.11	1.10	.478	.560	1.47	.560	.125	.441	NONE
CB6008 () 7-3								.623	.187		RED
CB6008 () 8-2	.5000-20 UNJF-3B	1.66	1.24	1.15	.540	.685	1.70	.640	.125	.504	NONE

UNLESS OTHERWISE SPECIFIED, ALL DIMENSIONS ARE IN INCHES AND TOLERANCES ARE AS SHOWN BELOW. DIMENSIONAL TOLERANCES AND SYMBOLS PER ANSI Y14.5M-1982.

PROPRIETARY PARTS SHOWN IN THIS DRAWING ARE THE SUBJECT OF ISSUED UNITED STATES AND FOREIGN PATENTS AND PATENTS PENDING. UNAUTHORIZED REPRODUCTION AND/OR DISTRIBUTION OF THIS DRAWING IS SPECIFICALLY PROHIBITED.

GLICK BOND

CARSON CITY
NEVADA 89706

CAD CB6008-1

APPROVALS

DATE

TITLE

ANGLES ±1°

DRAWN DAC 15NOV01

NUTPLATE, FLOATING, SEALED, ONE LUG

.XX ±.03

CHECKED DAC 15NOV01

SIZE

CAGE CODE

DWG. NO.

REV.

.XXX ±.010

RELEASED CGH 16NOV01

A

66530

CB6008

8

.XXXX ±.001

REVISED DAC 15NOV01

SCALE 1/1

15NOV01

SHEET 1 OF 4

PART NUMBER	THREAD T	A MAX	B MAX	C MAX	D MIN	E MAX	F MAX	H MAX	R MIN	M MIN	COLOR CODE
CB6008 () 9-2	.5625-18 UNJF-3B	1.84	1.37	1.40	.603	.750	1.90	.700	.125	.568	NONE
CB6008 () 10-2	.6250-18 UNJF-3B	2.03	1.55	1.55	.665	.812	2.11	.765	.125	.630	NONE
CB6008 () 12-2	.7500-16 UNJF-3B	2.39	1.86	1.75	.790	.937	2.47	.890	.125	.755	NONE
CB6008 () 14-2	.8750-14 UNJF-3B	2.64	2.17	1.90	.915	1.062	2.79	1.00	.125	.880	NONE
CB6008 () 16-2	1.0000-12 UNJF-3B	3.18	2.48	2.00	1.040	1.250	3.36	1.13	.125	1.005	NONE

MATERIAL AND FINISH DATA

CODE	NUT MATERIAL	SPEC.	FINISH	SPEC.	DRI-FILM LUBE
-	A-286 CRES	AMS 5525, 5726, 5731, 5732, 5737	PASSIVATE	QQ-P-35	MIL-L-46010 TY 1
CRC			CAD PLATE	QQ-P-416 TY II, CL 2	

CODE	DOME MATERIAL	SPEC.	FINISH	SPEC.
CR	A-286 CRES	AMS 5525, 5726, 5731, 5732, 5737	PASSIVATE	QQ-P-35
ACR				

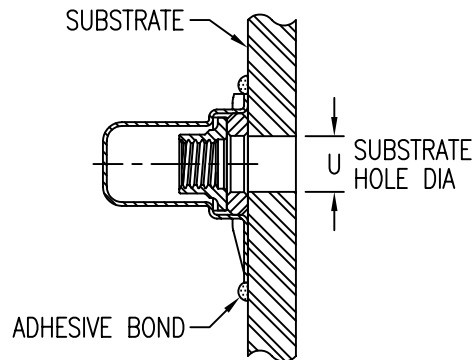
CODE	WASHER MATERIAL	SPEC.	FINISH	SPEC.
CR	A-286 CRES	AMS 5726, 5731, 5732, 5737	PASSIVATE	QQ-P-35
ACR	2024 OR 6061 ALUMINUM	QQ-A-200 OR QQ-A-225	ANODIZE	MIL-A-8625

OPTIONAL PRIMER

CODE	BASEPLATE PRIMER	SPEC.
P	EPOXY PRIMER	MIL-P-85582

OPTIONAL TOPCOAT

CODE	SPEC.
F	MIL-C-27725 TY 2 CL B YELLOW

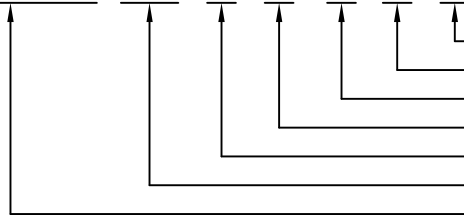


INSTALLATION HOLE SIZE

THREAD CODE	U MAX
08	.204
3	.230
4	.290
5	.353
6	.415
7	.478
8	.540
9	.603
10	.665
12	.790
14	.915
16	1.040

EXAMPLE PART NUMBER

CB6008 CR 4 - 2 P F



"NL" SUFFIX TO PART NUMBER INDICATES NON-LOCKING NUT ELEMENT.

OPTIONAL TOPCOAT ON DOME
 OPTIONAL PRIMER ON BASEPLATE
 NUT THREAD RELIEF R - .125 MIN
 NUT MATERIAL - A-286 CRES, DRI-FILM LUBE
 THREAD SIZE - .2500-28 UNJF-3B
 DOME AND WASHER MATERIAL - A-286 CRES
 BASIC PART NUMBER

UNLESS OTHERWISE SPECIFIED, ALL DIMENSIONS ARE IN INCHES AND TOLERANCES ARE AS SHOWN BELOW. DIMENSIONAL TOLERANCES AND SYMBOLS PER ANSI Y14.5M-1982.

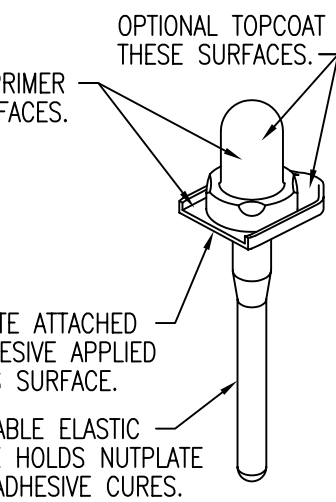
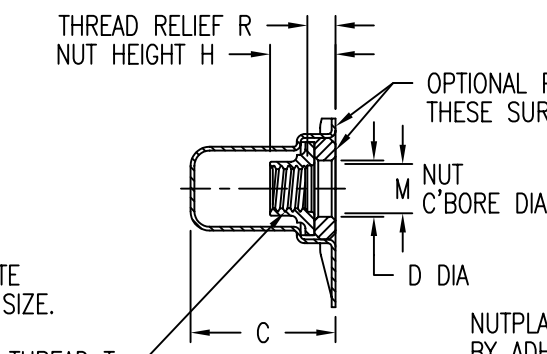
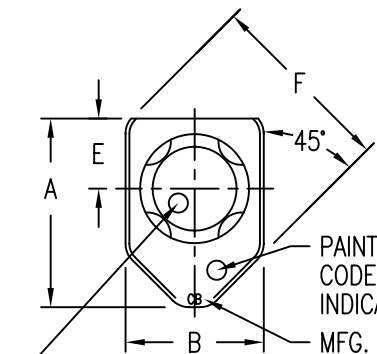
PROPRIETARY PARTS SHOWN IN THIS DRAWING ARE THE SUBJECT OF ISSUED UNITED STATES AND FOREIGN PATENTS AND PATENTS PENDING. UNAUTHORIZED REPRODUCTION AND/OR DISTRIBUTION OF THIS DRAWING IS SPECIFICALLY PROHIBITED.

GLICK BOND

CARSON CITY
NEVADA 89706

CAD CB6008-2		APPROVALS	DATE
ANGLES	±1°	DRAWN DAC	15NOV01
.XX	±.03	CHECKED DAC	15NOV01
.XXX	±.010	RELEASED CGH	16NOV01
.XXXX	±.001	REVISED DAC	15NOV01

TITLE			
NUTPLATE, FLOATING, SEALED, ONE LUG			
SIZE	CAGE CODE	DWG. NO.	REV.
A	66530	CB6008	8
SCALE	1/1	15NOV01	SHEET 2 OF 4



NUTPLATES WITH COUNTERBORED NUTS OTHER THAN STANDARD (DASH 3) ARE MARKED WITH A COLOR CODED DASH NUMBER ON TOP OF THE DOME.

NUTPLATE MEETS THE TENSILE STRENGTH REQUIREMENTS OF ISO5858 (900 MPa).

NOTE: ALL DIMENSIONS BEFORE PAINT.

THREAD T
 THREAD PER ISO5855.
 RADIAL FLOAT OF NUT ELEMENT 0,5 MIN. FROM CENTER LINE IN ANY DIRECTION. THREAD LOCK BY ELLIPTICAL DEFORMATION.

NUTPLATE ATTACHED BY ADHESIVE APPLIED TO THIS SURFACE.
 DISPOSABLE ELASTIC FIXTURE HOLDS NUTPLATE WHILE ADHESIVE CURES.

PART NUMBER	THREAD T	A MAX	B MAX	C MAX	D MIN	E MAX	F MAX	H MAX	R MIN	M MIN	COLOR CODE	
											THREAD	C'BORE
CB6008 () 4M 3	MJ4 X 0,7 4H6H	20,7	14,8	17,5	5,0	8,0	20,4	7,0	3,0	4,1	GREEN	NONE
CB6008 () 5M 3	MJ5 X 0,8 4H6H	20,7	14,8	17,5	6,0	8,0	20,4	8,0	3,0	5,1	BLUE	NONE
CB6008 () 5M 4								8,0	4,0			RED
CB6008 () 5M 6								10,0	6,0			GREEN
CB6008 () 5M 8								12,0	8,0			BLACK
CB6008 () 5M 10								14,0	10,0			BLUE
CB6008 () 6M 3	MJ6 X 1,0 4H5H	23,5	18,5	19,5	7,0	9,6	24,2	9,0	3,0	6,1	ORANGE	NONE
CB6008 () 6M 4								9,0	4,0			RED
CB6008 () 6M 6								11,0	6,0			GREEN
CB6008 () 6M 8								13,0	8,0			BLACK
CB6008 () 6M 10								15,0	10,0			BLUE
CB6008 () 8M 3	MJ8 X 1,0 4H5H	26,4	20,5	21,0	9,0	11,2	26,7	11,0	3,0	8,1	PURPLE	NONE
CB6008 () 8M 4								11,0	4,0			RED
CB6008 () 8M 6								13,0	6,0			GREEN
CB6008 () 8M 8								15,0	8,0			BLACK
CB6008 () 8M 10								17,0	10,0			BLUE

UNLESS OTHERWISE SPECIFIED, ALL DIMENSIONS ARE IN MILLIMETERS AND TOLERANCES ARE AS SHOWN BELOW. DIMENSIONAL TOLERANCES AND SYMBOLS PER ANSI Y14.5M-1982.

PROPRIETARY PARTS SHOWN IN THIS DRAWING ARE THE SUBJECT OF ISSUED UNITED STATES AND FOREIGN PATENTS AND PATENTS PENDING. UNAUTHORIZED REPRODUCTION AND/OR DISTRIBUTION OF THIS DRAWING IS SPECIFICALLY PROHIBITED.

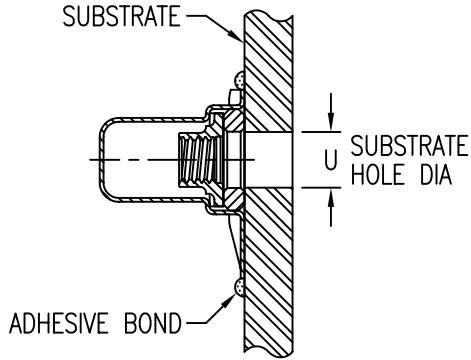


CARSON CITY
 NEVADA 89706

CAD CB6008-3 METRIC DIMENSIONS	
ANGLES	±1°
.X	±0,8
.XX	±0,25

APPROVALS	DATE
DRAWN DAC	15NOV01
CHECKED DAC	15NOV01
RELEASED CGH	16NOV01
REVISED DAC	15NOV01

TITLE NUTPLATE, FLOATING, SEALED, ONE LUG			
SIZE A	CAGE CODE 66530	DWG. NO. CB6008 (METRIC)	REV. 8
SCALE 1/1	15NOV01		SHEET 3 OF 4



INSTALLATION HOLE SIZE

THREAD SIZE CODE	U MAX
4M	5,0
5M	6,0
6M	7,0
8M	9,0

MATERIAL AND FINISH DATA

CODE	NUT MATERIAL	SPEC.	FINISH	SPEC.	DRI-FILM LUBE
NONE	A-286 CRES	AMS 5525, 5726, 5731, 5732, 5737	PASSIVATE	QQ-P-35	MIL-L-46010 TY 1
CRC			CAD PLATE	QQ-P-416 TY II, CL 2	

CODE	DOMES MATERIAL	SPEC.	FINISH	SPEC.
CR	A-286 CRES	AMS 5525, 5726, 5731, 5732, 5737	PASSIVATE	QQ-P-35
ACR				

CODE	WASHER MATERIAL	SPEC.	FINISH	SPEC.
CR	A-286 CRES	AMS 5726, 5731, 5732, 5737	PASSIVATE	QQ-P-35
ACR	2024 OR 6061 ALUMINUM	QQ-A-200 OR QQ-A-225	ANODIZE	MIL-A-8625

OPTIONAL PRIMER

CODE	BASEPLATE PRIMER	SPEC.
P	EPOXY PRIMER	MIL-P-85582

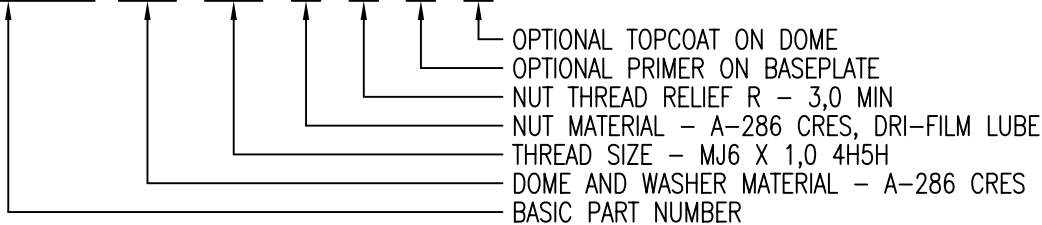
OPTIONAL TOPCOAT

CODE	SPEC.
F	MIL-C-27725 TYP 2 CL B YELLOW

EXAMPLE PART NUMBER

CB6008 CR 6M 3 P F

"NL" SUFFIX TO PART NUMBER INDICATES NON-LOCKING NUT ELEMENT.



UNLESS OTHERWISE SPECIFIED, ALL DIMENSIONS ARE IN MILLIMETERS AND TOLERANCES ARE AS SHOWN BELOW. DIMENSIONAL TOLERANCES AND SYMBOLS PER ANSI Y14.5M-1982.

PROPRIETARY PARTS SHOWN IN THIS DRAWING ARE THE SUBJECT OF ISSUED UNITED STATES AND FOREIGN PATENTS AND PATENTS PENDING. UNAUTHORIZED REPRODUCTION AND/OR DISTRIBUTION OF THIS DRAWING IS SPECIFICALLY PROHIBITED.

GLICK BOND

CARSON CITY
NEVADA 89706

CAD CB6008-4 METRIC DIMENSIONS		<table border="1"> <thead> <tr> <th>APPROVALS</th> <th>DATE</th> </tr> </thead> <tbody> <tr> <td>DRAWN DAC</td> <td>15NOV01</td> </tr> <tr> <td>CHECKED DAC</td> <td>15NOV01</td> </tr> <tr> <td>RELEASED CGH</td> <td>16NOV01</td> </tr> <tr> <td>REVISED DAC</td> <td>15NOV01</td> </tr> </tbody> </table>		APPROVALS	DATE	DRAWN DAC	15NOV01	CHECKED DAC	15NOV01	RELEASED CGH	16NOV01	REVISED DAC	15NOV01	TITLE NUTPLATE, FLOATING, SEALED, ONE LUG		
APPROVALS	DATE															
DRAWN DAC	15NOV01															
CHECKED DAC	15NOV01															
RELEASED CGH	16NOV01															
REVISED DAC	15NOV01															
ANGLES ±1°	.X ±0,8	.XX ±0,25	SIZE A	CAGE CODE 66530	DWG. NO. CB6008 (METRIC)	REV. 8										
			SCALE 1/1	15NOV01	SHEET 4	OF 4										