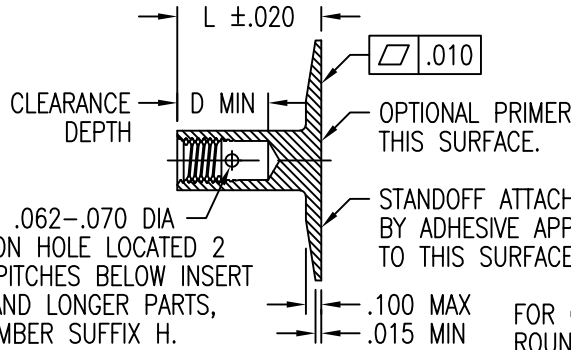
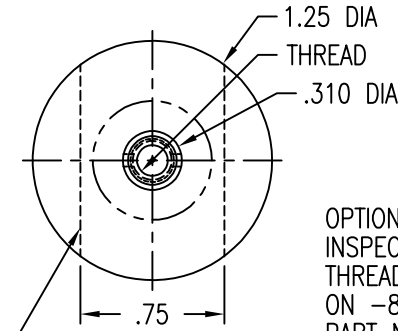
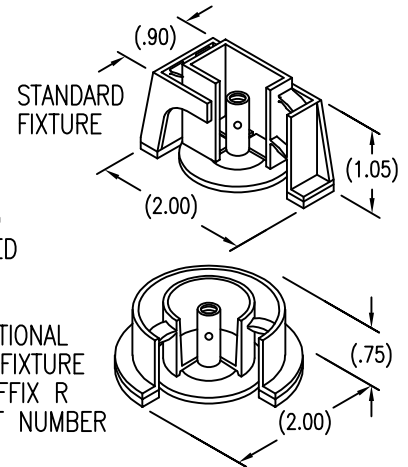


STANDOFF STRAIGHT WITHIN .004 INCH PER INCH OF LENGTH.
 PITCH DIA CONCENTRIC WITH BASE O.D. WITHIN .020 FIM.
 PITCH DIA PERPENDICULAR TO BASE WITHIN $\pm 1^\circ$.

DISPOSABLE PRESSURE SENSITIVE ADHESIVE
 FIXTURE HOLDS STANDOFF WHILE ADHESIVE CURES.



OPTIONAL .062-.070 DIA
 INSPECTION HOLE LOCATED 2
 THREAD PITCHES BELOW INSERT
 ON -8 AND LONGER PARTS,
 PART NUMBER SUFFIX H.



LENGTH L DATA (LENGTH CODE IN SIXTEENTHS OF AN INCH)

CODE	6	7	8	9	10	11	12	13	14	15	16	17	18	20	22	24
L	.375	.437	.500	.562	.625	.687	.750	.812	.875	.937	1.000	1.062	1.125	1.250	1.375	1.500
D MIN	.295	.400	.472													

STANDOFF MATERIAL AND FINISH DATA

CODE	MATERIAL	SPEC.	FINISH	SPEC.
A	2024 OR 6061	AMS-QQ-A-200, AMS-QQ-A-225, AMS-QQ-A-250	NONE	
AA	ALUMINUM		ANODIZE	MIL-A-8625
CR	302, 303, 304 OR A-286 CRES	AMS 5513, 5516, 5636, 5637, 5638, 5639, 5640, 5641, 5647 AMS 5525, 5726, 5731, 5732, 5734, 5737 (CHEMISTRY ONLY)	PASSIVATE	AMS 2700
CRA	A-286 CRES	AMS 5525, 5726, 5731, 5732, 5734, 5737 (CHEMISTRY ONLY)	PASSIVATE	AMS 2700
T	6AL-4V TITANIUM	AMS 4911, 4928, 4965, OR 4967	NONE	

THREAD DATA

CODE	THREAD SIZE
06	.1380-32 UNC-3B
08	.1640-32 UNC-3B
3	.1900-32 UNF-3B

OPTIONAL BASEPLATE PRIMER

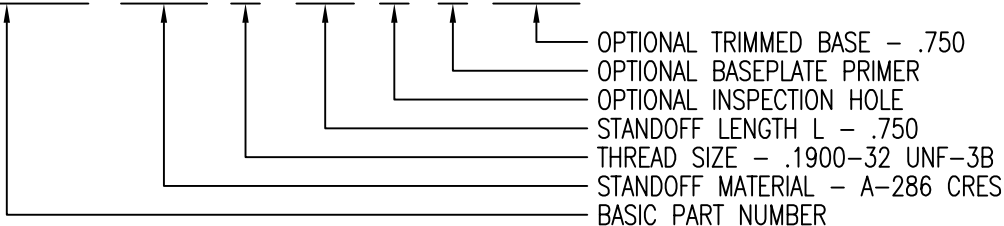
CODE	MATERIAL SPEC.
C	CYTEC BR127 PRIMER
P	MIL-PRF-85582 EPOXY PRIMER
W	CBPS-211 FILM PRIMER

MS21209 OR NAS1130 INSERT
 INSTALLED PER MS33537. DRI-FILM
 LUBE ON INSERT PER AS5272.

THREAD LOCK PER NASM25027.
 STANDOFF ACCOMMODATES AS8879
 UNJ THREAD SCREW.

EXAMPLE PART NUMBER

CB3001 CRA 3-12 H P 750



UNLESS OTHERWISE SPECIFIED, ALL DIMENSIONS ARE
 IN INCHES AND TOLERANCES ARE AS SHOWN BELOW.
 DIMENSIONAL TOLERANCES AND SYMBOLS PER ANSI
 Y14.5M-1982.

PROPRIETARY PARTS SHOWN IN THIS DRAWING ARE THE SUBJECT
 OF ISSUED UNITED STATES AND FOREIGN PATENTS AND PATENTS
 PENDING.
 UNAUTHORIZED REPRODUCTION AND/OR DISTRIBUTION OF THIS
 DRAWING IS SPECIFICALLY PROHIBITED.

GLICK BOND

CARSON CITY
 NEVADA 89706

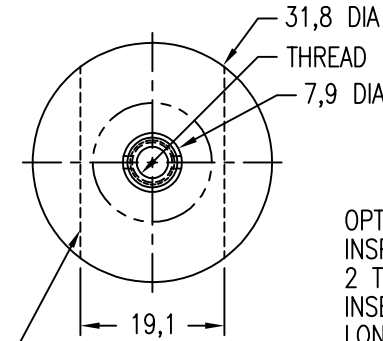
CAD CB3001-1

APPROVALS	DATE
DRAWN <i>DAC</i>	24SEP99
CHECKED <i>DAC</i>	12FEB20
RELEASED <i>JLH</i>	12FEB20
REVISED <i>DAC</i>	12FEB20

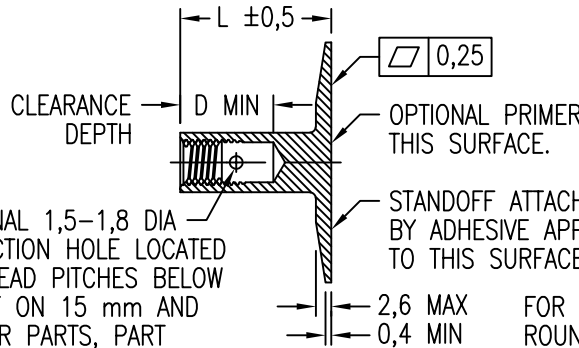
TITLE			
STANDOFF, LOCKING THREAD, ADHESIVE BONDED			
SIZE	CAGE CODE	DWG. NO.	REV.
A	66530	CB3001	17
SCALE	1/1	12FEB20	SHEET 1 OF 2

STANDOFF STRAIGHT WITHIN 0,004 mm PER mm OF LENGTH.
 PITCH DIA CONCENTRIC WITH BASE O.D. WITHIN 0,5 FIM.
 PITCH DIA PERPENDICULAR TO BASE WITHIN ±1°.

DISPOSABLE PRESSURE SENSITIVE ADHESIVE
 FIXTURE HOLDS STANDOFF WHILE ADHESIVE CURES.



FOR OPTIONAL TRIMMED
 BASE ADD 19 SUFFIX
 TO PART NUMBER.



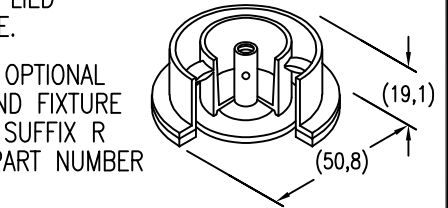
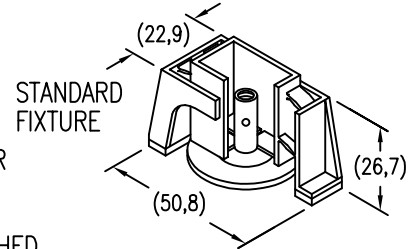
OPTIONAL 1,5-1,8 DIA
 INSPECTION HOLE LOCATED
 2 THREAD PITCHES BELOW
 INSERT ON 15 mm AND
 LONGER PARTS, PART
 NUMBER SUFFIX H.

OPTIONAL PRIMER
 THIS SURFACE.

STANDOFF ATTACHED
 BY ADHESIVE APPLIED
 TO THIS SURFACE.

2,6 MAX
 0,4 MIN

FOR OPTIONAL
 ROUND FIXTURE
 ADD SUFFIX R
 TO PART NUMBER



LENGTH L DATA (LENGTH CODE IN MILLIMETERS)

CODE	10M	12M	15M	20M	25M	30M	35M
L	10	12	15	20	25	30	35
D MIN	7,5		12,3				

STANDOFF MATERIAL AND FINISH DATA

CODE	MATERIAL	SPEC.	FINISH	SPEC.
A	2024 OR 6061	AMS-QQ-A-200, AMS-QQ-A-225, AMS-QQ-A-250	NONE	
AA	ALUMINUM		ANODIZE	MIL-A-8625
CR	302, 303, 304 OR A-286 CRES	AMS 5513, 5516, 5636, 5637, 5638, 5639, 5640, 5641, 5647 AMS 5525, 5726, 5731, 5732, 5734, 5737 (CHEMISTRY ONLY)	PASSIVATE	AMS 2700
CRA	A-286 CRES	AMS 5525, 5726, 5731, 5732, 5734, 5737 (CHEMISTRY ONLY)	PASSIVATE	AMS 2700
T	6AL-4V TITANIUM	AMS 4911, 4928, 4965, OR 4967	NONE	

THREAD DATA

CODE	THREAD SIZE
3M	M3 X 0,5 4H5H
4M	M4 X 0,7 4H5H
5M	M5 X 0,8 4H5H

OPTIONAL BASEPLATE PRIMER

CODE	MATERIAL SPEC.
C	CYTEC BR127 PRIMER
P	MIL-PRF-85582 EPOXY PRIMER
W	CBPS-211 FILM PRIMER

MA3330 OR EQUIVALENT INSERT.
 INSERT INSTALLED PER MA1567.
 DRI-FILM LUBE PER AS5272.
 THREAD LOCK PER ISO 2320.
 STANDOFF ACCOMMODATES
 ISO 5855 MJ THREAD SCREW.

EXAMPLE PART NUMBER

CB3001 CRA 5M 20M H P 19

OPTIONAL TRIMMED BASE - 19,1 mm
 OPTIONAL BASEPLATE PRIMER
 OPTIONAL INSPECTION HOLE
 STANDOFF LENGTH L - 20 mm
 THREAD SIZE - M5 X 0,8 4H5H
 STANDOFF MATERIAL - A-286 CRES
 BASIC PART NUMBER

UNLESS OTHERWISE SPECIFIED, ALL DIMENSIONS ARE
 IN MILLIMETERS AND TOLERANCES ARE AS SHOWN
 BELOW. DIMENSIONAL TOLERANCES AND SYMBOLS
 PER ANSI Y14.5M-1982.

PROPRIETARY PARTS SHOWN IN THIS DRAWING ARE THE SUBJECT
 OF ISSUED UNITED STATES AND FOREIGN PATENTS AND PATENTS
 PENDING. UNAUTHORIZED REPRODUCTION AND/OR DISTRIBUTION OF THIS
 DRAWING IS SPECIFICALLY PROHIBITED.

GLICK BOND

CARSON CITY
 NEVADA 89706

CAD CB3001-2
 METRIC DIMENSIONS

ANGLES	±1°
.X	±0,8
.XX	±0,25

APPROVALS	DATE
DRAWN <i>DAC</i>	24SEP99
CHECKED <i>DAC</i>	12FEB20
RELEASED <i>JLH</i>	12FEB20
REVISED <i>DAC</i>	12FEB20

TITLE			
STANDOFF, LOCKING THREAD, ADHESIVE BONDED			
SIZE	CAGE CODE	DWG. NO.	REV.
A	66530	CB3001 (METRIC)	17
SCALE	1/1		12FEB20
			SHEET 2 OF 2