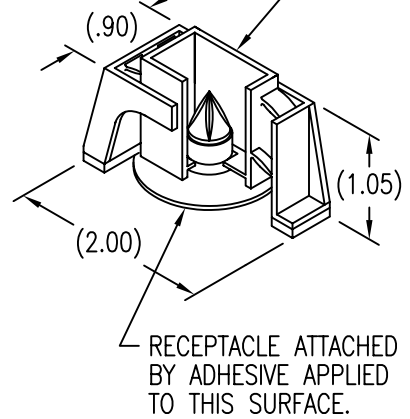
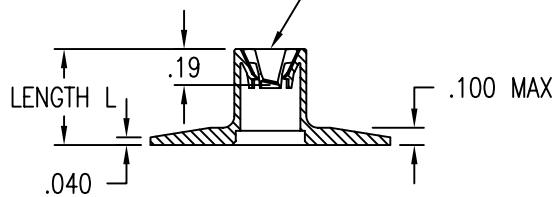


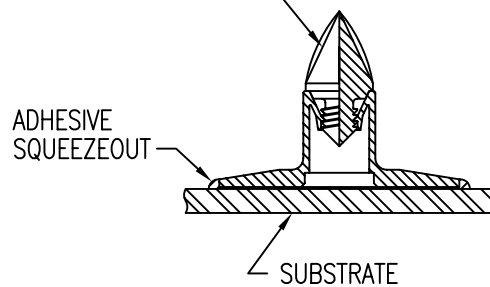
DISPOSABLE PRESSURE SENSITIVE ADHESIVE FIXTURE HOLDS RECEPTACLE WHILE ADHESIVE CURES.



RECEPTACLE ACCEPTS CB9174 AND CB9208 BLANKET RETAINERS AND CB9194 BLANKET INSTALLATION SPEAR.



PART NUMBER WITH S SUFFIX HAS CB9194 BLANKET INSTALLATION SPEAR ATTACHED TO PUNCTURE BLANKET. REPLACE WITH CB9174 OR CB9208 RETAINER TO HOLD BLANKET IN POSITION.



MATERIAL DATA

CODE	MATERIAL	FINISH
V	POLYETHERIMIDE THERMOPLASTIC, 350°F	ABRASIVE CLEAN

LENGTH L DATA

CODE	L
5	.31
8	.50
28	1.75

EXAMPLE PART NUMBER

CB9206 V 3-8 S 750

OPTIONAL TRIMMED BASE - .750
 OPTIONAL CB9194 BLANKET INSTALLATION SPEAR ATTACHED
 LENGTH L IN 16THS - .50
 THREAD SIZE - .1900-32 BUTTRESS DOUBLE LEAD
 MATERIAL - POLYETHERIMIDE
 BASIC PART NUMBER

UNLESS OTHERWISE SPECIFIED, ALL DIMENSIONS ARE IN INCHES AND TOLERANCES ARE AS SHOWN BELOW. DIMENSIONAL TOLERANCES AND SYMBOLS PER ANSI Y14.5M-1982.

PROPRIETARY PARTS SHOWN IN THIS DRAWING ARE THE SUBJECT OF ISSUED UNITED STATES AND FOREIGN PATENTS AND PATENTS PENDING. UNAUTHORIZED REPRODUCTION AND/OR DISTRIBUTION OF THIS DRAWING IS SPECIFICALLY PROHIBITED.

GLICK BOND

CARSON CITY
NEVADA 89706

		APPROVALS	DATE
ANGLES	±1°	DRAWN BSP	26NOV01
.XX	±.03	CHECKED DAC	26NOV01
.XXX	±.010	RELEASED CGH	29NOV01
.XXXX	±.001	REVISED BSP	26NOV01

TITLE			
RECEPTACLE, INSULATION BLANKET MOUNT			
SIZE	CAGE CODE	DWG. NO.	REV.
A	66530	CB9206	1
SCALE	1/1		26NOV01
SHEET 1 OF 1			