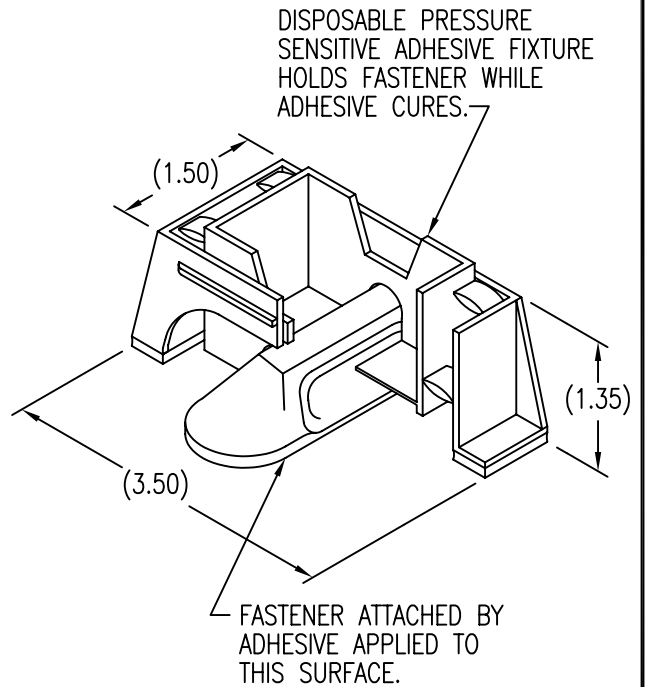


OPTIONAL INTERNAL FIXTURES SUPPLIED IN LIEU OF EXTERNAL FIXTURE ON PARTS WITH F SUFFIX TO PART NUMBER.



MATERIAL AND FINISH DATA

CODE	MATERIAL	FINISH
V	GLASS/POLYETHERIMIDE	ABRASIVE CLEAN
VB	GLASS/POLYETHERIMIDE, BLACK	ABRASIVE CLEAN

EXAMPLE PART NUMBER

CB9205 V F

OPTIONAL INTERNAL FIXTURES
MATERIAL - GLASS/POLYETHERIMIDE
BASIC PART NUMBER

UNLESS OTHERWISE SPECIFIED, ALL DIMENSIONS ARE IN INCHES AND TOLERANCES ARE AS SHOWN BELOW. DIMENSIONAL TOLERANCES AND SYMBOLS PER ANSI Y14.5M-1982.

PROPRIETARY PARTS SHOWN IN THIS DRAWING ARE THE SUBJECT OF ISSUED UNITED STATES AND FOREIGN PATENTS AND PATENTS PENDING. UNAUTHORIZED REPRODUCTION AND/OR DISTRIBUTION OF THIS DRAWING IS SPECIFICALLY PROHIBITED.

GLICK BOND

CARSON CITY
NEVADA 89706

ANGLES	±1°	APPROVALS		DATE
		DRAWN	DATE	TITLE
.XX	±.03	CHECKED <i>DAC</i>	30APR04	LOOP, STRAP FASTENER
.XXX	±.010	RELEASED <i>CGH</i>	30APR04	SIZE A
.XXXX	±.001	REVISED <i>DAC</i>	30APR04	CAGE CODE 66530

SIZE	CAGE CODE	DWG. NO.	REV.
A	66530	CB9205	4
SCALE	1/1	30APR04	SHEET 1 OF 1