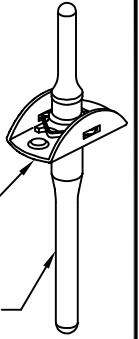


NUTPLATE ATTACHED BY MEANS OF ADHESIVE APPLIED TO THIS SURFACE

DISPOSABLE ELASTIC FIXTURE HOLDS NUTPLATE WHILE ADHESIVE CURES



MATERIAL AND FINISH DATA

CODE	BASEPLATE MATERIAL	FINISH
A	ALUMINUM PER QQ-A-250	NONE
AA	ALUMINUM PER QQ-A-250	ANODIZE
CR	316 STAINLESS STEEL	PASSIVATE

CODE	NUT MATERIAL	FINISH
CR	316 STAINLESS STEEL	PASSIVATE

CLIP MATERIAL	FINISH
18-2 MN STAINLESS STEEL	PASSIVATE

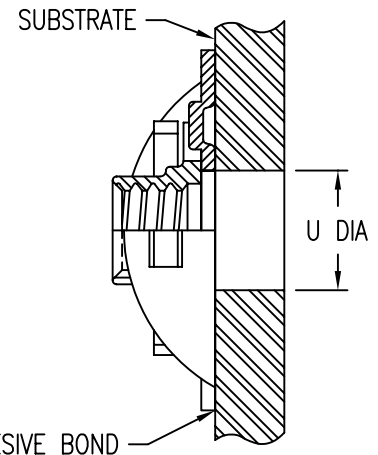
OPTIONAL BASEPLATE FINISH: EPOXY PRIMER COATING.

THREAD T DATA AND DIMENSIONS (THREAD PER ANSI B1.1)

CODE	THREAD T	A MAX	B MAX	D MIN	H MAX	R MIN	U MAX
324	.190-24 UNC-2B	.745	.454	.250	.225	.070	.250
420	.250-20 UNC-2B	.948	.554	.312	.287	.070	.312
518	.312-18 UNC-2B	1.042	.650	.375	.331	.070	.375
616	.375-16 UNC-2B	1.182	.750	.437	.374	.070	.437

THREAD T DATA AND DIMENSIONS (THREAD PER ANSI/ASME B1.13M)

CODE	THREAD T	A MAX	B MAX	D MIN	H MAX	R MIN	U MAX
5M	M5 X 0,8 6H	19,0	11,6	6,35	6,2	1,6	6,35
6M	M6 X 1,0 6H	24,1	14,1	7,90	7,1	1,6	7,90
8M	M8 X 1,25 6H	26,5	16,6	9,50	8,2	1,6	9,50



EXAMPLE PART NUMBER

CB9063 CR 6M P NL

OPTIONAL NON-LOCKING NUT
 OPTIONAL EPOXY PRIMER COATING ON BASEPLATE
 NUT MATERIAL (IF DIFFERENT) - 316 STAINLESS STEEL
 THREAD SIZE T - M6 X 1,0 6H
 BASEPLATE MATERIAL - 316 STAINLESS STEEL
 BASIC PART NUMBER

UNLESS OTHERWISE SPECIFIED, ALL DIMENSIONS ARE IN INCHES AND TOLERANCES ARE AS SHOWN BELOW. DIMENSIONAL TOLERANCES AND SYMBOLS PER ANSI Y14.5M-1982.

PROPRIETARY PARTS SHOWN IN THIS DRAWING ARE THE SUBJECT OF ISSUED UNITED STATES AND FOREIGN PATENTS AND PATENTS PENDING. UNAUTHORIZED REPRODUCTION AND/OR DISTRIBUTION OF THIS DRAWING IS SPECIFICALLY PROHIBITED.

GLICK BOND

CARSON CITY
 NEVADA 89706

		APPROVALS	DATE
ANGLES	±1°	DRAWN DAC	6AUG97
.XX	±.03	CHECKED DAC	6AUG97
.XXX	±.010	RELEASED CGH	6AUG97
.XXXX	±.001	REVISED DAC	6AUG97

TITLE			
NUTPLATE, BONDED, MARINE			
SIZE	CAGE CODE	DWG. NO.	REV.
A	66530	CB9063	3
SCALE	2/1 6AUG97		SHEET 1 OF 1