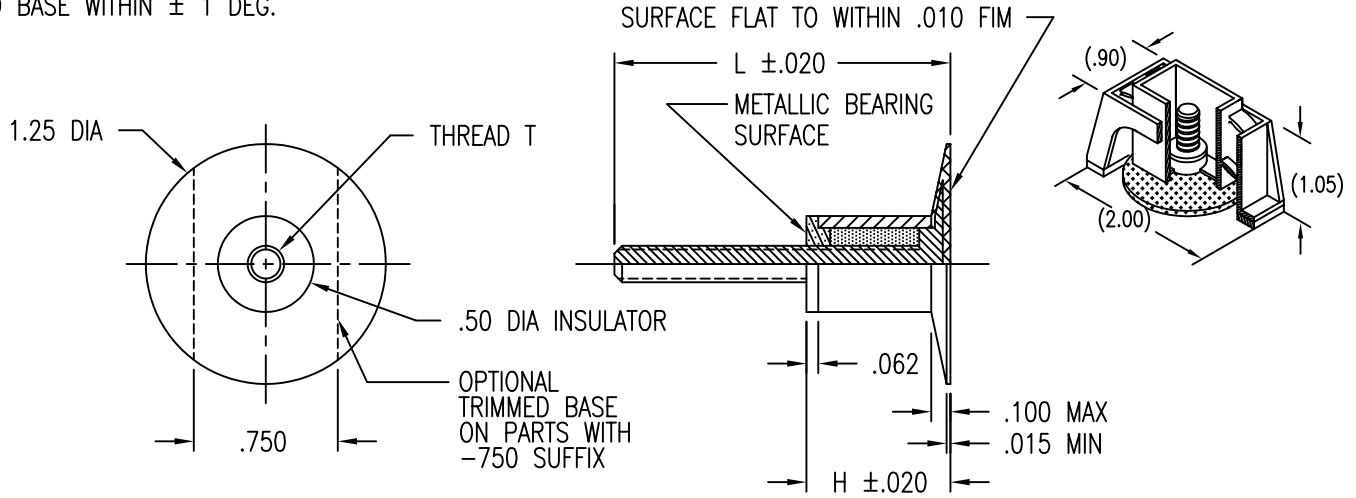


STUD STRAIGHT WITHIN .004 INCH PER INCH OF LENGTH. PITCH DIAM CONCENTRIC WITH BASE O.D. WITHIN .020 FIM. PITCH DIAM PERPENDICULAR TO BASE WITHIN ± 1 DEG.

SURFACE TEXTURE: ROOT RADIUS AND THD FLANKS 32, OTHER SURFACES 125 MICROINCH. GRIT BLASTED SURFACES 125 TO 250 MICROINCH.

DISPOSABLE PRESSURE SENSITIVE ADHESIVE FIXTURE HOLDS STUD WHILE ADHESIVE CURES



DIMENSION DATA

CODE	8	10	12	14	16	18	20	22	24	26	28	30	32
L	.500	.625	.750	.875	1.000	1.125	1.250	1.375	1.500	1.625	1.750	1.875	2.000

CODE	4	6	8	10	12	14	16	18	20	22	24
H	.250	.375	.500	.625	.750	.875	1.000	1.125	1.250	1.375	1.500

MATERIAL AND FINISH DATA

CODE	THREAD MATL	SPEC.	FINISH	SPEC.
CR	302, 303, 304, OR A-286 CRES	AMS 5513, 5516, 5525, 5636, 5637, 5638, 5639, 5640, 5641, 5647, 5726, 5731, 5732, 5734, OR 5737	PASSIVATE	QQ-P-35
BC	COPPER	ASTM B170 C10100	SILVER PLATE	AMS 2410

CODE	BASEPLATE MATL
G	GLASS/EPOXY 250° F

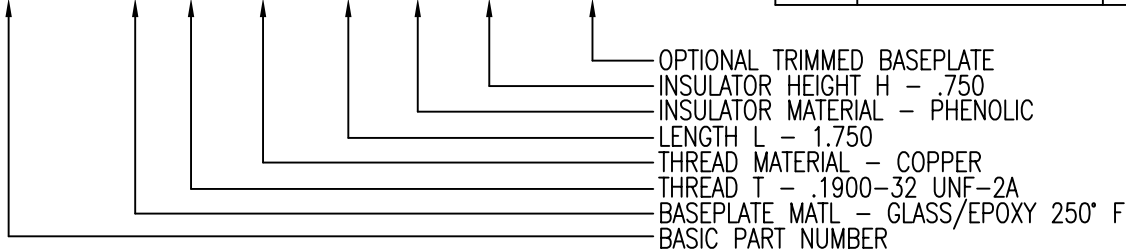
CODE	INSULATOR MATL
P	PHENOLIC

THREAD T DATA

CODE	THREAD T	
	CR MATERIAL	BC MATERIAL
3	.1900-32 UNJF-3A	.1900-32 UNF-2A
4	.2500-28 UNJF-3A	.2500-28 UNF-2A
5	.3125-24 UNJF-3A	.3125-24 UNF-2A

EXAMPLE PART NUMBER

CB9046 G 3 BC 28 P 12-750



UNLESS OTHERWISE SPECIFIED, ALL DIMENSIONS ARE IN INCHES AND TOLERANCES ARE AS SHOWN BELOW. DIMENSIONAL TOLERANCES AND SYMBOLS PER ANSI Y14.5M-1982.

PROPRIETARY PARTS SHOWN IN THIS DRAWING ARE THE SUBJECT OF ISSUED UNITED STATES AND FOREIGN PATENTS AND PATENTS PENDING. UNAUTHORIZED REPRODUCTION AND/OR DISTRIBUTION OF THIS DRAWING IS SPECIFICALLY PROHIBITED.

GLICK BOND

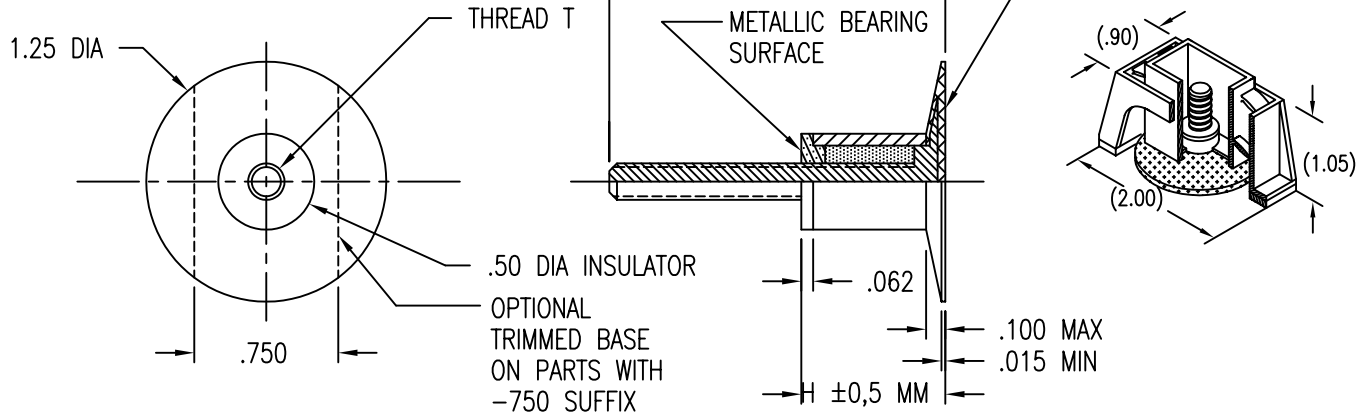
CARSON CITY NEVADA 89706

CAD CB9046-1		APPROVALS		DATE	TITLE			
ANGLES ±1°		DRAWN	MGV	7FEB97	STUD, COMPOSITE BASE, INSULATED SPACER			
.XX ±.03	CHECKED	DAC	7FEB97	SIZE	CAGE CODE	DWG. NO.	REV.	
.XXX ±.010	RELEASED	CGH	7FEB97	A	66530	CB9046	6	
.XXXX ±.001	REVISED	MGV	7FEB97	SCALE	1/1	7FEB97	SHEET 1 OF 2	

STUD STRAIGHT WITHIN .004 INCH PER INCH OF LENGTH. PITCH DIAM CONCENTRIC WITH BASE O.D. WITHIN .020 FIM. PITCH DIAM PERPENDICULAR TO BASE WITHIN ± 1 DEG.

SURFACE TEXTURE: ROOT RADIUS AND THD FLANKS 32, OTHER SURFACES 125 MICROINCH. GRIT BLASTED SURFACES 125 TO 250 MICROINCH.

DISPOSABLE PRESSURE SENSITIVE ADHESIVE FIXTURE HOLDS STUD WHILE ADHESIVE CURES



DIMENSION DATA

CODE	12M	15M	20M	25M	30M	35M	
L	12	15	20	25	30	35	MILLIMETERS

CODE	6M	10M	15M	20M	25M	
H	6	10	15	20	25	MILLIMETERS

MATERIAL AND FINISH DATA

CODE	THREAD MATL	SPEC.	FINISH	SPEC.
CR	302, 303, 304, OR A-286 CRES	AMS 5513, 5516, 5525, 5636, 5637, 5638, 5639, 5640, 5641, 5647, 5726, 5731, 5732, 5734, OR 5737	PASSIVATE	QQ-P-35
BC	COPPER	ASTM B170 C10100	SILVER PLATE	AMS 2410

CODE	BASEPLATE MATL
G	GLASS/EPOXY 250° F

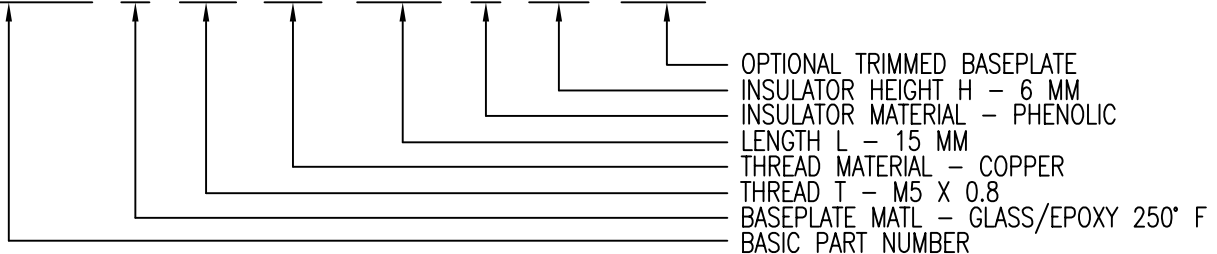
CODE	INSULATOR MATL
P	PHENOLIC

THREAD T DATA

CODE	THREAD T	
	CR MATERIAL	BC MATERIAL
5M	MJ5 X 0,8 4h6h	M5 X 0,8 6g
6M	MJ6 X 1,0 4h6h	M6 X 1,0 6g

EXAMPLE PART NUMBER

CB9046 G 5M BC 15M P 6M-750



UNLESS OTHERWISE SPECIFIED, ALL DIMENSIONS ARE IN INCHES AND TOLERANCES ARE AS SHOWN BELOW. DIMENSIONAL TOLERANCES AND SYMBOLS PER ANSI Y14.5M-1982.

PROPRIETARY PARTS SHOWN IN THIS DRAWING ARE THE SUBJECT OF ISSUED UNITED STATES AND FOREIGN PATENTS AND PATENTS PENDING. UNAUTHORIZED REPRODUCTION AND/OR DISTRIBUTION OF THIS DRAWING IS SPECIFICALLY PROHIBITED.

CLICK BOND

CARSON CITY
NEVADA 89706

CAD CB9046-2		APPROVALS		DATE	TITLE		
ANGLES	±1°	DRAWN	MGV	7FEB97	STUD, COMPOSITE BASE, INSULATED SPACER		
.XX	±.03	CHECKED	DAC	7FEB97	SIZE	CAGE CODE	DWG. NO.
.XXX	±.010	RELEASED	CGH	7FEB97	A	66530	CB9046
.XXXX	±.001	REVISED	MGV	7FEB97	SCALE	1/1	7FEB97
							SHEET 2 OF 2