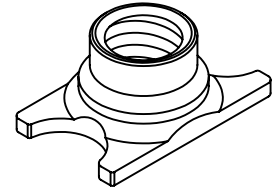
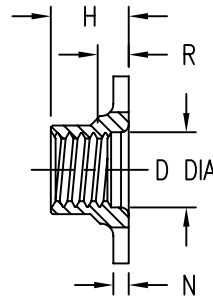


THREAD T PER
MIL-S-8879.
THREAD LOCK BY
ELLIPTICAL DEFORMATION
PER NASM25027.



THREAD AND DIMENSION DATA

PART NUMBER	THREAD T	A MAX	B MAX	C MAX	D MIN	H MAX	R MIN	N	LB/100 *
CB6001 () 08-1	.1640-32 UNJC-3B	.492	.305	.305	.168	.208	.041	.042 .028	.14
CB6001 () 3-1	.1900-32 UNJF-3B	.492	.305	.305	.194	.208	.041	.042 .028	.18
CB6001 () 3-2						.270	.100		.22
CB6001 () 3-3						.333	.163		.28
CB6001 () 3-4						.396	.225		.34
CB6001 () 3-5						.460	.288		.38
CB6001 () 3-6						.522	.350		.43
CB6001 () 4-1	.2500-28 UNJF-3B	.567	.405	.367	.254	.253	.036	.052 .040	.39
CB6001 () 4-2						.315	.100		.43
CB6001 () 4-3						.377	.155		.56
CB6001 () 4-4						.439	.225		.60
CB6001 () 4-5						.501	.288		.70
CB6001 () 4-6						.563	.350		.79
CB6001 () 5-1	.3125-24 UNJF-3B	.732	.485	.483	.317	.294	.036	.064 .045	.65
CB6001 () 5-2						.350	.100		.71
CB6001 () 5-3						.411	.150		.82
CB6001 () 5-4						.480	.225		.94
CB6001 () 5-5						.542	.280		1.05
CB6001 () 5-6						.605	.350		1.16
CB6001 () 6-1	.3750-24 UNJF-3B	.790	.565	.565	.379	.320	.025	.082 .055	1.08
CB6001 () 6-2						.370	.100		1.20
CB6001 () 7-1	.4375-20 UNJF-3B	1.005	.660	.720	.442	.445	.025	.082 .070	2.06
CB6001 () 8-1	.5000-20 UNJF-3B	1.025	.720	.720	.504	.525	.025	.082 .070	2.30

* APPROXIMATE WEIGHT.

UNLESS OTHERWISE SPECIFIED, ALL DIMENSIONS ARE IN INCHES AND TOLERANCES ARE AS SHOWN BELOW. DIMENSIONAL TOLERANCES AND SYMBOLS PER ANSI Y14.5M-1982.

PROPRIETARY PARTS SHOWN IN THIS DRAWING ARE THE SUBJECT OF ISSUED UNITED STATES AND FOREIGN PATENTS AND PATENTS PENDING. UNAUTHORIZED REPRODUCTION AND/OR DISTRIBUTION OF THIS DRAWING IS SPECIFICALLY PROHIBITED.

GLICK BOND

CARSON CITY
NEVADA 89706

CAD CB6001-1

APPROVALS	DATE
DRAWN <i>DAC</i>	9FEB04
CHECKED <i>DOC/mtm</i>	9FEB04
RELEASED <i>CGH</i>	9FEB04
REVISED <i>DAC</i>	9FEB04

TITLE			
NUT ELEMENT			
SIZE	CAGE CODE	DWG. NO.	REV.
A	66530	CB6001	10
SCALE	2/1		9FEB04
			SHEET 1 OF 4

NUT MATERIAL AND FINISH DATA

CODE	MATERIAL	SPEC.	PASSIVATE	PLATING	SPEC.	DRI-FILM LUBE
CR	A-286 CRES	AMS 5525, 5726, 5731, 5732, 5734, 5737	QQ-P-35	NONE *	NONE	MIL-L-46010
CRC	A-286 CRES	AMS 5525, 5726, 5731, 5732, 5734, 5737	QQ-P-35	CADMIUM	QQ-P-416	MIL-L-46010
CRS	A-286 CRES	AMS 5525, 5726, 5731, 5732, 5734, 5737	QQ-P-35	SILVER	AMS 2410	NONE

* MANUFACTURER'S OPTIONAL FINISH: NICKEL STRIKE OR COPPER PLATE BEFORE LUBE, CETYL ALCOHOL AFTER LUBE.

STRENGTH AND REUSE REQUIREMENTS: NASM25027 (250°F)

PROCUREMENT SPECIFICATION: NASM25027

NOTES: (PART NUMBER CHANGE 24OCT96, NUT DESIGN SAME)

CB6001 () 2-1 PART NUMBER IS INACTIVE FOR NEW DESIGN. USE CB6001 () 08-1.

EXAMPLE PART NUMBER

CB6001 CR 3-1

"NL" SUFFIX TO PART NUMBER
INDICATES NON-LOCKING NUT ELEMENT.

COUNTERBORE DEPTH R - .041 MIN
THREAD T SIZE - .1900-32 UNJF-3B
NUT MATERIAL - A-286 CRES, DRI-FILM LUBE
BASIC PART NUMBER

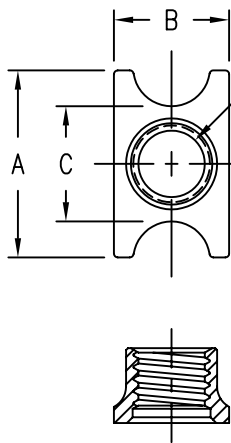
UNLESS OTHERWISE SPECIFIED, ALL DIMENSIONS ARE IN INCHES AND TOLERANCES ARE AS SHOWN BELOW. DIMENSIONAL TOLERANCES AND SYMBOLS PER ANSI Y14.5M-1982.

PROPRIETARY PARTS SHOWN IN THIS DRAWING ARE THE SUBJECT OF ISSUED UNITED STATES AND FOREIGN PATENTS AND PATENTS PENDING. UNAUTHORIZED REPRODUCTION AND/OR DISTRIBUTION OF THIS DRAWING IS SPECIFICALLY PROHIBITED.

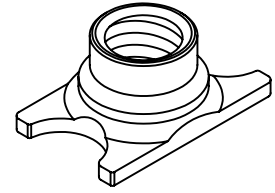
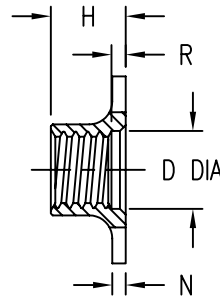
GLICK BOND

CARSON CITY
NEVADA 89706

CAD CB6001-2		APPROVALS		DATE	TITLE		
ANGLES	±1°	DRAWN	DAC	9FEB04	NUT ELEMENT		
.XX	±.03	CHECKED	DOC/mtm	9FEB04	SIZE	CAGE CODE	REV.
.XXX	±.010	RELEASED	CGH	9FEB04	A	66530	10
.XXXX	±.001	REVISED	DAC	9FEB04	SCALE	DWG. NO.	
					2/1	CB6001	
					9FEB04		SHEET 2 OF 4



THREAD T PER ISO5855.
 THREAD LOCK BY
 ELLIPTICAL DEFORMATION



THREAD AND DIMENSION DATA

PART NUMBER	THREAD T	A MAX	B MAX	C MAX	D MIN	H MAX	R MIN	N	GRAMS *
CB6001 () 4M1	MJ4 X 0,7 4H6H	12,5	7,8	7,8	4,1	4,1	0,8	1,07 0,75	0,7
CB6001 () 5M1	MJ5 X 0,8 4H6H	12,5	7,8	7,8	5,1	5,1	0,8	1,07 0,75	0,9
CB6001 () 5M4						6,9	3,2		1,2
CB6001 () 5M6						8,9	5,2		1,5
CB6001 () 5M8						10,9	7,2		1,8
CB6001 () 5M10						12,9	9,2		2,1
CB6001 () 5M12						14,9	11,2		2,4
CB6001 () 6M1	MJ6 X 1,0 4H5H	14,4	10,3	9,4	6,1	6,0	0,8	1,35 1,00	1,7
CB6001 () 6M4						7,9	3,2		2,2
CB6001 () 6M6						9,9	5,2		2,7
CB6001 () 6M8						11,9	7,2		3,2
CB6001 () 6M10						13,9	9,2		3,7
CB6001 () 6M12						15,9	11,2		4,2
CB6001 () 8M1	MJ8 X 1,0 4H5H	18,6	12,4	12,3	8,1	7,1	0,7	1,65 1,25	3,0
CB6001 () 8M4						9,9	3,1		3,6
CB6001 () 8M6						11,9	5,1		4,3
CB6001 () 8M8						13,9	7,1		4,9
CB6001 () 8M10						15,9	9,1		5,5
CB6001 () 8M12						17,9	11,1		6,2
CB6001 () 10M1	MJ10 X 1,25 4H5H	20,1	14,4	14,4	10,1	8,5	0,5	2,10 1,50	5,7

* APPROXIMATE WEIGHT.

UNLESS OTHERWISE SPECIFIED, ALL DIMENSIONS ARE IN MILLIMETERS AND TOLERANCES ARE AS SHOWN BELOW. DIMENSIONAL TOLERANCES AND SYMBOLS PER ANSI Y14.5M-1982.

PROPRIETARY PARTS SHOWN IN THIS DRAWING ARE THE SUBJECT OF ISSUED UNITED STATES AND FOREIGN PATENTS AND PATENTS PENDING. UNAUTHORIZED REPRODUCTION AND/OR DISTRIBUTION OF THIS DRAWING IS SPECIFICALLY PROHIBITED.

GLICK BOND

CARSON CITY
 NEVADA 89706

CAD CB6001-3
 METRIC DIMENSIONS

APPROVALS	DATE
DRAWN <i>DAC</i>	16FEB04
CHECKED <i>DOC/mtm</i>	16FEB04
RELEASED <i>CGH</i>	16FEB04
REVISED <i>DAC</i>	16FEB04

TITLE			
NUT ELEMENT			
SIZE	CAGE CODE	DWG. NO.	REV.
A	66530	CB6001 (METRIC)	10
SCALE	2/1 16FEB04		SHEET 3 OF 4

NUT MATERIAL AND FINISH DATA

CODE	MATERIAL	SPEC.	PASSIVATE	PLATING	SPEC.	DRI-FILM LUBE
CR	A-286 CRES	AMS 5525, 5726, 5731, 5732, 5734, 5737	QQ-P-35	NONE *	NONE	MIL-L-46010
CRC	A-286 CRES	AMS 5525, 5726, 5731, 5732, 5734, 5737	QQ-P-35	CADMIUM	QQ-P-416	MIL-L-46010
CRS	A-286 CRES	AMS 5525, 5726, 5731, 5732, 5734, 5737	QQ-P-35	SILVER	AMS 2410	NONE

* MANUFACTURER'S OPTIONAL FINISH: NICKEL STRIKE OR COPPER PLATE BEFORE LUBE, CETYL ALCOHOL AFTER LUBE.

STRENGTH AND REUSE REQUIREMENTS: ISO5858 (900 MPa)

EXAMPLE PART NUMBER

CB6001 CR 5M 1

"NL" SUFFIX TO PART NUMBER
INDICATES NON-LOCKING NUT ELEMENT.

COUNTERBORE DEPTH R - 0,8 MIN
 THREAD T SIZE - MJ5 X 0,8 4H6H
 NUT MATERIAL - A-286 CRES, DRI-FILM LUBE
 BASIC PART NUMBER

UNLESS OTHERWISE SPECIFIED, ALL DIMENSIONS ARE IN MILLIMETERS AND TOLERANCES ARE AS SHOWN BELOW. DIMENSIONAL TOLERANCES AND SYMBOLS PER ANSI Y14.5M-1982.

PROPRIETARY PARTS SHOWN IN THIS DRAWING ARE THE SUBJECT OF ISSUED UNITED STATES AND FOREIGN PATENTS AND PATENTS PENDING. UNAUTHORIZED REPRODUCTION AND/OR DISTRIBUTION OF THIS DRAWING IS SPECIFICALLY PROHIBITED.

GLICK BOND

CARSON CITY
NEVADA 89706

CAD CB6001-4
METRIC DIMENSIONS

APPROVALS	DATE
DRAWN <i>DAC</i>	16FEB04
CHECKED <i>DAC</i>	16FEB04
RELEASED <i>CGH</i>	16FEB04
REVISED <i>DAC</i>	16FEB04

TITLE			
NUT ELEMENT			
SIZE	CAGE CODE	DWG. NO.	REV.
A	66530	CB6001 (METRIC)	10
SCALE	2/1 16FEB04		SHEET 4 OF 4

ANGLES	±1°
.X	±0,8
.XX	±0,25