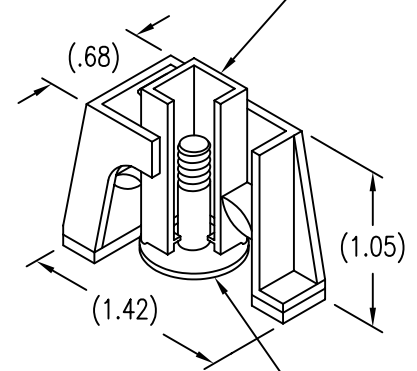
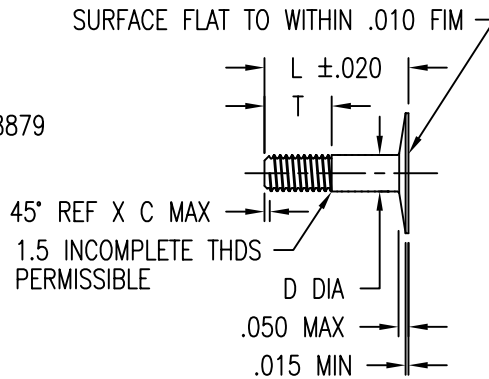
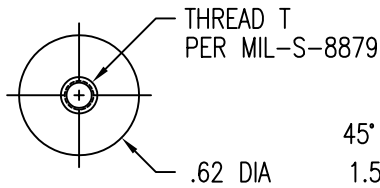


STUD STRAIGHT WITHIN .004 INCH PER INCH OF LENGTH. PITCH DIA. CONCENTRIC WITH BASE O.D. WITHIN .020 FIM. PITCH DIA. PERPENDICULAR TO BASE WITHIN ± 1 DEG.

SURFACE TEXTURE: ROOT RADIUS AND THREAD FLANKS 32, OTHER SURFACES 125 MICROINCH. GRIT BLASTED SURFACES 125 TO 250 MICROINCH.

DISPOSABLE PRESSURE SENSITIVE ADHESIVE FIXTURE HOLDS STUD WHILE ADHESIVE CURES.



STUD ATTACHED BY ADHESIVE APPLIED TO THIS SURFACE.

LENGTH L DATA (LENGTH L IN SIXTEENTHS OF AN INCH)

CODE	12	14	16	18	20	22	24	26	28	30	32
L	.750	.875	1.000	1.125	1.250	1.375	1.500	1.625	1.750	1.875	2.000

MATERIAL AND FINISH DATA

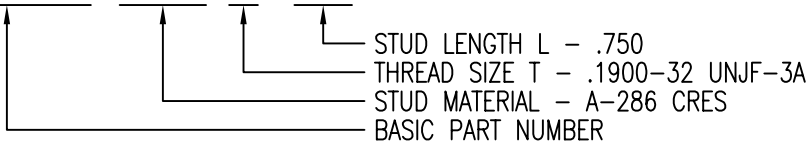
CODE	STUD MATERIAL	SPEC.	FINISH	SPEC.
A	2024 OR 7075	QQ-A-200, QQ-A-225, QQ-A-250	NONE	
AA	ALUMINUM		ANODIZE	MIL-A-8625
CR	302, 303, 304 CRES OR A-286 CRES	AMS 5513, 5516, 5636, 5637, 5638, 5639, 5640, 5641, OR 5647 AMS 5525, 5726, 5731, 5732, 5734, OR 5737 (CHEMISTRY ONLY)	PASSIVATE	QQ-P-35
CRA	A-286 CRES	AMS 5525, 5726, 5731, 5732, 5734, OR 5737 (CHEMISTRY ONLY)	PASSIVATE	QQ-P-35
T	6AL-4V TITANIUM	AMS 4911, 4928, 4965, OR 4967	NONE	

THREAD AND DIMENSION DATA

CODE	THREAD T	C MAX	D $\begin{smallmatrix} +.000 \\ -.004 \end{smallmatrix}$	T
3	.1900-32 UNJF-3A	.039	.1900	.35
4	.2500-28 UNJF-3A	.045	.2500	.43

EXAMPLE PART NUMBER

CB5100 CRA 3-12



UNLESS OTHERWISE SPECIFIED, ALL DIMENSIONS ARE IN INCHES AND TOLERANCES ARE AS SHOWN BELOW. DIMENSIONAL TOLERANCES AND SYMBOLS PER ANSI Y14.5M-1982.

PROPRIETARY PARTS SHOWN IN THIS DRAWING ARE THE SUBJECT OF ISSUED UNITED STATES AND FOREIGN PATENTS AND PATENTS PENDING. UNAUTHORIZED REPRODUCTION AND/OR DISTRIBUTION OF THIS DRAWING IS SPECIFICALLY PROHIBITED.

**GLICK BOND**

CARSON CITY  
NEVADA 89706

		APPROVALS	DATE
ANGLES	±1°	DRAWN BSP	10NOV00
.XX	±.03	CHECKED DAC	10NOV00
.XXX	±.010	RELEASED CGH	16NOV00
.XXXX	±.001	REVISED BSP	10NOV00

TITLE			
STUD, SMALL BASE, ADHESIVE BONDED			
SIZE	CAGE CODE	DWG. NO.	REV.
A	66530	CB5100	1
SCALE	1/1	10NOV00	SHEET 1 OF 1