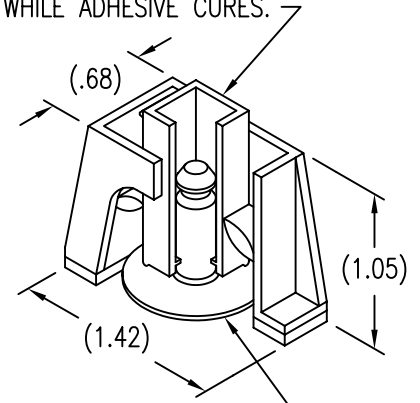
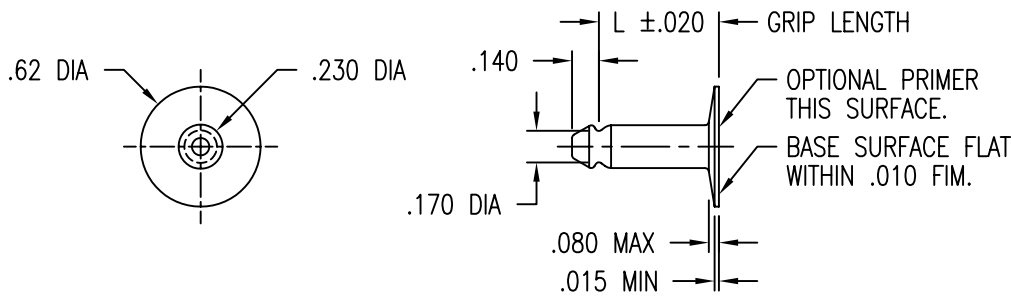


STUD STRAIGHT WITHIN .004 INCH PER INCH OF LENGTH.

DISPOSABLE PRESSURE SENSITIVE ADHESIVE FIXTURE HOLDS STUD WHILE ADHESIVE CURES.



STUD ATTACHED BY ADHESIVE APPLIED TO THIS SURFACE.

NOTE: TO OPERATE WITH MS27977 SOCKET. ALL DIMENSIONS BEFORE PRIMER.

GRIP LENGTH L DATA

CODE	4	6	8	10
L	.250	.375	.500	.625

MATERIAL AND FINISH DATA

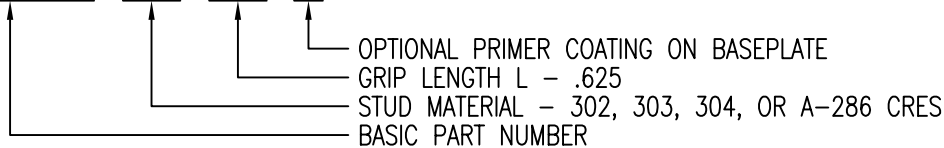
CODE	STUD MATERIAL	SPEC.	FINISH	SPEC.
CR	302, 303, 304 CRES OR A-286 CRES	AMS 5513, 5516, 5636, 5637, 5638, 5639, 5640, 5641, OR 5647 AMS 5525, 5726, 5731, 5732, 5734, OR 5737 (CHEMISTRY ONLY)	PASSIVATE	QQ-P-35
T	6AL-4V TITANIUM	AMS 4911, 4928, 4965, OR 4967	NONE	

OPTIONAL PRIMER

CODE	BASEPLATE PRIMER	SPEC.
P	EPOXY PRIMER	MIL-P-85582
W	FILM PRIMER	CBPS 211

EXAMPLE PART NUMBER

CB5003 CR 10 W



UNLESS OTHERWISE SPECIFIED, ALL DIMENSIONS ARE IN INCHES AND TOLERANCES ARE AS SHOWN BELOW. DIMENSIONAL TOLERANCES AND SYMBOLS PER ANSI Y14.5M-1982.

PROPRIETARY PARTS SHOWN IN THIS DRAWING ARE THE SUBJECT OF ISSUED UNITED STATES AND FOREIGN PATENTS AND PATENTS PENDING. UNAUTHORIZED REPRODUCTION AND/OR DISTRIBUTION OF THIS DRAWING IS SPECIFICALLY PROHIBITED.

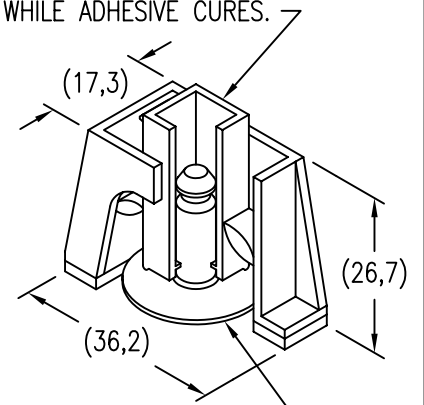
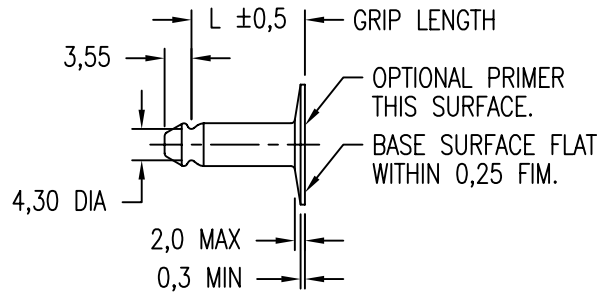
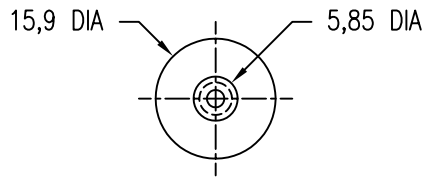
**GLICK BOND**

CARSON CITY  
NEVADA 89706

APPROVALS		DATE	TITLE			
ANGLES	±1°	DRAWN	SNAP STUD, SMALL BASE			
.XX	±.03	CHECKED	SIZE	CAGE CODE	DWG. NO.	REV.
.XXX	±.010	RELEASED	A	66530	CB5003	10
.XXXX	±.001	REVISED	SCALE	1/1	6FEB03	SHEET 1 OF 2

STUD STRAIGHT WITHIN 0,04 MM PER CM OF LENGTH.

DISPOSABLE PRESSURE SENSITIVE ADHESIVE FIXTURE HOLDS STUD WHILE ADHESIVE CURES.



STUD ATTACHED BY ADHESIVE APPLIED TO THIS SURFACE.

NOTE: TO OPERATE WITH MS27977 SOCKET. ALL DIMENSIONS BEFORE PRIMER.

GRIP LENGTH L DATA

CODE	4	6	8	10
L	.250	.375	.500	.625

MATERIAL AND FINISH DATA

CODE	STUD MATERIAL	SPEC.	FINISH	SPEC.
CR	302, 303, 304 CRES OR A-286 CRES	AMS 5513, 5516, 5636, 5637, 5638, 5639, 5640, 5641, OR 5647 AMS 5525, 5726, 5731, 5732, 5734, OR 5737 (CHEMISTRY ONLY)	PASSIVATE	QQ-P-35
T	6AL-4V TITANIUM	AMS 4911, 4928, 4965, OR 4967	NONE	

OPTIONAL PRIMER

CODE	BASEPLATE PRIMER	SPEC.
P	EPOXY PRIMER	MIL-P-85582
W	FILM PRIMER	CBPS 211

EXAMPLE PART NUMBER

CB5003 CR 15M W

OPTIONAL PRIMER COATING ON BASEPLATE  
GRIP LENGTH L - 15 MM  
STUD MATERIAL - 302, 303, 304, OR A-286 CRES  
BASIC PART NUMBER

UNLESS OTHERWISE SPECIFIED, ALL DIMENSIONS ARE IN MILLIMETERS AND TOLERANCES ARE AS SHOWN BELOW. DIMENSIONAL TOLERANCES AND SYMBOLS PER ANSI Y14.5M-1982.

PROPRIETARY PARTS SHOWN IN THIS DRAWING ARE THE SUBJECT OF ISSUED UNITED STATES AND FOREIGN PATENTS AND PATENTS PENDING. UNAUTHORIZED REPRODUCTION AND/OR DISTRIBUTION OF THIS DRAWING IS SPECIFICALLY PROHIBITED.

**GLICK BOND**

CARSON CITY  
NEVADA 89706

CAD CB5003-2  
METRIC DIMENSIONS

APPROVALS	DATE
DRAWN <b>BPEREZ</b>	6FEB03
CHECKED <b>DOC</b>	6FEB03
RELEASED <b>CGH</b>	8FEB03
REVISED <b>BPEREZ</b>	6FEB03

TITLE			
SNAP STUD, SMALL BASE			
SIZE	CAGE CODE	DWG. NO.	REV.
A	66530	CB5003 (METRIC)	10
SCALE	1/1		6FEB03
SHEET 2 OF 2			