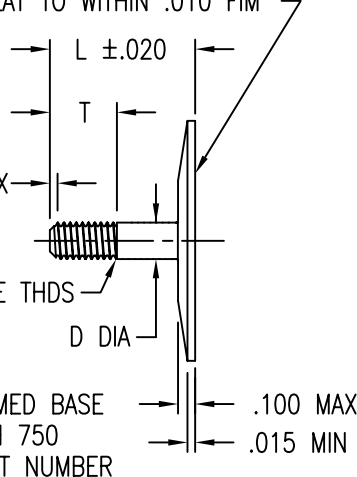
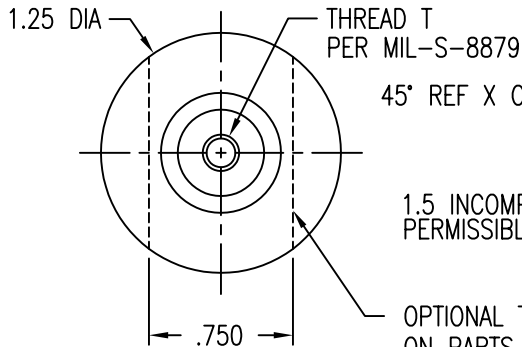


STUD STRAIGHT WITHIN .004 INCH PER INCH OF LENGTH. PITCH DIAM CONCENTRIC WITH BASE O.D. WITHIN .020 FIM. PITCH DIAM PERPENDICULAR TO BASE WITHIN ± 1 DEG.

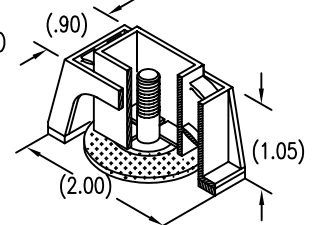
SURFACE TEXTURE: ROOT RADIUS AND THD FLANKS 32, OTHER SURFACES 125 MICROINCH. GRIT BLASTED SURFACES 125 TO 250 MICROINCH.

DISPOSABLE PRESSURE SENSITIVE ADHESIVE FIXTURE HOLDS STUD WHILE ADHESIVE CURES

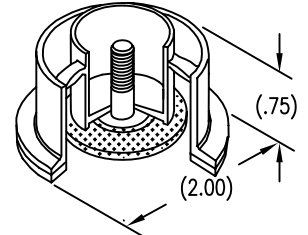
SURFACE FLAT TO WITHIN .010 FIM



STANDARD FIXTURE



FOR OPTIONAL ROUND FIXTURE - ADD SUFFIX R TO PART NUMBER



LENGTH L DATA (LENGTH L IN SIXTEENTHS OF AN INCH)

CODE	12	14	16	18	20	22	24	26	28	30	32	34	36	38	40	42	44	46	46
L	.750	.875	1.000	1.125	1.250	1.375	1.500	1.625	1.750	1.875	2.000	2.125	2.250	2.375	2.500	2.625	2.750	2.875	3.000

MATERIAL AND FINISH DATA

CODE	THREAD MATL	SPEC.	FINISH	SPEC.
A	2024 OR 6061	QQ-A-200, QQ-A-225, OR QQ-A-250	NONE	
AA	ALUMINUM		ANODIZE	MIL-A-8625
CR	302, 303, 304, OR A-286 CRES	AMS 5513, 5516, 5525, 5636, 5637, 5638, 5639, 5640, 5641, 5647, 5726, 5731, 5732, 5734, OR 5737	PASSIVATE	QQ-P-35
CRA	A-286 CRES	AMS 5525, 5726, 5731, 5732, 5734, OR 5737	PASSIVATE	QQ-P-35
T	6AL-4V TITANIUM	AMS 4911, 4928, 4965, OR 4967	NONE	

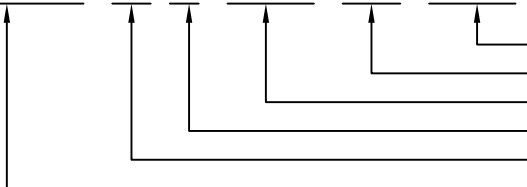
CODE	BASEPLATE MATL
C	CARBON/EPOXY 350° F
G	GLASS/EPOXY 250° F
E	GLASS/EPOXY 350° F

THREAD DATA

CODE	THREAD T	C MAX	D +.000 -.004	T
3	.1900-32 UNJF-3A	.039	.1900	.35
4	.2500-28 UNJF-3A	.045	.2500	.43
5	.3125-24 UNJF-3A	.052	.3125	.47
6	.3750-24 UNJF-3A	.052	.3750	.58

EXAMPLE PART NUMBER

CB4100 G 3 CRA 12-750



OPTIONAL TRIMMED BASE - .750
STUD LENGTH L - .750
THREAD MATERIAL - A-286 CRES
THREAD SIZE T - .1900-32 UNJF-3A
BASEPLATE MATL - GLASS/EPOXY, 250°F
BASIC PART NUMBER

UNLESS OTHERWISE SPECIFIED, ALL DIMENSIONS ARE IN INCHES AND TOLERANCES ARE AS SHOWN BELOW. DIMENSIONAL TOLERANCES AND SYMBOLS PER ANSI Y14.5M-1982.

PROPRIETARY PARTS SHOWN IN THIS DRAWING ARE THE SUBJECT OF ISSUED UNITED STATES AND FOREIGN PATENTS AND PATENTS PENDING. UNAUTHORIZED REPRODUCTION AND/OR DISTRIBUTION OF THIS DRAWING IS SPECIFICALLY PROHIBITED.

GLICK BOND

CARSON CITY
NEVADA 89706

APPROVALS		DATE	TITLE			
ANGLES	±1°	DRAWN RGP	STUD, COMPOSITE BASE, ADHESIVE BONDED			
.XX	±.03	CHECKED DAC	SIZE	CAGE CODE	DWG. NO.	REV.
.XXX	±.010	RELEASED CGH	A	66530	CB4100	0
.XXXX	±.001	REVISED	SCALE	26JUL95		SHEET 1 OF 1