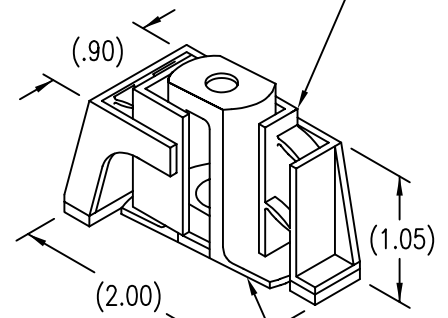
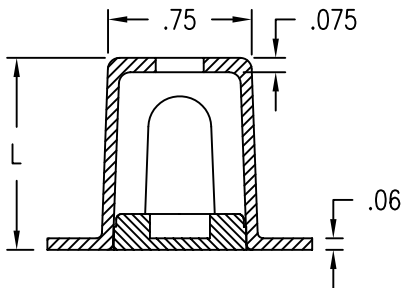


DISPOSABLE PRESSURE SENSITIVE ADHESIVE FIXTURE HOLDS BRACKET WHILE ADHESIVE CURES.



BRACKET ATTACHED BY ADHESIVE APPLIED TO THIS SURFACE.



MATERIAL AND FINISH DATA

CODE	BASEPLATE MATERIAL	FINISH
V	GLASS/THERMOPLASTIC, 350°F	ABRASIVE CLEAN

HOLE DATA

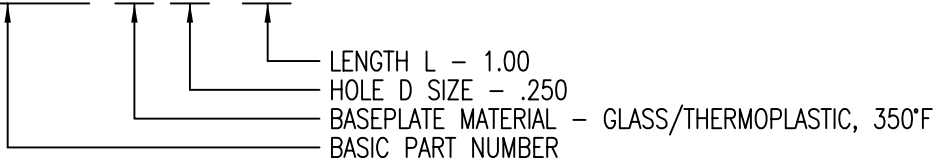
CODE	D	+ .005 - .000
3	.190	
4	.250	
5	.312	

LENGTH L DATA

CODE	L	± .030
8	.500	
12	.750	
16	1.000	
24	1.500	
32	2.000	

EXAMPLE PART NUMBER

CB4035 V 4-16



UNLESS OTHERWISE SPECIFIED, ALL DIMENSIONS ARE IN INCHES AND TOLERANCES ARE AS SHOWN BELOW. DIMENSIONAL TOLERANCES AND SYMBOLS PER ANSI Y14.5M-1982.

PROPRIETARY PARTS SHOWN IN THIS DRAWING ARE THE SUBJECT OF ISSUED UNITED STATES AND FOREIGN PATENTS AND PATENTS PENDING. UNAUTHORIZED REPRODUCTION AND/OR DISTRIBUTION OF THIS DRAWING IS SPECIFICALLY PROHIBITED.

GLICK BOND

CARSON CITY
NEVADA 89706

ANGLES	±1°	APPROVALS		DATE
		DRAWN	BSP	26APR00
.XX	±.03	CHECKED	DAC	26APR00
.XXX	±.010	RELEASED	CGH	26APR00
.XXXX	±.001	REVISED	BSP	26APR00

TITLE			
BRACKET, MOUNTING, STANDOFF, COMPOSITE			
SIZE	CAGE CODE	DWG. NO.	REV.
A	66530	CB4035	1
SCALE	1/1	26APR00	SHEET 1 OF 1