

SADDLE MATERIAL AND FINISH DATA

| CODE | MATERIAL | SPEC. | COLOR |
|------|--------------------------|---------------------|---------|
| N | NYLON, NATURAL | ASTM D4066 OR EQUAL | NATURAL |
| NB | NYLON, BLACK, STABILIZED | ASTM D4066 OR EQUAL | BLACK |
| T | FLUOROPOLYMER | TEFZEL | BLUE |
| V | POLYETHERIMIDE | ULTEM 1000 OR EQUAL | NATURAL |

DIMENSION DATA

| SIZE CODE | MAX TIE WIDTH D REF | SADDLE DIMENSIONS | | |
|-----------|---------------------|-------------------|-----|-----|
| | | A | B | C |
| 2 | .100 | .56 | .34 | .27 |
| 3 | .190 | .67 | .44 | .33 |

BASEPLATE MATERIAL

| CODE | MATERIAL |
|------|--------------------------|
| C | CARBON/EPOXY, 350°F CURE |
| E | GLASS/EPOXY, 350°F CURE |
| G | GLASS/EPOXY, 250°F CURE |

LENGTH L DATA

| CODE | L ±.030 |
|------|---------|
| 8 | .500 |
| 12 | .750 |
| 16 | 1.000 |
| 24 | 1.500 |

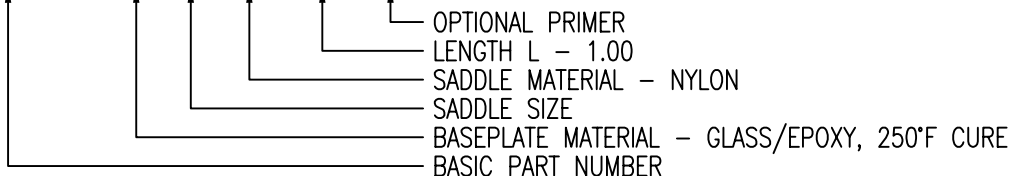
OPTIONAL BASEPLATE PRIMER

| CODE | PRIMER | SPEC. |
|------|--------------|---------------|
| P | EPOXY PRIMER | MIL-PRF-85582 |

RIVET MATERIAL: 300 SERIES CRES OR A-286 CRES.
 RIVET FINISH: PASSIVATE PER AMS-QQ-P-35.
 MANUFACTURER'S OPTION: 300 SERIES CRES TRIM WASHER UNDER RIVET HEAD.

EXAMPLE PART NUMBER

CB4021 G 3 N 16 P



UNLESS OTHERWISE SPECIFIED, ALL DIMENSIONS ARE IN INCHES AND TOLERANCES ARE AS SHOWN BELOW. DIMENSIONAL TOLERANCES AND SYMBOLS PER ANSI Y14.5M-1982.

PROPRIETARY PARTS SHOWN IN THIS DRAWING ARE THE SUBJECT OF ISSUED UNITED STATES AND FOREIGN PATENTS AND PATENTS PENDING. UNAUTHORIZED REPRODUCTION AND/OR DISTRIBUTION OF THIS DRAWING IS SPECIFICALLY PROHIBITED.

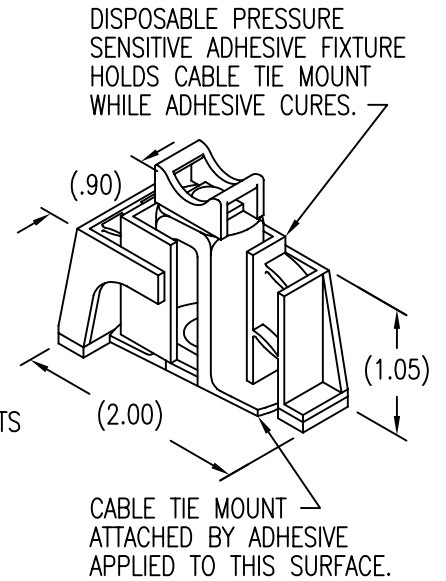
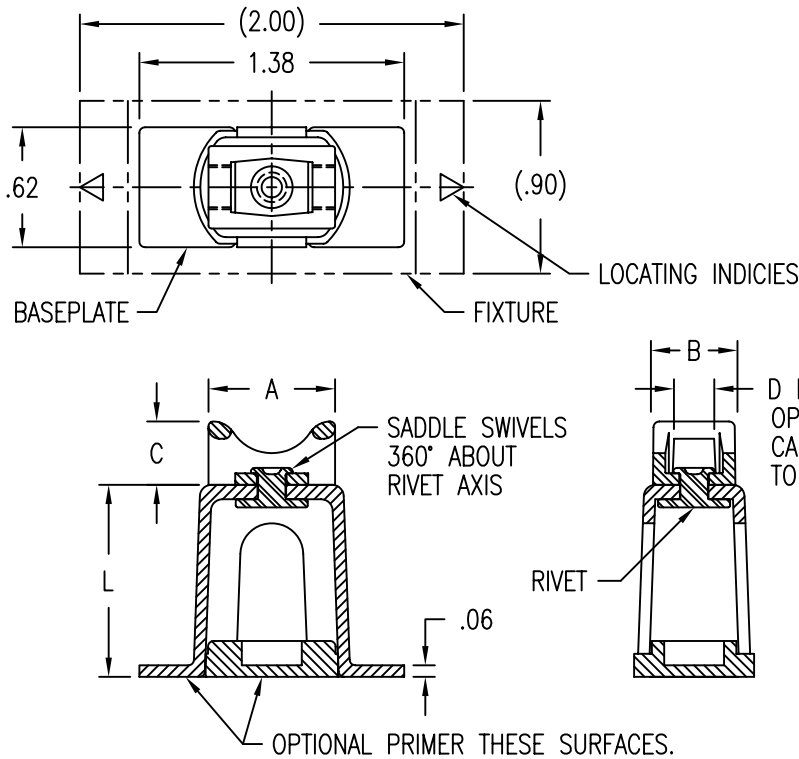
GLICK BOND

CARSON CITY
NEVADA 89706

CAD CB4021-1

| APPROVALS | DATE |
|------------------------|---------|
| DRAWN <i>DAC</i> | 16DEC04 |
| CHECKED <i>DDC/mtm</i> | 16DEC04 |
| RELEASED <i>CGH</i> | 2JAN05 |
| REVISED <i>DAC</i> | 16DEC04 |

| TITLE | | | |
|---------------------------------------|-----------|----------|--------------|
| MOUNT, CABLE TIE, STANDOFF, COMPOSITE | | | |
| SIZE | CAGE CODE | DWG. NO. | REV. |
| A | 66530 | CB4021 | 12 |
| SCALE | 1/1 | 16DEC04 | SHEET 1 OF 2 |



SADDLE MATERIAL AND FINISH DATA

| CODE | MATERIAL | SPEC. | COLOR |
|------|--------------------------|---------------------|---------|
| N | NYLON, NATURAL | ASTM D4066 OR EQUAL | NATURAL |
| NB | NYLON, BLACK, STABILIZED | ASTM D4066 OR EQUAL | BLACK |
| T | FLUOROPOLYMER | TEFZEL | BLUE |
| V | POLYETHERIMIDE | ULTEM 1000 OR EQUAL | NATURAL |

DIMENSION DATA

| SIZE CODE | MAX TIE WIDTH D REF | SADDLE DIMENSIONS | | |
|-----------|---------------------|-------------------|-----|-----|
| | | A | B | C |
| 2 | .100 | .56 | .34 | .27 |
| 3 | .190 | .67 | .44 | .33 |

BASEPLATE MATERIAL

| CODE | MATERIAL |
|------|--|
| U | GLASS/PEI, 30% GLASS |
| UC | CARBON/PEI, 30% CARBON |
| V | GLASS/PEI, 40% GLASS |
| VC | CARBON/PEI, 40% CARBON |
| W | GLASS/PEI, 30% GLASS, LOW HEAT RELEASE |
| WC | CARBON/PEI, 30% CARBON, LOW HEAT RELEASE |

LENGTH L DATA

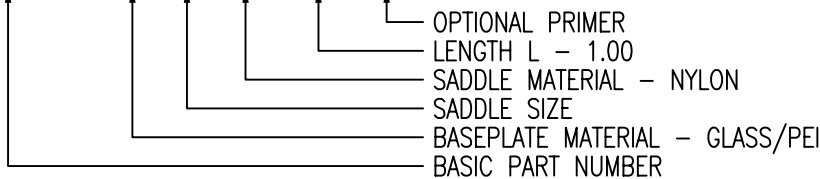
| CODE | L ±.030 |
|------|---------|
| 8 | .500 |
| 12 | .750 |
| 16 | 1.000 |
| 24 | 1.500 |
| 32 | 2.000 |

OPTIONAL BASEPLATE PRIMER

| CODE | PRIMER | SPEC. |
|------|--------------|---------------|
| P | EPOXY PRIMER | MIL-PRF-85582 |

EXAMPLE PART NUMBER

CB4021 V 3 N 16 P



RIVET MATERIAL: 300 SERIES OR A-286 CRES.
 RIVET FINISH: PASSIVATE PER AMS-QQ-P-35.
 MANUFACTURER'S OPTION: 300 SERIES CRES TRIM WASHER UNDER RIVET HEAD.

UNLESS OTHERWISE SPECIFIED, ALL DIMENSIONS ARE IN INCHES AND TOLERANCES ARE AS SHOWN BELOW. DIMENSIONAL TOLERANCES AND SYMBOLS PER ANSI Y14.5M-1982.

PROPRIETARY PARTS SHOWN IN THIS DRAWING ARE THE SUBJECT OF ISSUED UNITED STATES AND FOREIGN PATENTS AND PATENTS PENDING. UNAUTHORIZED REPRODUCTION AND/OR DISTRIBUTION OF THIS DRAWING IS SPECIFICALLY PROHIBITED.

GLICK BOND

CARSON CITY
NEVADA 89706

| CAD CB4021-2 | | APPROVALS | DATE |
|--------------|-------|----------------------------|---------|
| ANGLES | ±1° | DRAWN DAC | 16DEC04 |
| .XX | ±.03 | CHECKED <i>[Signature]</i> | 16DEC04 |
| .XXX | ±.010 | RELEASED CGH | 2JAN05 |
| .XXXX | ±.001 | REVISED DAC | 16DEC04 |

| TITLE | | | |
|---------------------------------------|-----------|----------|--------------|
| MOUNT, CABLE TIE, STANDOFF, COMPOSITE | | | |
| SIZE | CAGE CODE | DWG. NO. | REV. |
| A | 66530 | CB4021 | 12 |
| SCALE 1/1 | | 16DEC04 | SHEET 2 OF 2 |