

SADDLE MATERIAL AND FINISH DATA

CODE	MATERIAL	SPEC.	COLOR
N	NYLON, NATURAL	ASTM D4066 OR EQUAL	NATURAL
NB	NYLON, BLACK, STABILIZED	ASTM D4066 OR EQUAL	BLACK
T	FLUOROPOLYMER	TEFZEL	BLUE
V	POLYETHERIMIDE	ULTEM 1000 OR EQUAL	NATURAL

DIMENSION DATA

SIZE CODE	MAX TIE WIDTH D REF	SADDLE DIMENSIONS		
		A	B	C
2	.100	.56	.34	.27
3	.190	.67	.44	.33
5	.350	.92	.56	.42

BASEPLATE MATERIAL

CODE	MATERIAL
C	CARBON/EPOXY, 350°F CURE
E	GLASS/EPOXY, 350°F CURE
G	GLASS/EPOXY, 250°F CURE

LENGTH DATA

CODE	6	8	12	16	24
L ±.030	.375	.500	.750	1.000	1.500
X ±.015	.750	.875	1.125	1.375	1.875
Y ±.015	1.000	1.125	1.375	1.625	2.125

RIVET MATERIAL: 300 SERIES OR A-286 CRES.
RIVET FINISH: PASSIVATE PER AMS-QQ-P-35.

MANUFACTURER'S OPTION: 300 SERIES CRES TRIM WASHER UNDER RIVET HEAD.

EXAMPLE PART NUMBER

CB4020 G 3 N 8 P 750



UNLESS OTHERWISE SPECIFIED, ALL DIMENSIONS ARE IN INCHES AND TOLERANCES ARE AS SHOWN BELOW. DIMENSIONAL TOLERANCES AND SYMBOLS PER ANSI Y14.5M-1982.

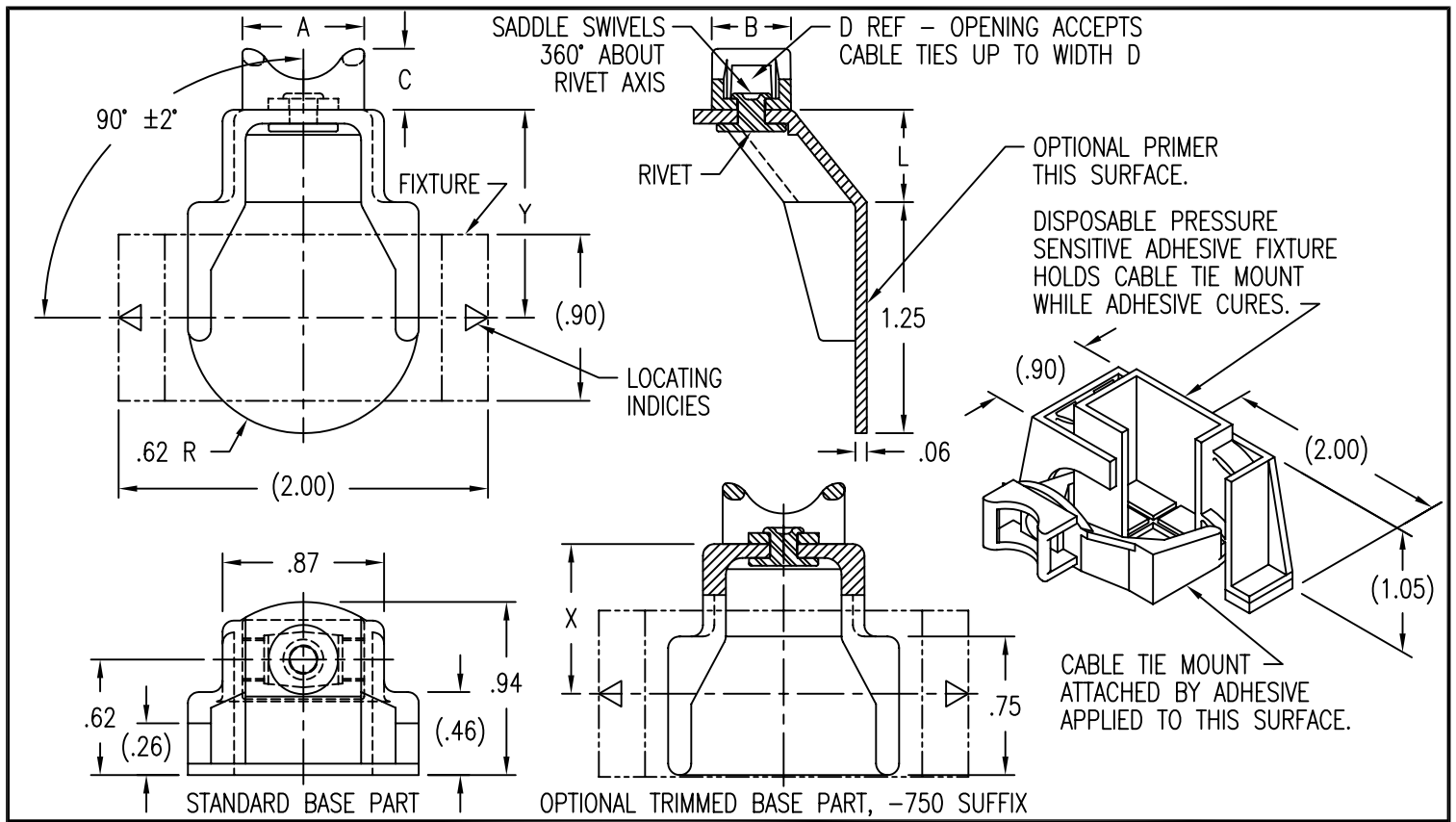
PROPRIETARY PARTS SHOWN IN THIS DRAWING ARE THE SUBJECT OF ISSUED UNITED STATES AND FOREIGN PATENTS AND PATENTS PENDING. UNAUTHORIZED REPRODUCTION AND/OR DISTRIBUTION OF THIS DRAWING IS SPECIFICALLY PROHIBITED.

GLICK BOND

CARSON CITY
NEVADA 89706

CAD CB4020-1		APPROVALS	DATE
ANGLES	±1°	DRAWN <i>DAC</i>	16DEC04
.XX	±.03	CHECKED <i>DAC/mtm</i>	16DEC04
.XXX	±.010	RELEASED <i>CGH</i>	2JAN05
.XXXX	±.001	REVISED <i>DAC</i>	16DEC04

TITLE			
MOUNT, CABLE TIE, RIGHT ANGLE, COMPOSITE			
SIZE	CAGE CODE	DWG. NO.	REV.
A	66530	CB4020	17
SCALE	1/1		16DEC04
SHEET 1 OF 2			



SADDLE MATERIAL AND FINISH DATA

CODE	MATERIAL	SPEC.	COLOR
N	NYLON, NATURAL	ASTM D4066 OR EQUAL	NATURAL
NB	NYLON, BLACK, STABILIZED	ASTM D4066 OR EQUAL	BLACK
T	FLUOROPOLYMER	TEFZEL	BLUE
V	POLYETHERIMIDE	ULTEM 1000 OR EQUAL	NATURAL

DIMENSION DATA

SIZE CODE	MAX TIE WIDTH D REF	SADDLE DIMENSIONS		
		A	B	C
2	.100	.56	.34	.27
3	.190	.67	.44	.33
5	.350	.92	.56	.42

LENGTH DATA

CODE	6	8	12	16	24
L ±.030	.375	.500	.750	1.000	1.500
X ±.015	.750	.875	1.125	1.375	1.875
Y ±.015	1.000	1.125	1.375	1.625	2.125

BASEPLATE MATERIAL

CODE	MATERIAL
U	GLASS/PEI, 30% GLASS
UC	CARBON/PEI, 30% CARBON
V	GLASS/PEI, 40% GLASS
VC	CARBON/PEI, 40% CARBON
W	GLASS/PEI, 30% GLASS, LOW HEAT RELEASE
WC	CARBON/PEI, 30% CARBON, LOW HEAT RELEASE

RIVET MATERIAL: 300 SERIES CRES OR A-286 CRES.
 RIVET FINISH: PASSIVATE PER AMS-QQ-P-35.

EXAMPLE PART NUMBER

CB4020 V 3 N 8 P 750

- OPTIONAL TRIMMED BASE
- OPTIONAL MIL-PRF-85582 EPOXY PRIMER ON BASEPLATE
- LENGTH L - .500
- SADDLE MATERIAL - NYLON
- SADDLE SIZE
- BASEPLATE MATERIAL - GLASS/PEI
- BASIC PART NUMBER

MANUFACTURER'S OPTION: 300 SERIES CRES TRIM WASHER UNDER RIVET HEAD.

UNLESS OTHERWISE SPECIFIED, ALL DIMENSIONS ARE IN INCHES AND TOLERANCES ARE AS SHOWN BELOW. DIMENSIONAL TOLERANCES AND SYMBOLS PER ANSI Y14.5M-1982.

PROPRIETARY PARTS SHOWN IN THIS DRAWING ARE THE SUBJECT OF ISSUED UNITED STATES AND FOREIGN PATENTS AND PATENTS PENDING. UNAUTHORIZED REPRODUCTION AND/OR DISTRIBUTION OF THIS DRAWING IS SPECIFICALLY PROHIBITED.



CARSON CITY NEVADA 89706

CAD CB4020-2		APPROVALS	DATE
ANGLES	±1°	DRAWN <i>DAC</i>	16DEC04
.XX	±.03	CHECKED <i>DAC/mtm</i>	16DEC04
.XXX	±.010	RELEASED <i>CGH</i>	2JAN05
.XXXX	±.001	REVISED <i>DAC</i>	16DEC04

TITLE			
MOUNT, CABLE TIE, RIGHT ANGLE, COMPOSITE			
SIZE	CAGE CODE	DWG. NO.	REV.
A	66530	CB4020	17
SCALE	1/1		16DEC04
SHEET 2		OF 2	