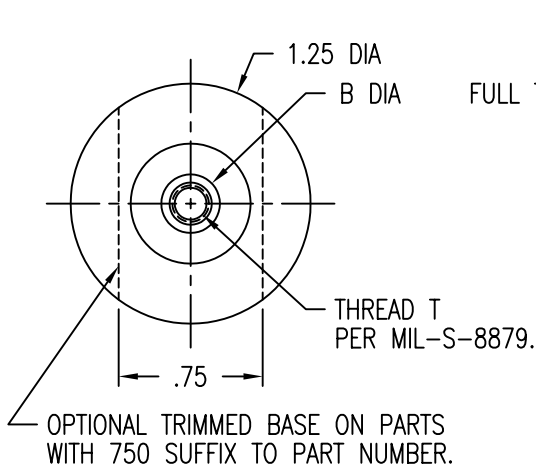
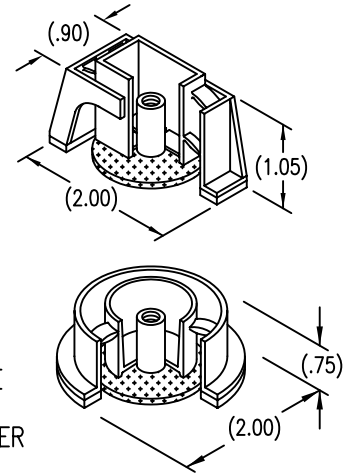
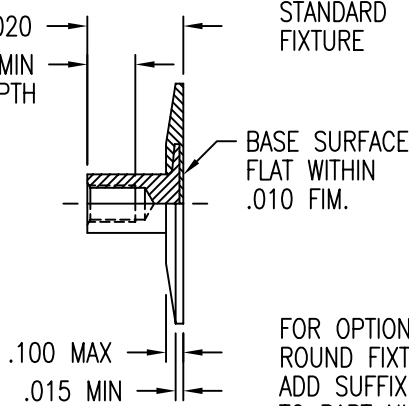


STANDOFF STRAIGHT WITHIN .004 INCH PER INCH OF LENGTH.  
 PITCH DIAMETER CONCENTRIC WITH BASE O.D. WITHIN .020 FIM.  
 PITCH DIAMETER PERPENDICULAR TO BASE WITHIN ±1 DEG.

DISPOSABLE PRESSURE SENSITIVE ADHESIVE  
 FIXTURE HOLDS STANDOFF WHILE ADHESIVE CURES.



L ±.020  
 D MIN  
 FULL THREAD DEPTH



FOR OPTIONAL  
 ROUND FIXTURE  
 ADD SUFFIX R  
 TO PART NUMBER

LENGTH L DATA (LENGTH L IN SIXTEENTHS OF AN INCH)

CODE	6	7	8	9	10	11	12	13	14	15	16	17	18	20	22	24
L	.375	.437	.500	.562	.625	.687	.750	.812	.875	.937	1.000	1.062	1.125	1.250	1.375	1.500
D MIN	.187		.250			.312										

STANDOFF MATERIAL AND FINISH DATA

CODE	STANDOFF MATERIAL	SPEC.	FINISH	SPEC.
A	2024 OR 6061	QQ-A-200, QQ-A-225, OR QQ-A-250	NONE	
AA	ALUMINUM		ANODIZE	MIL-A-8625
CR	302, 303, 304 CRES OR A-286 CRES	AMS 5513, 5516, 5636, 5637, 5638, 5639, 5640, 5641, OR 5647 AMS 5525, 5726, 5731, 5732, 5734, OR 5737 (CHEMISTRY ONLY)	PASSIVATE	QQ-P-35
CRA	A-286 CRES	AMS 5525, 5726, 5731, 5732, 5734, OR 5737 (CHEMISTRY ONLY)	PASSIVATE	QQ-P-35
T	6AL-4V TITANIUM	AMS 4911, 4928, 4965, OR 4967	NONE	

COMPOSITE MATERIAL

CODE	BASEPLATE MATERIAL
C	CARBON/EPOXY, 350°F
G	GLASS/EPOXY, 250°F
E	GLASS/EPOXY, 350°F

THREAD T DATA AND DIMENSIONS

CODE	THREAD SIZE	B DIA
06	.1380-32 UNJC-3B	.28
08	.1640-32 UNJC-3B	.31
3	.1900-32 UNJF-3B	.31

EXAMPLE PART NUMBER

CB4004 G 3 CRA 8-750



UNLESS OTHERWISE SPECIFIED, ALL DIMENSIONS ARE IN INCHES AND TOLERANCES ARE AS SHOWN BELOW. DIMENSIONAL TOLERANCES AND SYMBOLS PER ANSI Y14.5M-1982.

PROPRIETARY PARTS SHOWN IN THIS DRAWING ARE THE SUBJECT OF ISSUED UNITED STATES AND FOREIGN PATENTS AND PATENTS PENDING. UNAUTHORIZED REPRODUCTION AND/OR DISTRIBUTION OF THIS DRAWING IS SPECIFICALLY PROHIBITED.

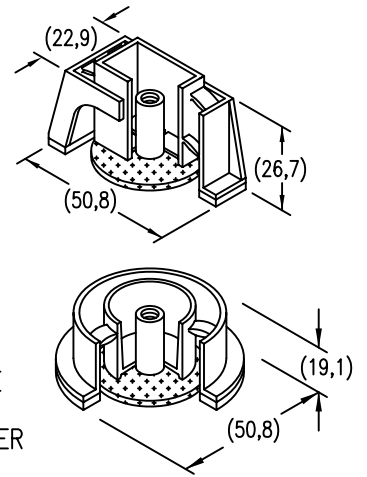
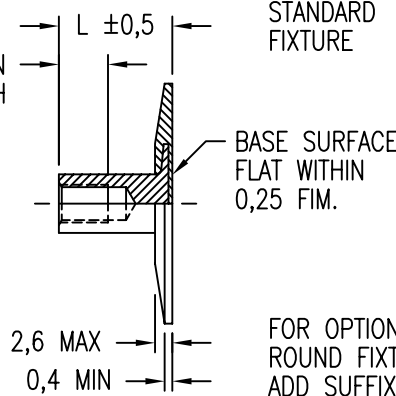
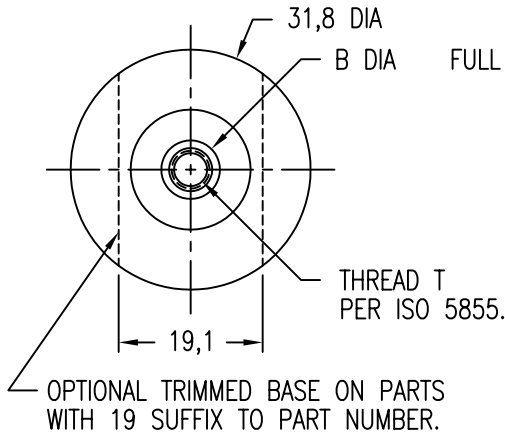
**GLICK BOND**

CARSON CITY  
 NEVADA 89706

CAD CB4004-1		APPROVALS		DATE	TITLE		
ANGLES	±1°	DRAWN	DAC	24SEP99	STANDOFF, THREADED, COMPOSITE BASE		
.XX	±.03	CHECKED	DAC	24SEP99	SIZE	CAGE CODE	DWG. NO.
.XXX	±.010	RELEASED	CGH	30CT99	A	66530	CB4004
.XXXX	±.001	REVISED	DAC	24SEP99	SCALE	1/1	24SEP99
							SHEET 1 OF 2

STANDOFF STRAIGHT WITHIN 0,004 MM PER MM OF LENGTH.  
 PITCH DIAMETER CONCENTRIC WITH BASE O.D. WITHIN 0,5 MM FIM.  
 PITCH DIAMETER PERPENDICULAR TO BASE WITHIN ±1 DEG.

DISPOSABLE PRESSURE SENSITIVE ADHESIVE  
 FIXTURE HOLDS STANDOFF WHILE ADHESIVE CURES.



FOR OPTIONAL  
 ROUND FIXTURE  
 ADD SUFFIX R  
 TO PART NUMBER

LENGTH L DATA (LENGTH L IN MILLIMETERS)

CODE	10M	12M	15M	20M	25M	30M	35M
L	10	12	15	20	25	30	35
D MIN	5,0		6,5	9,5			

STANDOFF MATERIAL AND FINISH DATA

CODE	STANDOFF MATERIAL	SPEC.	FINISH	SPEC.
A	2024 OR 6061	QQ-A-200, QQ-A-225, OR QQ-A-250	NONE	
AA	ALUMINUM		ANODIZE	MIL-A-8625
CR	302, 303, 304 CRES OR A-286 CRES	AMS 5513, 5516, 5636, 5637, 5638, 5639, 5640, 5641, OR 5647 AMS 5525, 5726, 5731, 5732, 5734, OR 5737 (CHEMISTRY ONLY)	PASSIVATE	QQ-P-35
CRA	A-286 CRES	AMS 5525, 5726, 5731, 5732, 5734, OR 5737 (CHEMISTRY ONLY)	PASSIVATE	QQ-P-35
T	6AL-4V TITANIUM	AMS 4911, 4928, 4965, OR 4967	NONE	

COMPOSITE MATERIAL

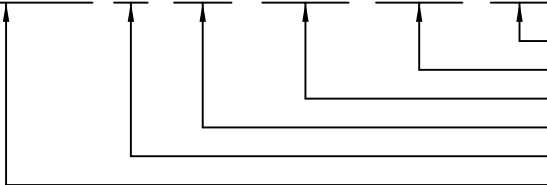
CODE	BASEPLATE MATERIAL
C	CARBON/EPOXY, 177°C
G	GLASS/EPOXY, 121°C
E	GLASS/EPOXY, 177°C

THREAD T DATA

CODE	THREAD SIZE	B DIA
3M	MJ3 X 0,5 4H6H	7,1
4M	MJ4 X 0,7 4H6H	7,9
5M	MJ5 X 0,8 4H6H	7,9

EXAMPLE PART NUMBER

CB4004 G 5M CRA 15M 19



OPTIONAL TRIMMED BASE - 19,1 MM  
 STANDOFF LENGTH L - 15 MM  
 STANDOFF MATERIAL - A-286 CRES  
 THREAD SIZE T - MJ5 X 0,8 4H6H  
 BASEPLATE MATERIAL - GLASS/EPOXY, 121°C  
 BASIC PART NUMBER

UNLESS OTHERWISE SPECIFIED, ALL DIMENSIONS ARE  
 IN MILLIMETERS AND TOLERANCES ARE AS SHOWN  
 BELOW. DIMENSIONAL TOLERANCES AND SYMBOLS  
 PER ANSI Y14.5M-1982.

PROPRIETARY PARTS SHOWN IN THIS DRAWING ARE THE SUBJECT  
 OF ISSUED UNITED STATES AND FOREIGN PATENTS AND PATENTS  
 PENDING.  
 UNAUTHORIZED REPRODUCTION AND/OR DISTRIBUTION OF THIS  
 DRAWING IS SPECIFICALLY PROHIBITED.

**GLICK BOND**

CARSON CITY  
 NEVADA 89706

CAD CB4004-2 METRIC DIMENSIONS	
ANGLES	±1°
.X	±0,8
.XX	±0,25

APPROVALS		DATE
DRAWN	DAC	24SEP99
CHECKED	DAC	24SEP99
RELEASED	CGH	30CT99
REVISED	DAC	24SEP99

TITLE STANDOFF, THREADED, COMPOSITE BASE			
SIZE	CAGE CODE	DWG. NO.	REV.
A	66530	CB4004 (METRIC)	7
SCALE	1/1	24SEP99	SHEET 2 OF 2