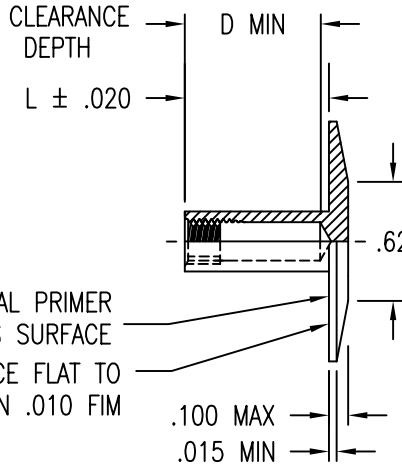
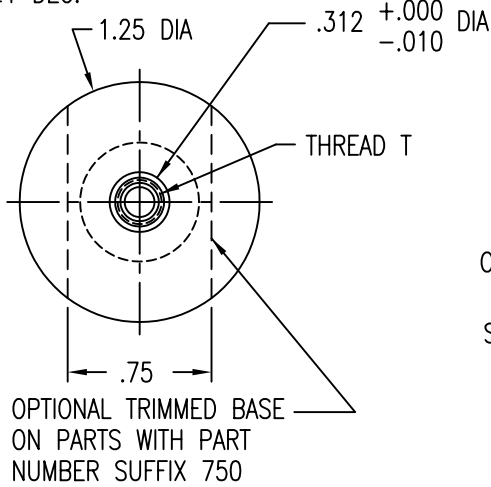
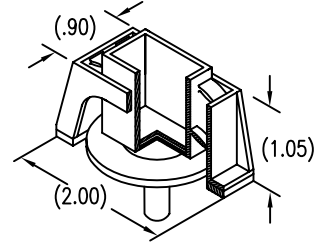


STANDOFF STRAIGHT WITHIN
.004 INCH PER INCH LENGTH.
THREAD P.D. CONCENTRIC WITH
BASE O.D. WITHIN .020 FIM.
AND PERP. TO BASE WITHIN
±1 DEG.



DISPOSABLE PRESSURE SENSITIVE ADHESIVE FIXTURE HOLDS STANDOFF WHILE ADHESIVE CURES



LENGTH L DATA (LENGTH L IN SIXTEENTHS OF AN INCH)

CODE	6	7	8	9	10	11	12	13	14	15	16	17	18	20	22	24
L	.375	.437	.500	.562	.625	.687	.750	.812	.875	.937	1.000	1.062	1.125	1.250	1.375	1.500
D MIN	.295		.400		.472											

MATERIAL AND FINISH DATA

CODE	MATERIAL	SPEC.	FINISH	SPEC.
A	2024 OR 6061	QQ-A-200, QQ-A-225, QQ-A-250	NONE	
AA	ALUMINUM		ANODIZE	MIL-A-8625
CR	302, 303, 304, OR A-286 CRES	AMS 5513, 5516, 5525, 5636, 5637, 5638, 5639, 5640, 5641, 5647, 5726, 5731, 5732, 5734, OR 5737	PASSIVATE	QQ-P-35
CRA	A-286 CRES	AMS 5525, 5726, 5731, 5732, 5734, 5737	PASSIVATE	QQ-P-35
T	6AL-4V TITANIUM	AMS 4911, 4928, 4965, OR 4967	NONE	

OPTIONAL PRIMER

CODE	BASEPLATE PRIMER	SPEC
P	EPOXY PRIMER	MIL-P-85582

THREAD T DATA

CODE	THREAD SIZE
06	.1380-32 UNC-3B
08	.1640-32 UNC-3B
3	.1900-32 UNF-3B
4	.2500-28 UNF-3B

THREAD T

MS21209 INSERT
INSTALLED PER MS33537.
LUBE PER MIL-L-46010,
TYPE 1. THREAD LOCK PER
MIL-N-25027. ACCOMMODATES
MIL-S-8879 UNJ THREAD
SCREW.

EXAMPLE PART NUMBER

CB3033 CRA 3-12 P 750

OPTIONAL TRIMMED BASE - .750
OPTIONAL PRIMER COATING ON BASEPLATE
STANDOFF LENGTH L - .750
THREAD SIZE T - .1900-32 UNF-3B
STANDOFF MATERIAL - A-286 CRES
BASIC PART NUMBER

UNLESS OTHERWISE SPECIFIED, ALL DIMENSIONS ARE IN INCHES AND TOLERANCES ARE AS SHOWN BELOW. DIMENSIONAL TOLERANCES AND SYMBOLS PER ANSI Y14.5M-1982.

PROPRIETARY PARTS SHOWN IN THIS DRAWING ARE THE SUBJECT OF ISSUED UNITED STATES AND FOREIGN PATENTS AND PATENTS PENDING. UNAUTHORIZED REPRODUCTION AND/OR DISTRIBUTION OF THIS DRAWING IS SPECIFICALLY PROHIBITED.

GLICK BOND

CARSON CITY
NEVADA 89706

APPROVALS		DATE	TITLE				
ANGLES	±1°	DRAWN MGV	13AUG96	STANDOFF, LOCKING THREAD, REVERSE MOUNTED			
.XX	±.03	CHECKED DAC	13AUG96	SIZE	CAGE CODE	DWG. NO.	REV.
.XXX	±.010	RELEASED CGH	13AUG96	A	66530	CB3033	0
.XXXX	±.001	REVISED		SCALE	1/1	13AUG96	SHEET 1 OF 1