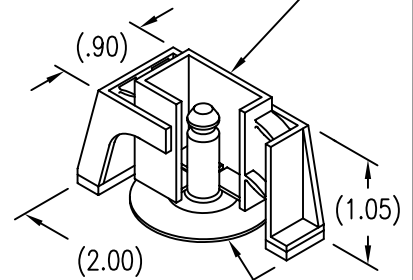
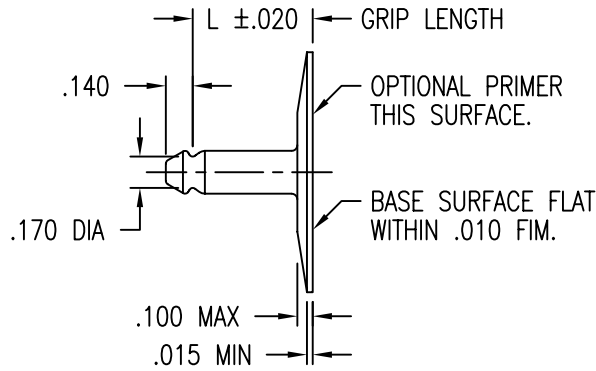
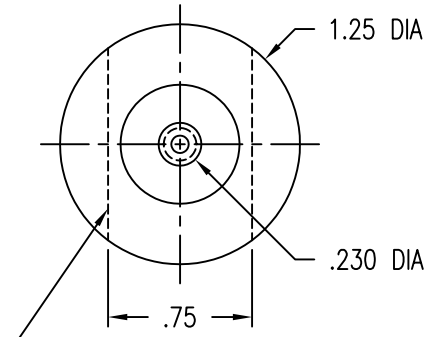


STUD STRAIGHT WITHIN .004 INCH PER INCH OF LENGTH.

DISPOSABLE PRESSURE SENSITIVE ADHESIVE FIXTURE HOLDS STUD WHILE ADHESIVE CURES.



NOTE: TO OPERATE WITH MS27977 SOCKET. ALL DIMENSIONS BEFORE PRIMER.

GRIP LENGTH L DATA

CODE	4	6	8	10
L	.250	.375	.500	.625

MATERIAL AND FINISH DATA

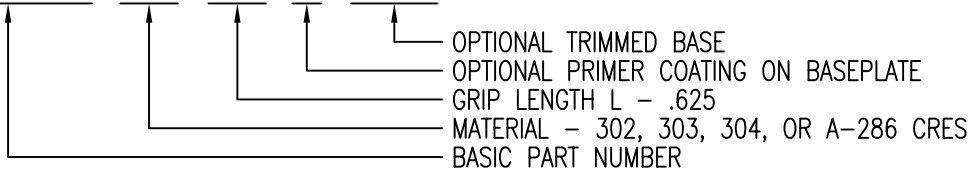
CODE	STUD MATERIAL	SPEC.	FINISH	SPEC.
CR	302, 303, 304 CRES OR A-286 CRES	AMS 5513, 5516, 5636, 5637, 5638, 5639, 5640, 5641, OR 5647 AMS 5525, 5726, 5731, 5732, 5734, OR 5737 (CHEMISTRY ONLY)	PASSIVATE	QQ-P-35
T	6AL-4V TITANIUM	AMS 4911, 4928, 4965, OR 4967	NONE	

OPTIONAL PRIMER

CODE	BASEPLATE PRIMER	SPEC.
P	EPOXY PRIMER	MIL-P-85582
W	FILM PRIMER	CBPS 211

EXAMPLE PART NUMBER

CB3003 CR 10 W 750



UNLESS OTHERWISE SPECIFIED, ALL DIMENSIONS ARE IN INCHES AND TOLERANCES ARE AS SHOWN BELOW. DIMENSIONAL TOLERANCES AND SYMBOLS PER ANSI Y14.5M-1982.

PROPRIETARY PARTS SHOWN IN THIS DRAWING ARE THE SUBJECT OF ISSUED UNITED STATES AND FOREIGN PATENTS AND PATENTS PENDING. UNAUTHORIZED REPRODUCTION AND/OR DISTRIBUTION OF THIS DRAWING IS SPECIFICALLY PROHIBITED.

**GLICK BOND**

CARSON CITY  
NEVADA 89706

APPROVALS		DATE	TITLE			
ANGLES	±1°	DRAWN <i>DAC</i>	8FEB03	SNAP STUD, ADHESIVE BONDED		
.XX	±.03	CHECKED <i>DAC/mt</i>	8FEB03	SIZE	CAGE CODE	DWG. NO.
.XXX	±.010	RELEASED <i>CGH</i>	8FEB03	A	66530	CB3003
.XXXX	±.001	REVISED <i>DAC</i>	8FEB03	SCALE	1/1	8FEB03
						SHEET 1 OF 1