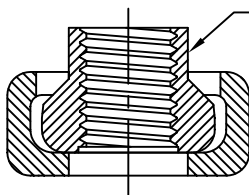
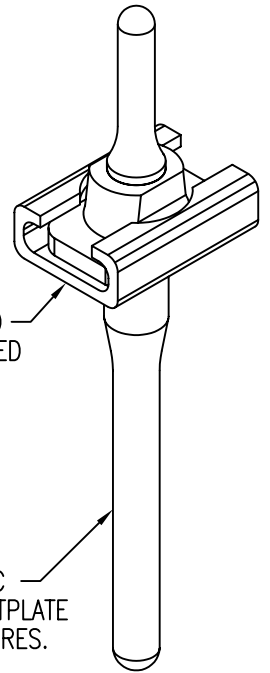
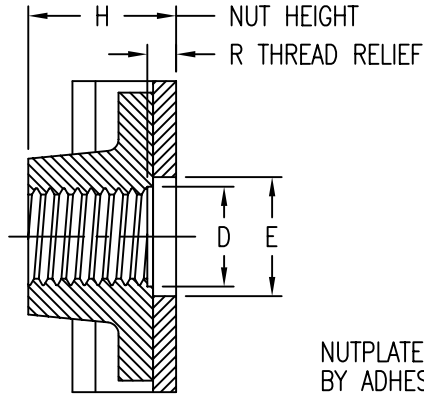


THREAD T PER MIL-S-8879. THREAD LOCK BY MODIFIED THREAD FORM.

RADIAL FLOAT OF NUT .030 FROM CENTER.



NUT CAN BE REMOVED AND REPLACED BY SLIDING NUT FROM RETAINER.



NUTPLATE ATTACHED BY ADHESIVE APPLIED TO THIS SURFACE.

DISPOSABLE ELASTIC FIXTURE HOLDS NUTPLATE WHILE ADHESIVE CURES.

THREAD AND DIMENSION DATA

CODE	THREAD SIZE T	A MAX	B MAX	D MIN	E MIN	H MAX	R MIN
4	.2500-28 UNJF-3B	.850	.635	.255	.305	.400	.062

BASEPLATE MATERIAL DATA

CODE	MATERIAL	FINISH
V	POLYETHERIMIDE/GLASS	ABRASIVE CLEAN

NUT MATERIAL DATA

CODE	MATERIAL
V	POLYETHERIMIDE/GLASS

CB1509 V 4

THREAD SIZE - .2500-28 UNJF-3B
NUT AND BASEPLATE MATERIAL - POLYETHERIMIDE/GLASS
BASIC PART NUMBER

UNLESS OTHERWISE SPECIFIED, ALL DIMENSIONS ARE IN INCHES AND TOLERANCES ARE AS SHOWN BELOW. DIMENSIONAL TOLERANCES AND SYMBOLS PER ANSI Y14.5M-1982.

PROPRIETARY PARTS SHOWN IN THIS DRAWING ARE THE SUBJECT OF ISSUED UNITED STATES AND FOREIGN PATENTS AND PATENTS PENDING. UNAUTHORIZED REPRODUCTION AND/OR DISTRIBUTION OF THIS DRAWING IS SPECIFICALLY PROHIBITED.

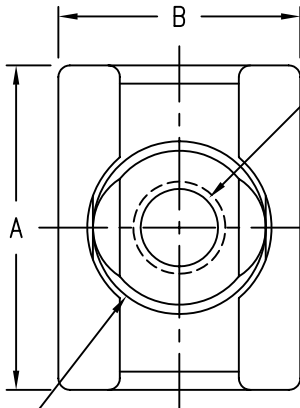
GLICK BOND

CARSON CITY
NEVADA 89706

CAD CB1509-1

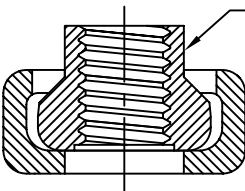
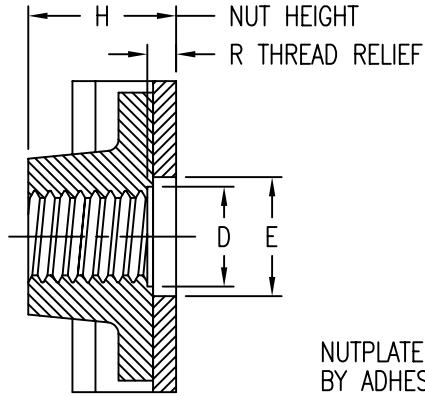
APPROVALS	DATE
DRAWN BPEREZ	9JUL03
CHECKED DOC	9JUL03
RELEASED CGH	11JUL03
REVISED	

TITLE			
NUTPLATE, COMPOSITE, ADHESIVE BONDED			
SIZE	CAGE CODE	DWG. NO.	REV.
A	66530	CB1509	0
SCALE	2/1	9JUL03	SHEET 1 OF 2

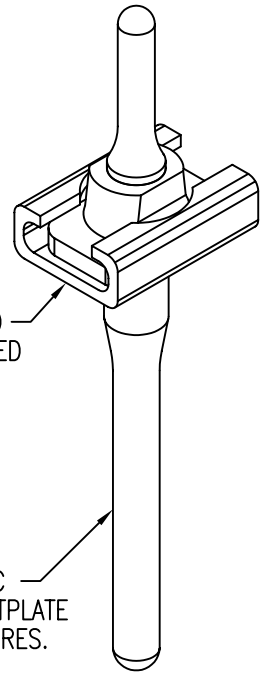


THREAD T.
THREAD LOCK
BY MODIFIED
THREAD FORM.

RADIAL FLOAT OF NUT
0,75 FROM CENTER.



NUT CAN BE REMOVED AND REPLACED
BY SLIDING NUT FROM RETAINER.



NUTPLATE ATTACHED
BY ADHESIVE APPLIED
TO THIS SURFACE.

DISPOSABLE ELASTIC
FIXTURE HOLDS NUTPLATE
WHILE ADHESIVE CURES.

THREAD AND DIMENSION DATA

CODE	THREAD SIZE T	A MAX	B MAX	D MIN	E MIN	H MAX	R MIN
6M	M6 X 1,0 4H5H	21,6	16,2	6,1	7,4	10,2	1,5

BASEPLATE MATERIAL DATA

CODE	MATERIAL	FINISH
V	POLYETHERIMIDE/GLASS	ABRASIVE CLEAN

NUT MATERIAL DATA

CODE	MATERIAL
V	POLYETHERIMIDE/GLASS

CB1509 V 6M

THREAD SIZE - M6 x 1,0 4H5H
NUT AND BASEPLATE MATERIAL - POLYETHERIMIDE/GLASS
BASIC PART NUMBER

UNLESS OTHERWISE SPECIFIED, ALL DIMENSIONS ARE IN MILLIMETERS AND TOLERANCES ARE AS SHOWN BELOW. DIMENSIONAL TOLERANCES AND SYMBOLS PER ANSI Y14.5M-1982.

PROPRIETARY PARTS SHOWN IN THIS DRAWING ARE THE SUBJECT OF ISSUED UNITED STATES AND FOREIGN PATENTS AND PATENTS PENDING. UNAUTHORIZED REPRODUCTION AND/OR DISTRIBUTION OF THIS DRAWING IS SPECIFICALLY PROHIBITED.



CARSON CITY
NEVADA 89706

CAD CB1509-2 METRIC DIMENSIONS	
ANGLES	±1°
.X	±0,8
.XX	±0,25

APPROVALS	DATE
DRAWN BPEREZ	11JUL03
CHECKED DOC	11JUL03
RELEASED CGH	11JUL03
REVISED	

TITLE NUTPLATE, COMPOSITE, ADHESIVE BONDED			
SIZE A	CAGE CODE 66530	DWG. NO. CB1509 (METRIC)	REV. 0
SCALE 2/1	11JUL03		SHEET 2 OF 2