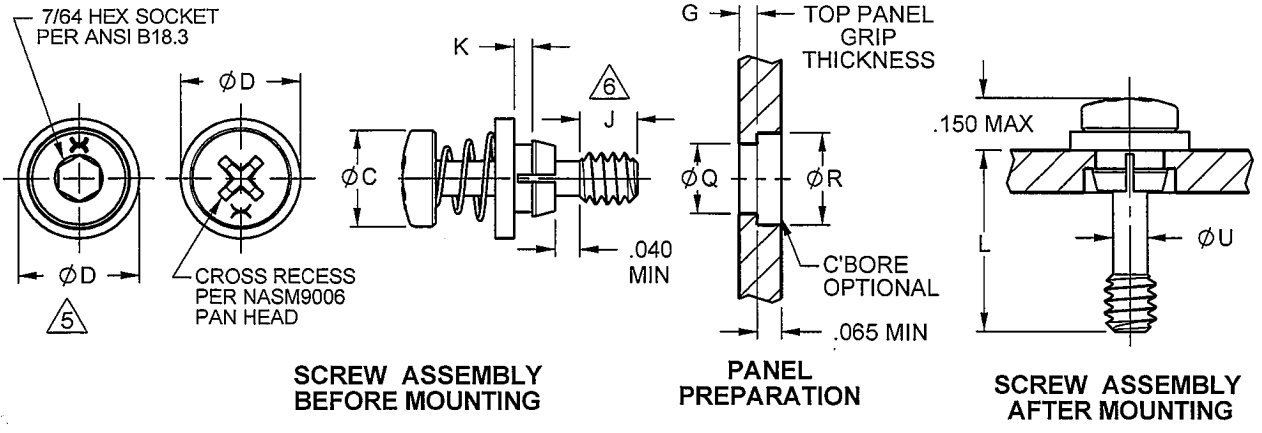


ORIGINAL  
Red Ink Indicates  
Original Copy

REV **N**  
**S-2825**  
DRAWING NO.

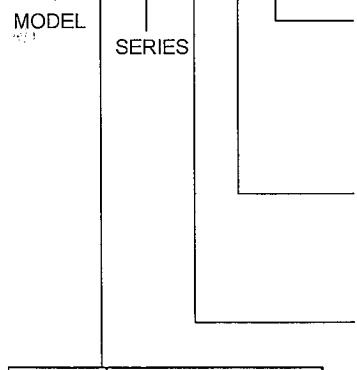
THIS DRAWING, THE STRUCTURAL DESIGN DISCLOSED THEREIN, THE TECHNICAL DATA AND ENGINEERING SERVICE REPRESENTED THEREBY ARE THE EXCLUSIVE PROPERTY OF HUCK INTERNATIONAL, INC.



THREAD SIZE CODE	Ø C MAX	Ø D ±.010	Ø Q +.004 - .001	Ø R +.020 - .000	Ø U +.005 - .000
4	.219	.250	.162	.206	.075
6	.270	.325	.190	.219	.090
8	.322	.375	.228	.250	.117

**PART NUMBER CALLOUT**

CFB ( ) 7950 ( ) - ( ) - ( ) - ( )



LENGTH CODE	L
6.5	.375
7	.425
8	.500
8.3	.530
8.5	.550
9	.562
10	.625
17	1.062

GRIP CODE	G TOP PANEL GRIP THICKNESS	K +.010 - .000
A	.031-.049	.050
B	.050-.075	.076
C	.076-.105	.106

THREAD SIZE CODE	THREAD SIZE PER ASME B1.1
4	.112-40 UNC-3A
6	.138-32 UNC-3A
8	.164-32 UNC-3A

MATERIAL CODE	SCREW MATERIAL
NONE	302 CRES
L	A-286 CRES

THREAD LENGTH CODE	J THREAD SIZE		
	4	6	8
A	.155	.250	.250
T	.250	.155	N/A
N	N/A	.500	N/A
R	N/A	.250	N/A

SIZE 8 AVAILABILITY	
A	7 OR LONGER
B	8 OR LONGER
C	8.3 OR LONGER

**NOTES:**

- SCREW HAS .015 TOTAL FLOAT
- THIS LENGTH IS ONLY AVAILABLE FOR CFBA7950( )-4 AND CFBT 7950( )-6.
- SEE TABLE FOR SIZE 8 AVAILABILITY.
- 17 LENGTH ONLY.
- THIS HEAD STYLE IS ONLY AVAILABLE FOR CFBR7950(L)-6.
- SPECIFIED THREAD LENGTH AVAILABILITY LIMITED BY SLEEVE GRIP/STUD LENGTH COMBINATION.

**MATERIAL:**

**SCREW:**  
CFB( )7950: 302 CRES PER ASTM-A-493 OR AMS 5636

CFB( )7950L: A-286 CRES PER AMS 5732 OR AMS 5737, HEAT TREAT TO 160KSI MIN. U.T.S

**SLEEVE:**  
7075-T6 OR 7075-T4 ALUMINUM ALLOY PER AMS 4122 OR AMS QQ-A-225/9

**SPRING:**  
302 CRES PER AMS 5688 OR ASTM-A-313

**FINISH:**

CFB( )7950(L) EXCEPT CFBR7950(L):

**SCREW:** BLACK OXIDE PER MIL-DTL-13924, CLASS 3 (A-286) OR CLASS 4 (302)

**SLEEVE:** BLACK ANODIZE PER MIL-A-8625, TYPE II, CLASS 2

**SPRING:** BLACK OXIDE PER MIL-DTL-13924, CLASS 4

CFBR7950, CFBR7950L:

**SCREW & SPRING:** PASSIVATE PER AMS2700.

**SLEEVE:** BLACK ANODIZE PER MIL-A-8625, TYPE II, CLASS 2

N	DCN 9123	08-16-10
REV	DESCRIPTION/EC NO.	DATE

UNLESS OTHERWISE SPECIFIED ALL DIMENSIONS IN INCHES

TOLERANCE UNLESS OTHERWISE NOTED:  
X = ±.05      ANGLES ±0.5°  
XX = ±.02  
XXX = ±.015

**Alcoa Fastening Systems**

CURRENT DESIGN ACTIVITY PER CAGE CODE 0HDW7  
AFS TUCSON OPERATIONS  
3724 EAST COLUMBIA STREET  
TUCSON, ARIZONA 85714  
PHONE 520 519-7400  
FAX 520 519-7427  
www.alcoafasteners.com

TITLE <b>CAPTIVE SCREW, SNAP-IN, FLOATING, SPRING-LOADED, OPTIONAL RECESS, LIPPED SLEEVE</b>			
DATE 02-10-06	PART NUMBER <b>CFB( )7950</b>		
DRAWN J. SCHLOBOHM	SIGNER INITIALS JC	DRAWING NO. <b>S-2825</b>	
CHECK J. CALLAWAY	CAGE CODE 0HDW7	REV N	
APPROVE J. HEIN	SCALE: 2:1	SHEET 1 OF 1	