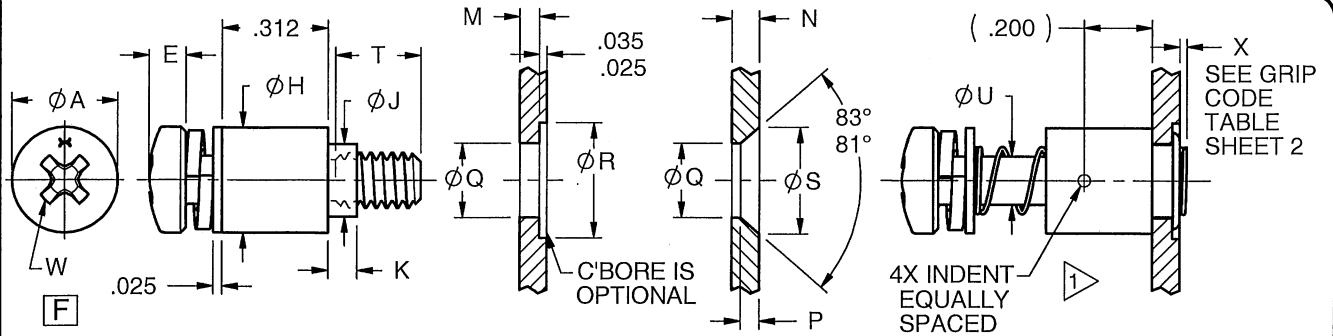


**ORIGINAL**  
**Red Ink Industries**  
**Original Copy**

REV **HH**

**S-2374**

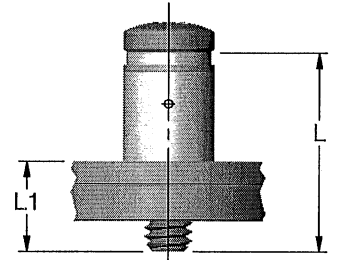
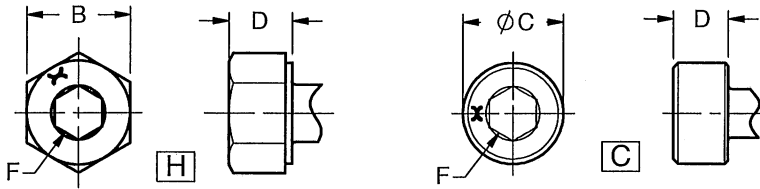
DRAWING NO.



**ASSEMBLY BEFORE MOUNTING**

**PANEL PREPARATION**

**ASSEMBLY AFTER MOUNTING**



**ASSEMBLY AFTER MOUNTING**

THREAD SIZE CODE	Ø A	B ±.004	C	D	E	F	Ø H ±.010	Ø J ±.005	Ø Q +.004 - .001	Ø R +.020 - .000	Ø S +.004 - .001	T	Ø U	W
4	.212	.185	.180	.110	.075	3/32	.219	.178	.187	.281	.248		.067-.072	4
6	.263	.247	.222	.136	.092	7/64	.265	.202	.209	.312	.287	.203	.090-.095	6
8	.314		.266	.162	.110	9/64	.312	.215	.221	.343	.317		.126-.129	8
10	.365	.309	.308	.187	.128	5/32	.365	.250	.257	.375	.353	.250	.153-.157	10
12	.482	.371	.370	.247	.168	3/16	.437	.313	.323	.437	.431	.281	.210-.213	1/4

LENGTH CODE	L				L1 ±.020	LENGTH CODE	L				L1 ±.020	
	4	6	8	10			4	6	8	10		12
1	.612	.618			NA	6	.924	.930	.939	.946	.961	.562
2	.674	.680	.690	.697	.712	6.5	.956	.962	.970	.977	.993	.594
2.5	.705	.712	.720	.728	.743	7	.987	.993	1.002	1.009	1.024	.625
3	.737	.743	.752	.759	.774	7.5	1.018	1.024	1.033	1.040	1.055	.656
3.5	.768	.774	.783	.790	.805	8	1.049	1.055	1.064	1.071	1.086	.687
4	.799	.805	.814	.821	.836	8.5	1.080	1.086	1.095	1.102	1.117	.718
4.5	.831	.837	.845	.852	.868	9	1.112	1.118	1.127	1.134	1.149	.750
5	.862	.868	.877	.884	.899	9.5	1.143	1.149	1.158	1.165	1.180	.781
5.5	.893	.899	.908	.915	.930	10	1.174	1.180	1.189	1.197	1.211	.812

**PART NUMBER CALLOUT**

( ) LW 7900 ( ) - ( ) - ( ) - ( )

MODEL

SERIES



MATL CODE	TYPE
NONE	302
L	A-286

GRIP CODE	M	N	K ±.005	P MAX					GRIP CODE	M	N	K ±.005	P MAX						
				4	6	8	10	12					4	6	8	10	12		
AA	NA	.055-.070	.065	.030					DD	NA	.231-.255	.240							
A	.020-.031	.071-.105	.085						D	.188-.250	.256-.305	.272							
BB	.041-.093	.106-.134	.116						EE	NA	.306-.325	.303	.035	.045	.055	.062			
B	.063-.125	.135-.160	.147	.035	.045	.055	.062		E	.251-.312	.326-.355	.335							
CC	NA	.161-.195	.178						FF	NA	.356-.380	.365							
C	.126-.187	.196-.230	.210						F	.313-.375	.381-.425	.397							

THREAD SIZE CODE	THREAD SIZE PER ASME B1.1	LEAD	THREAD SIZE CODE	THREAD SIZE PER ASME B1.1	LEAD
4	.112-40 UNC-2A	SINGLE	4F	.112-40 UNC-2A	DOUBLE
6	.138-32 UNC-2A		6F	.138-32 UNC-2A	
8	.164-32 UNC-2A		8F	.164-32 UNC-2A	
10	.190-32 UNF-2A	QUAD	10F	.190-32 UNF-2A	
12	.250-28 UNF-2A		12F	.250-28 UNF-2A	

RECESS CODE	DRIVING RECESS AND SPECIFICATION
C	HEX SOCKET HEAD PER ANSIB18.6
F	CROSS RECESS PER NASM 9006
H	HEX HEAD/RECESS PER ANSIB18.6

REV	DESCRIPTION/EC NO.	DATE
HH	DCN 4250	05-03-06

UNLESS OTHERWISE SPECIFIED ALL DIMENSIONS IN INCHES

TOLERANCE UNLESS OTHERWISE NOTED:  
 X = ±.05      ANGLES ±0.5°  
 XX = ±.02  
 XXX = ±.015

**Alcoa Fastening Systems**  
 AEROSPACE FASTENER DIVISION  
 3724 EAST COLUMBIA STREET  
 TUCSON, ARIZONA 85714  
 PHONE 520 519-7400  
 FAX 520 519-7427  
 www.alcofasteners.com

TITLE	
<b>CAPTIVE SCREW, INTERNAL FLOAT, HIGH PROFILE, SPRING-LOADED, FIXED THREAD LENGTH</b>	
DATE 10/06/2004	PART NUMBER ( )LW7900
DRAWN JLS	DRAWING NO. <b>S-2374</b>
CHECK <i>[Signature]</i>	CAGE CODE OHDW7
APPROVE	REV <b>HH</b>
SCALE: 1.75:1      SHEET 1 OF 2	

THIS DRAWING, THE STRUCTURAL DESIGN DISCLOSED THEREIN, THE TECHNICAL DATA AND ENGINEERING SERVICE REPRESENTED THEREBY ARE THE EXCLUSIVE PROPERTY OF HUCK INTERNATIONAL, INC.

**ORIGINAL**  
 Red Ink Indicates  
**Original Copy**

REV **HH**

**S-2374**

DRAWING NO.

THREAD CODE	GRIP CODE											
	X			X IS NOT APPLICABLE								
	AA	A	BB	B	CC	C	DD	D	EE	E	FF	F
4	.063	.048	.030	FULLY RETRACTABLE								
6												
8	.070	.050										
10												
12												

ASSEMBLIES NOT AVAILABLE

**MATERIAL**

**STUD:**

NONE: 302 CRES PER AMS 5636 OR ASTM-A-493  
 L: A-286 CRES PER AMS 5737, H.T TO 160 KSI MIN.

SLEEVE: 6061-T6 ALUM PER AMS 4117 AND AMS-QQ-A-225/8

SPRING: 302 CRES PER AMS 5688 OR ASTM-A-313

FLAT WASHER: 300 SERIES CRES PER MIL-S-5059, AMS 5517, OR EQUIV.

LOCK WASHER: 300 SERIES CRES PER ASME B18.21.1

BUSHING: 7075 ALUM PER AMS 4122 OR AMS-QQ-A-225/9

**FINISH**

BUSHING: ANODIZE PER MIL-A-8625, TYPE II, CLASS 2 DYED RED.

SLEEVE: ANODIZE PER MIL-A-8625, TYPE II, CLASS 1.

ALL OTHER COMPONENTS: PASSIVATE PER AMS QQ-P-35

**NOTES:**

-  SOME ASSEMBLIES DO NOT REQUIRE A BUSHING OR TO BE INDENTED.
-  FOR LONGER ASSEMBLIES CONTACT ENGINEERING DEPARTMENT.

**INSTALLATION TOOLS**

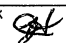
( ) INDICATES THREAD SIZE CODE

HANDLE	PULLER	NOSE PIECE		ARBOR PRESS TOOL	
		C'SINK	C'BORE	C'SINK	C'BORE
TA7533	HP7523-( )	HNG7513-( )	HN7513-( )	DW7600-( )	HW7600-( )

THIS DRAWING, THE STRUCTURAL DESIGN DISCLOSED THEREIN, THE TECHNICAL DATA AND ENGINEERING SERVICE REPRESENTED THEREBY ARE THE EXCLUSIVE PROPERTY OF HUCK INTERNATIONAL, INC.

HH	DCN 4250	05-03-06
REV	DESCRIPTION/EC NO.	DATE
UNLESS OTHERWISE SPECIFIED ALL DIMENSIONS IN INCHES		
TOLERANCE UNLESS OTHERWISE NOTED:		
X	= ±.05	ANGLES ±0.5°
.XX	= ±.02	
.XXX	= ±.015	


**Alcoa Fastening Systems**  
 AEROSPACE FASTENER DIVISION  
 3724 EAST COLUMBIA STREET  
 TUCSON, ARIZONA 85714  
 PHONE 520 519-7400  
 FAX 520 519-7427  
[www.alcoafasteners.com](http://www.alcoafasteners.com)

TITLE			
<b>CAPTIVE SCREW, INTERNAL FLOAT, HIGH PROFILE, SPRING-LOADED, FIXED THREAD LENGTH</b>			
DATE	PART NUMBER		
10/06/2004	( )LW7900		
DRAWN	DRAWING NO.		
JLS	S-2374		
CHECK	CAGE CODE	REV	
	OHDW7	HH	
APPROVE	SCALE: 1:1	SHEET 2 OF 2	