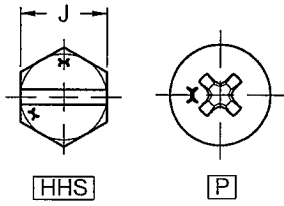
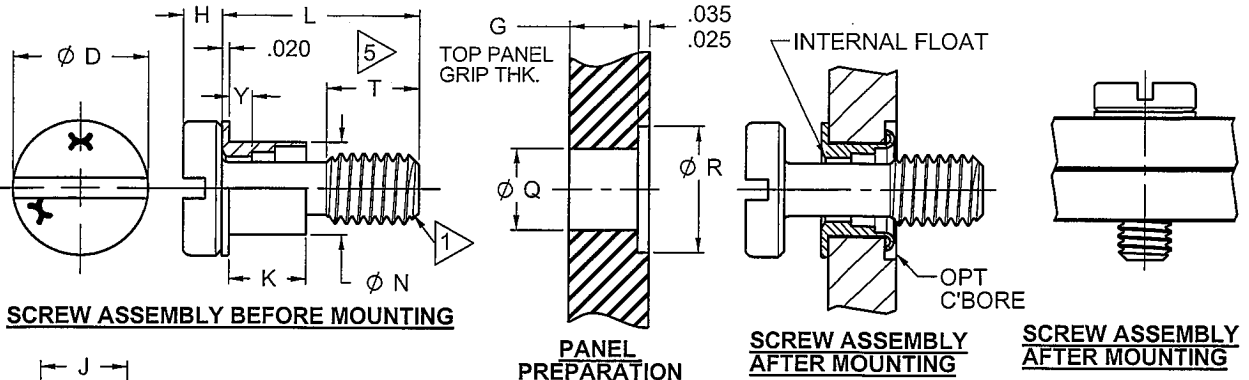


REV R  
S-1860

DRAWING NO.



PART NUMBER CALLOUT

FDC ( ) ( ) 7900 ( ) ( ) ( ) ( ) ( ) ( )

THREAD SIZE CODE	ØD	H			J ±.003	ØN ±.005	ØQ +.004 -.001	ØR +.020 -.000	T
		HHS	SLOT	P					
4, 4F	.212	.054	.063	.075	.185	.178	.187	.312	.203
6, 6F	.264	.086	.077	.092	.247	.202	.213	.332	
8, 8F	.314	.103	.090	.110	.247	.215	.228	.348	
10, 10C, 10F	.365	.112	.104	.127	.309	.250	.257	.375	.250
12, 12C, 12F	.482	.181	.137	.168	.372	.313	.323	.437	.281

LENGTH CODE	L
1	.285
2	.410
3	.535
4	.660
5	.785
6	.910

GRIP CODE	G (TOP PANEL GRIP THK)		K	Y
	A	B		
A	.031-.062	.085	.020	.062
B	.063-.125	.147		
C	.126-.187	.210		
D	.188-.250	.272		
E	.251-.312	.335		
F	.313-.375	.397		

THREAD SIZE CODE	TOTAL FLOAT
4, 4F	.017-.025
6, 6F	.023-.030
8, 8F	.024-.031
10, 10C, 10F	.027-.034
12, 12C, 12F	.041-.050

MODEL  
SERIES

THREAD SIZE CODE	THREAD SIZE PER ASME B1.1	LEAD	THREAD SIZE CODE	THREAD SIZE PER ASME B1.1	LEAD
4	.112-40 UNC-2A	SINGLE	4F	.112-40 UNC-2A	DOUBLE
6	.138-32 UNC-2A		6F	.138-32 UNC-2A	
8	.164-32 UNC-2A		8F	.164-32 UNC-2A	
10	.190-32 UNF-2A	SINGLE (COARSE)	10F	.190-32 UNF-2A	QUAD
12	.250-28 UNF-2A		12F	.250-28 UNF-2A	
10C	.190-24 UNC-2A				
12C	.250-20 UNC-2A				

MATERIAL CODE	ASSEMBLY MATERIAL
NONE	STANDARD
L	ALL CRES

RECESS CODE	DRIVING RECESS AND SPECIFICATION
	SLOT RECESS PER ANSI B18.6.3
HHS	HEX HEAD SLOT RECESS PER ANSI B18.6.3
P	CROSS RECESS PER NASM 9006

CODE	FINISH
NONE	CLEAR
E	BLACK

THREAD CLASS CODE	CLASS OPTION PER ASME B1.1
NONE	CLASS 2A
G	CLASS 3A

THIS DRAWING, THE STRUCTURAL DESIGN DISCLOSED THEREIN, THE TECHNICAL DATA AND ENGINEERING SERVICE REPRESENTED THEREBY ARE THE EXCLUSIVE PROPERTY OF HUCK INTERNATIONAL, INC.

ORIGINAL Red Ink indicates Original Copy

R	DCN 7495	03-10-09
REV	DESCRIPTION/EC NO.	DATE
UNLESS OTHERWISE SPECIFIED ALL DIMENSIONS IN INCHES		
TOLERANCE UNLESS OTHERWISE NOTED:		
X	= ±.05	ANGLES ±0.5°
.XX	= ±.02	
.XXX	= ±.015	

**ALCOA**  
**Alcoa Fastening Systems**  
 AEROSPACE FASTENER DIVISION  
 3724 EAST COLUMBIA STREET  
 TUCSON, ARIZONA 85714  
 PHONE 520 519-7400  
 FAX 520 519-7427  
 www.alcofasteners.com

TITLE <b>CAPTIVE SCREW, INTERNAL FLOATING, OPT HEAD, OPT RECESS, FIXED THREAD LENGTH</b>	
DATE 02-24-05	PART NUMBER <b>FDC( )7900</b>
DRAWN JLS	DRAWING NO. <b>S-1860</b>
CHECK	CAGE CODE 0HDW7
APPROVE	REV <b>R</b>
SCALE: 2:1	SHEET 1 OF 2

**ORIGINAL**  
 Red Ink Indicates  
 Original Copy

THIS DRAWING, THE STRUCTURAL DESIGN DISCLOSED THEREIN, THE TECHNICAL DATA AND ENGINEERING SERVICE REPRESENTED THEREBY ARE THE EXCLUSIVE PROPERTY OF HUCK INTERNATIONAL, INC.

DRAWING NO.

**S-1860**

REV **R**

THREAD LENGTH AVAILABILITY TABLE																		
GRIP CODE	4, 4F, 6, 6F						8, 8F, 10, 10C, 10F						12, 12C, 12F					
	1	2	3	4	5	6	1	2	3	4	5	6	1	2	3	4	5	6
A	.140						.140						.140	.265				
B								.203						.203				
C		.140						.140							.265			
D									.203						.203			
E			.140						.140								.265	
F										.203							.203	

ASSEMBLIES NOT AVAILABLE

PART	PART NUMBER	MAT'L CODE	THREAD SIZE	MATERIAL	FINISH
STUD	FDC	NONE	4 & 6	4037 ALLOY STEEL PER AMS 6300 OR 8740 ALLOY STEEL PER AMS 6322, HEAT TREAT TO HRC 34-38	CAD PLATE PER AMS QQ-P-416, TYPE I, CLASS 2
	FDCE				BLACK OXIDE PER MIL-C-13924, CLASS 1
	FDC	L	8, 10, 12	302 CRES PER AMS 5636 OR ASTM-A-493	PASSIVATE PER AMS QQ-P-35
	FDCE				BLACK OXIDE PER MIL-C-13924, CLASS 4
	FDC	L	ALL SIZES	A-286 CRES PER AMS 5732, 5737, HEAT TREAT TO 160 KSI ULTIMATE TENSILE STRENGTH	PASSIVATE PER AMS QQ-P-35
	FDCE				BLACK OXIDE PER MIL-C-13924, CLASS 3
SLEEVE	FDC	NONE	4 & 6	COMMERCIAL BRASS PER AMS 4610, ASTM B 16/B 16M, OR EQUIVALENT	CAD PLATE PER AMS QQ-P-416, TYPE I, CLASS 2
	FDCE				BLACK ANODIZE PER MIL-A-8625, TYPE II, CLASS 2 COPPER STRIKE (EBONAL "C")
	FDC	L	8, 10, 12	6061 ALUMINUM ALLOY PER AMS 4117, AMS QQ-A-225/8, OR EQUIVALENT	ANODIZE PER MIL-A-8625, TYPE II, CLASS 1
	FDCE				BLACK ANODIZE PER MIL-A-8625, TYPE II, CLASS 2
	FDC	L	ALL SIZES	304 CRES PER AMS 5639 OR AMS-QQ-S-763 OR EQUIVALENT	PASSIVATE PER AMS QQ-P-35
	FDCE				BLACK OXIDE PER MIL-C-13924, CLASS 4

**NOTES:**

- 1) LETTERS AT THE END OF PART NUMBER DESIGNATE SPECIAL ASSEMBLIES:  
DL - ASSEMBLIES WITH DRI LUBE THREADS PER MIL-PRF-46010  
PL - ASSEMBLIES WITH PATCH LOCK PER MIL-DTL-18240
- 2) .335 FOR SIZE 12.
- 3) NO CODE REQUIRED FOR SLOTTED HEADS.
- 4) FOR LONGER LENGTHS "L", ADD .125 INCREMENTS PER LENGTH CODE.
- 5) SEE APPROPRIATE THREAD LENGTH AVAILABILITY TABLE FOR "T" DIMENSION.
- 6) HAND TOOL IS NOT RECOMMENDED FOR USE ON THREAD SIZES 4, 4F, 6, 6F.

INSTALLATION TOOLS: ( ) INDICATES THREAD SIZE CODE

ARBOR PRESS TOOL HW7600-( ), NOSE PIECE HN7513-( ), PULLER HP7523-( ), HANDLE ASSEMBLY TA7533  
 COMPLETE HANDLE TOOL ASSEMBLY: H8603-( ) INCLUDES NOSE PIECE, PULLER & HANDLE

R	DCN 7495	03-10-09	<b>Alcoa Fastening Systems</b> AEROSPACE FASTENER DIVISION 3724 EAST COLUMBIA STREET TUCSON, ARIZONA 85714 PHONE 520 519-7400 FAX 520 519-7427 www.alcoafasteners.com	TITLE <b>CAPTIVE SCREW, INTERNAL FLOATING, OPT HEAD, OPT RECESS, FIXED THREAD LENGTH</b>	
REV	DESCRIPTION/EC NO.	DATE		DATE 02-24-05	PART NUMBER <b>FDC( )7900</b>
UNLESS OTHERWISE SPECIFIED ALL DIMENSIONS IN INCHES TOLERANCE UNLESS OTHERWISE NOTED: X = ±.05      ANGLES ±0.5° XX = ±.02 XXX = ±.015			DRAWN JLS	DRAWING NO. <b>S-1860</b>	
			CHECK I. SANTOS	CAGE CODE 0HDW7	REV <b>R</b>
			APPROVE J. HEIN	SCALE: 1:1	SHEET 2 OF 2