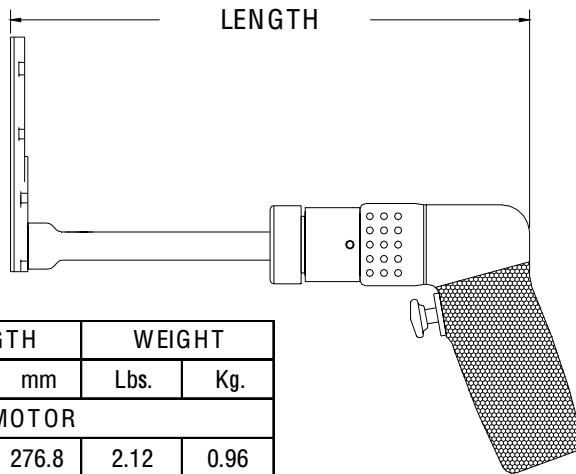
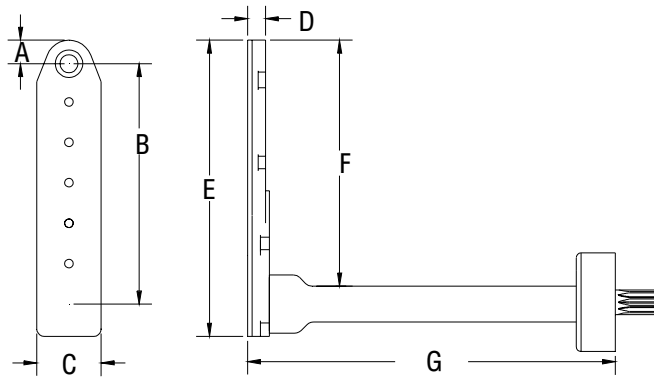


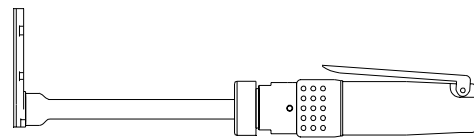
	A	B	C	D	E	F	G	SERIES 1 L DRILL	
INCH	.327	3.359	.900	.250	4.127	3.427	6.188	MAXIMUM RECOMMENDED DRILL DIAMETER	.1875 INCH
MM	8.30	85.31	22.86	6.35	104.8	87.04	157.1		4.76 mm



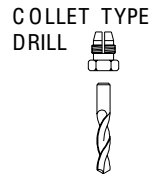
13807 ATTACHMENT ONLY EXTENDED



TOOL ORDER NUMBER	R.P.M.	LENGTH		WEIGHT	
		Inch	mm	Lbs.	Kg.
D SERIES .30 HP MOTOR					
16314	250	10.9	276.8	2.12	0.96
13901	500	10.9	276.8	2.12	0.96
13902	750	10.9	276.8	2.12	0.96
13903	1000	10.9	276.8	2.12	0.96
13904	1500	10.9	276.8	2.12	0.96
13905	2800	10.0	254.0	1.84	0.83
D2 SERIES .60 HP MOTOR					
16315	250	12.85	326.3	3.69	1.67
13906	450	12.25	311.1	2.99	1.35
13907	1000	12.25	311.1	2.99	1.35
13908	2000	11.00	279.4	2.74	1.24
13909	2700	11.00	279.4	2.74	1.24
13910	3500	11.00	279.4	2.74	1.24
RD2 .40 HP REVERSIBLE MOTOR					
16316	250	12.85	326.3	3.69	1.67
13911	450	12.25	311.1	3.24	1.46
13912	1000	12.25	311.1	3.24	1.46
13913	2000	11.00	279.4	2.99	1.35
13914	2700	11.00	279.4	2.99	1.35
13915	3500	11.00	279.4	2.99	1.35



Add an S after the tool order number for the straight handle option.



INTERNAL THREAD	
ADD TO TOOL No.	
1/4-28	A
10-32	C
9/32-40	E
5/16-24	F
COLLET	D