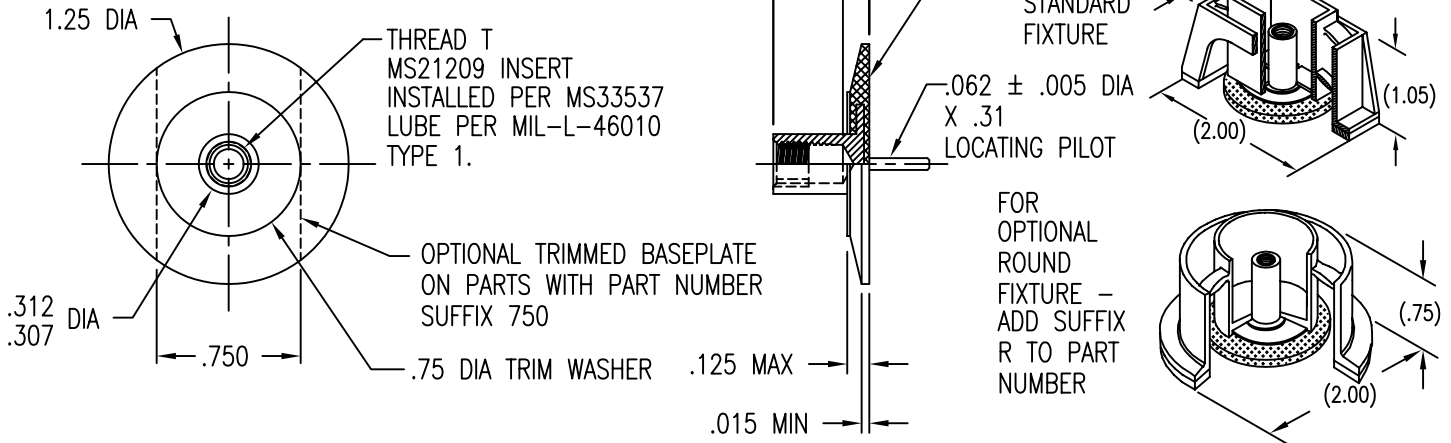


STUD STRAIGHT WITHIN .004 INCH PER INCH OF LENGTH. THREAD PITCH DIAM CONCENTRIC WITH LOCATING PILOT O.D. WITHIN .020 FIM. AND PERPENDICULAR TO THE BASE WITHIN ± 1 DEG.

SURFACE FLAT TO WITHIN .010 FIM

DISPOSABLE PRESSURE SENSITIVE ADHESIVE FIXTURE HOLDS STUD WHILE ADHESIVE CURES



LENGTH L DATA

CODE	6	7	8	9	10	11	12	13	14	15	16	17	18	20	22	24
L	.375	.437	.500	.562	.625	.687	.750	.812	.875	.937	1.000	1.062	1.125	1.250	1.375	1.500
D MIN	.295	.400	.472													

MATERIAL DATA THREAD SHANK AND HEAD ONE PIECE CONSTRUCTION

CODE	MATERIAL	SPEC.	FINISH	SPEC.
A	2024	QQ-A-200 OR QQ-A-225	NONE	
AA	ALUMINUM		ANODIZE	MIL-A-8625
CRA	A-286 CRES	AMS 5726, 5731, 5732, 5734, 5737	PASSIVATE	QQ-P-35
T	6AL-4V TITANIUM	AMS 4928, 4965, OR 4967	NONE	

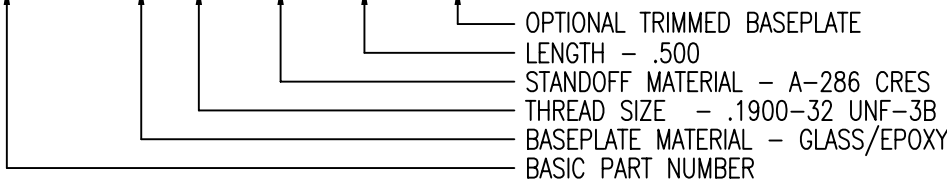
TRIM WASHER MATERIAL: 304 CRES PER MIL-S-5059 OR AMS 5513.
TRIM WASHER FINISH: PASSIVATE PER QQ-P-35.

THREAD T DATA

CODE	BASEPLATE MATERIAL	CODE	THREAD SIZE
C	CARBON/EPOXY, 350°F	08	.1640-32 UNC-3B
G	GLASS/EPOXY, 250°F	3	.1900-32 UNF-3B

EXAMPLE PART NUMBER

CB4018 G 3 CRA 8-750



UNLESS OTHERWISE SPECIFIED, ALL DIMENSIONS ARE IN INCHES AND TOLERANCES ARE AS SHOWN BELOW. DIMENSIONAL TOLERANCES AND SYMBOLS PER ANSI Y14.5M-1982.

PROPRIETARY PARTS SHOWN IN THIS DRAWING ARE THE SUBJECT OF ISSUED UNITED STATES AND FOREIGN PATENTS AND PATENTS PENDING. UNAUTHORIZED REPRODUCTION AND/OR DISTRIBUTION OF THIS DRAWING IS SPECIFICALLY PROHIBITED.

GLICK BOND

CARSON CITY
NEVADA 89706

APPROVALS		DATE	TITLE				
ANGLES	±1°	DRAWN MGV	4JUN97	STUD, FEMALE THREAD, LOCKING, COMPOSITE BASE, PILOTED			
.XX	±.03	CHECKED DAC	4JUN97	SIZE	CAGE CODE	DWG. NO.	REV.
.XXX	±.010	RELEASED CGH	4JUN97	A	66530	CB4018	6
.XXXX	±.001	REVISED MGV	4JUN97	SCALE	1/1	4JUN97	SHEET 1 OF 1