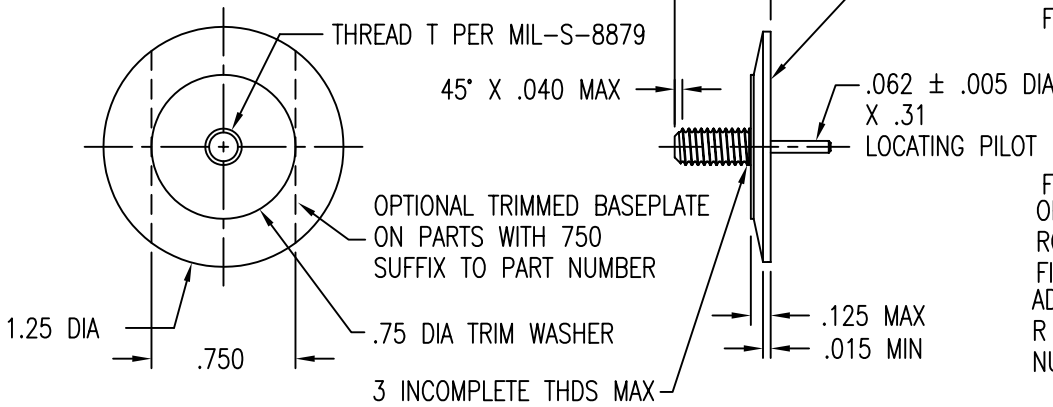


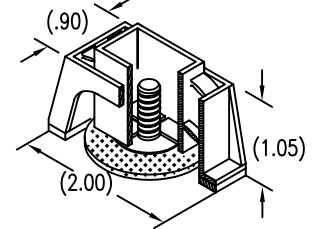
STUD STRAIGHT WITHIN .004 INCH PER INCH OF LENGTH. THREAD PITCH DIA CONCENTRIC WITH LOCATING PILOT O.D. WITHIN .020 FIM. AND PERPENDICULAR TO THE BASE WITHIN ± 1 DEG.

SURFACE TEXTURE: ROOT RADIUS AND THD FLANKS 32, OTHER SURFACES 125 MICROINCH. GRIT BLASTED SURFACES 125 TO 250 MICROINCH.
SURFACE FLAT TO WITHIN .010 FIM

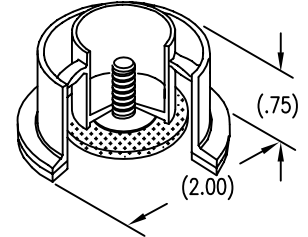
DISPOSABLE PRESSURE SENSITIVE ADHESIVE FIXTURE HOLDS STUD WHILE ADHESIVE CURES



STANDARD FIXTURE



FOR OPTIONAL ROUND FIXTURE - ADD SUFFIX R TO PART NUMBER



LENGTH DATA

CODE	4	6	8	10	12	14	16	18	20	22	24	26	28	30	32
L	.250	.375	.500	.625	.750	.875	1.000	1.125	1.250	1.375	1.500	1.625	1.750	1.875	2.000

MATERIAL DATA THREAD SHANK AND HEAD ONE PIECE CONSTRUCTION

CODE	THREAD MATL	SPEC.	FINISH	SPEC.
A	2024 ALUMINUM	QQ-A-200, OR QQ-A-225	NONE	
AA			ANODIZE	MIL-A-8625
CRA	A-286 CRES	AMS 5726, 5731, 5732, 5734, OR 5737	PASSIVATE	QQ-P-35
T	6AL-4V TITANIUM	AMS 4928, 4965, OR 4967	NONE	

CODE	BASEPLATE MATL
C	CARBON/EPOXY 350° F
G	GLASS/EPOXY 250° F

TRIM WASHER MATERIAL 304 CRES PER MIL-S-5059 OR AMS 5513.
TRIM WASHER FINISH: PASSIVATE PER QQ-P-35.

THREAD DATA

CODE	THREAD T
08	.164-32 UNJC-3A
3	.1900-32 UNJF-3A
4	.2500-28 UNJF-3A

EXAMPLE PART NUMBER

CB4017 G 3 CRA 12-750

OPTIONAL TRIMMED BASEPLATE
LENGTH - .750
THREAD MATERIAL - A-286 CRES
THREAD - .1900-32 UNJF-3A
BASEPLATE MATERIAL - GLASS/EPOXY
BASIC PART NUMBER

UNLESS OTHERWISE SPECIFIED, ALL DIMENSIONS ARE IN INCHES AND TOLERANCES ARE AS SHOWN BELOW. DIMENSIONAL TOLERANCES AND SYMBOLS PER ANSI Y14.5M-1982.

PROPRIETARY PARTS SHOWN IN THIS DRAWING ARE THE SUBJECT OF ISSUED UNITED STATES AND FOREIGN PATENTS AND PATENTS PENDING. UNAUTHORIZED REPRODUCTION AND/OR DISTRIBUTION OF THIS DRAWING IS SPECIFICALLY PROHIBITED.

CLICK BOND

CARSON CITY
NEVADA 89706

APPROVALS		DATE	TITLE			
ANGLES	±1°	DRAWN MG	STUD, COMPOSITE BASE, PILOTED			
.XX	±.03	CHECKED DAC	SIZE	CAGE CODE	DWG. NO.	REV.
.XXX	±.010	RELEASED CGH	A	66530	CB4017	5
.XXXX	±.001	REVISED MG	SCALE	4JUN97		SHEET 1 OF 1