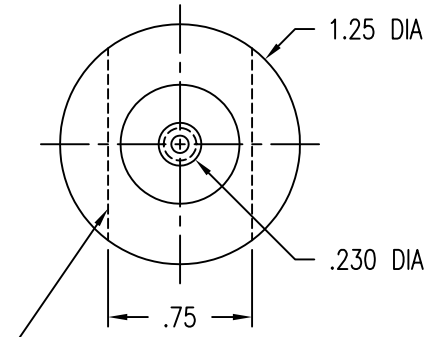
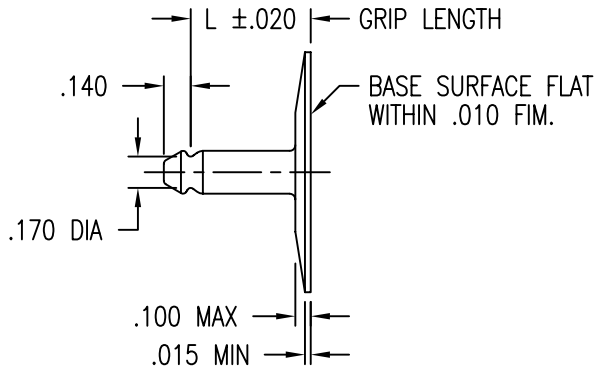


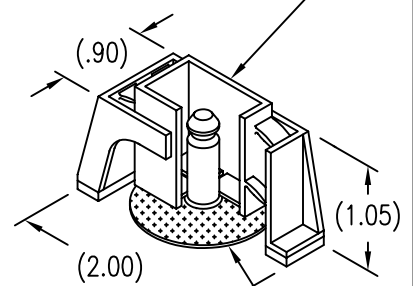
STUD STRAIGHT WITHIN .004 INCH PER INCH OF LENGTH.



FOR OPTIONAL TRIMMED BASE ADD 750 SUFFIX TO PART NUMBER.



DISPOSABLE PRESSURE SENSITIVE ADHESIVE FIXTURE HOLDS STUD WHILE ADHESIVE CURES.



STUD ATTACHED BY ADHESIVE APPLIED TO THIS SURFACE.

NOTE: TO OPERATE WITH MS27977 SOCKET.

GRIP LENGTH L DATA

CODE	4	6	8	10
L	.250	.375	.500	.625

MATERIAL AND FINISH DATA

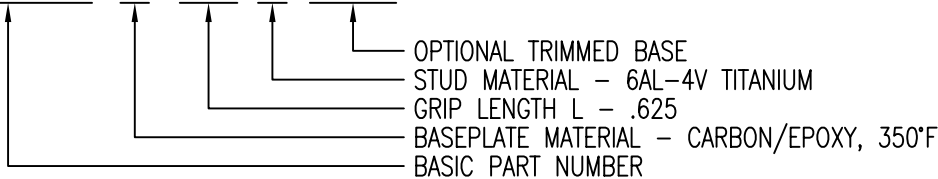
CODE	STUD MATERIAL	SPEC.	FINISH	SPEC.
CR	302, 303, 304 CRES OR A-286 CRES	AMS 5513, 5516, 5636, 5637, 5638, 5639, 5640, 5641, OR 5647 AMS 5525, 5726, 5731, 5732, 5734, OR 5737 (CHEMISTRY ONLY)	PASSIVATE	QQ-P-35
T	6AL-4V TITANIUM	AMS 4911, 4928, 4965, OR 4967	NONE	

COMPOSITE MATERIAL

CODE	BASEPLATE MATERIAL
C	CARBON/EPOXY, 350°F
E	GLASS/EPOXY, 350°F
G	GLASS/EPOXY, 250°F

EXAMPLE PART NUMBER

CB4003 C 10 T 750



UNLESS OTHERWISE SPECIFIED, ALL DIMENSIONS ARE IN INCHES AND TOLERANCES ARE AS SHOWN BELOW. DIMENSIONAL TOLERANCES AND SYMBOLS PER ANSI Y14.5M-1982.

PROPRIETARY PARTS SHOWN IN THIS DRAWING ARE THE SUBJECT OF ISSUED UNITED STATES AND FOREIGN PATENTS AND PATENTS PENDING. UNAUTHORIZED REPRODUCTION AND/OR DISTRIBUTION OF THIS DRAWING IS SPECIFICALLY PROHIBITED.

GLICK BOND

CARSON CITY
NEVADA 89706

APPROVALS		DATE	TITLE				
ANGLES	±1°	DRAWN <i>DAC</i>	8FEB03	SNAP STUD, COMPOSITE BASE			
.XX	±.03	CHECKED <i>DAC/mtm</i>	8FEB03	SIZE	CAGE CODE	DWG. NO.	REV.
.XXX	±.010	RELEASED <i>CGH</i>	8FEB03	A	66530	CB4003	8
.XXXX	±.001	REVISED <i>DAC</i>	8FEB03	SCALE	1/1	8FEB03	SHEET 1 OF 1