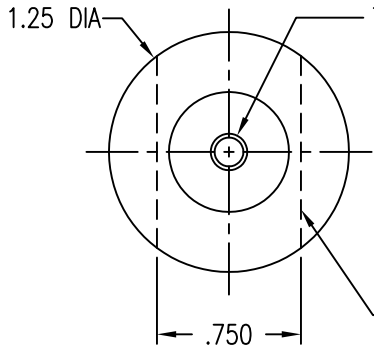


STUD STRAIGHT WITHIN .004 INCH PER INCH OF LENGTH. PITCH DIAM CONCENTRIC WITH BASE O.D. WITHIN .020 FIM. PITCH DIAM PERPENDICULAR TO BASE WITHIN ± 1 DEG.

SURFACE TEXTURE: ROOT RADIUS AND THD FLANKS 32, OTHER SURFACES 125 MICROINCH. GRIT BLASTED SURFACES 125 TO 250 MICROINCH.

DISPOSABLE PRESSURE SENSITIVE ADHESIVE FIXTURE HOLDS STUD WHILE ADHESIVE CURES



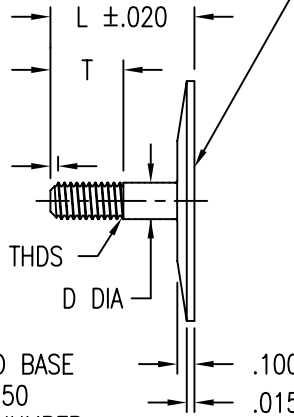
THREAD T PER MIL-S-8879

45° REF X C MAX

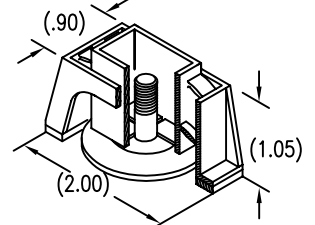
1.5 INCOMPLETE THDS PERMISSIBLE

OPTIONAL TRIMMED BASE ON PARTS WITH 750 SUFFIX TO PART NUMBER

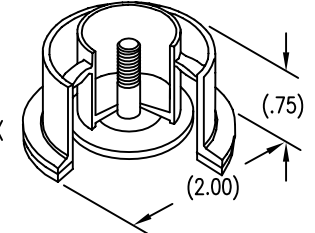
SURFACE FLAT TO WITHIN .010 FIM



STANDARD FIXTURE



FOR OPTIONAL ROUND FIXTURE - ADD SUFFIX R TO PART NUMBER



LENGTH L DATA (LENGTH L IN SIXTEENTHS OF AN INCH)

CODE	12	14	16	18	20	22	24	26	28	30	32	34	36	38	40	42	44	46	48
L	.750	.875	1.000	1.125	1.250	1.375	1.500	1.625	1.750	1.875	2.000	2.125	2.250	2.375	2.500	2.625	2.750	2.875	3.000

MATERIAL AND FINISH DATA

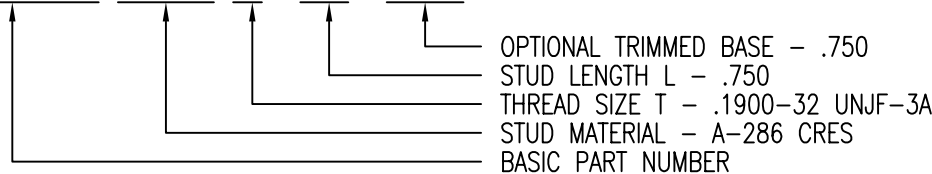
CODE	THD AND BASE MATL	SPEC.	FINISH	SPEC.
A	2024 OR 6061 ALUMINUM	QQ-A-200, QQ-A-225, OR QQ-A-250	NONE	
AA			ANODIZE	MIL-A-8625
CR	302, 303, 304, OR A-286 CRES	AMS 5513, 5516, 5525, 5636, 5637, 5638, 5639, 5640, 5641, 5647, 5726, 5731, 5732, 5734, OR 5737	PASSIVATE	QQ-P-35
CRA	A-286 CRES	AMS 5525, 5726, 5731, 5732, 5734, OR 5737	PASSIVATE	QQ-P-35
T	6AL-4V TITANIUM	AMS 4911, 4928, 4965, OR 4967	NONE	

THREAD DATA

CODE	THREAD T	C MAX	D +.000 -.004	T
3	.1900-32 UNJF-3A	.039	.1900	.35
4	.2500-28 UNJF-3A	.045	.2500	.43
5	.3125-24 UNJF-3A	.052	.3125	.47
6	.3750-24 UNJF-3A	.052	.3750	.58

EXAMPLE PART NUMBER

CB3100 CRA 3-12-750



UNLESS OTHERWISE SPECIFIED, ALL DIMENSIONS ARE IN INCHES AND TOLERANCES ARE AS SHOWN BELOW. DIMENSIONAL TOLERANCES AND SYMBOLS PER ANSI Y14.5M-1982.

PROPRIETARY PARTS SHOWN IN THIS DRAWING ARE THE SUBJECT OF ISSUED UNITED STATES AND FOREIGN PATENTS AND PATENTS PENDING. UNAUTHORIZED REPRODUCTION AND/OR DISTRIBUTION OF THIS DRAWING IS SPECIFICALLY PROHIBITED.

GLICK BOND

CARSON CITY NEVADA 89706

APPROVALS		DATE	TITLE				
ANGLES	±1°	DRAWN RGP	20JUL95	STUD, ADHESIVE BONDED			
.XX	±.03	CHECKED DAC	20JUL95	SIZE	CAGE CODE	DWG. NO.	REV.
.XXX	±.010	RELEASED CGH	26JUL95	A	66530	CB3100	0
.XXXX	±.001	REVISED		SCALE	1/1	20JUL95	SHEET 1 OF 1