

\* - LENGTH L IN 1/16 INCH INCREMENTS ±.010 (2 DIGITS)  
 LENGTH L IN THOUSANDTHS OF AN INCH ±.005 (3 DIGITS)

DIMENSION DATA

PART NUMBER	FOR BOLT SIZE	A ±.005 DIA	DI DIA	DO DIA	L MAX ±.010	HF REF	HS REF
JK5902 ( ) 55 N ( ) ( )	#8	.260	.1685 .1670	.1850 .1840	.750	.038	.042
JK5902 ( ) 06 N ( ) ( )	#10	.300	.1945 .1930	.2105 .2095	1.000	.044	.048
JK5902 ( ) 08 N ( ) ( )	1/4	.393	.2545 .2530	.2706 .2696	1.000	.058	.062
JK5902 ( ) 10 N ( ) ( )	5/16	.472	.3170 .3155	.3331 .3321	1.000	.065	.069
JK5902 ( ) 12 N ( ) ( )	3/8	.558	.3795 .3780	.3956 .3946	1.000	.075	.079

MATERIAL DATA

CODE	MATERIAL	SPEC.	CONDITION	FINISH	SPEC.
C	A-286 CRES	AMS 5525	AS FORMED	PASSIVATE	QQ-P-35
D	A-286 CRES	AMS 5525	ANNEALED	PASSIVATE	QQ-P-35

SURFACE FINISH

CODE	FINISH	SPEC.
N	NONE	
AC	ALUMINUM COAT	NAS 4006

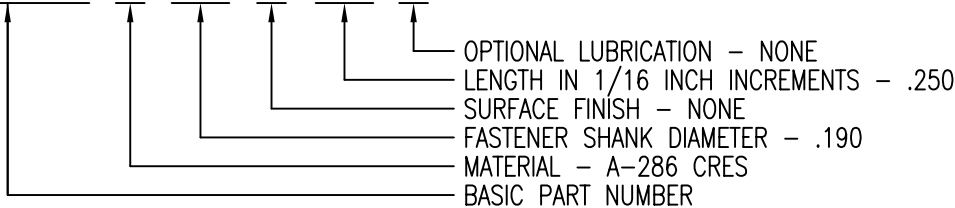
OPTIONAL LUBRICATION DATA

CODE	LUBRICATION	SPEC.
NONE	NONE	
B	NONE	
L	CETYL ALCOHOL	MIL-L-87132

NOTE: (1) .001 MAX BURR PERMISSIBLE ON INTERIOR AT END OF PART.

EXAMPLE PART NUMBER

JK5902 C 06 N 04



UNLESS OTHERWISE SPECIFIED, ALL DIMENSIONS ARE IN INCHES AND TOLERANCES ARE AS SHOWN BELOW. DIMENSIONAL TOLERANCES AND SYMBOLS PER ANSI Y14.5M-1982.

PROPRIETARY PARTS SHOWN IN THIS DRAWING ARE THE SUBJECT OF ISSUED UNITED STATES AND FOREIGN PATENTS AND PATENTS PENDING. UNAUTHORIZED REPRODUCTION AND/OR DISTRIBUTION OF THIS DRAWING IS SPECIFICALLY PROHIBITED.

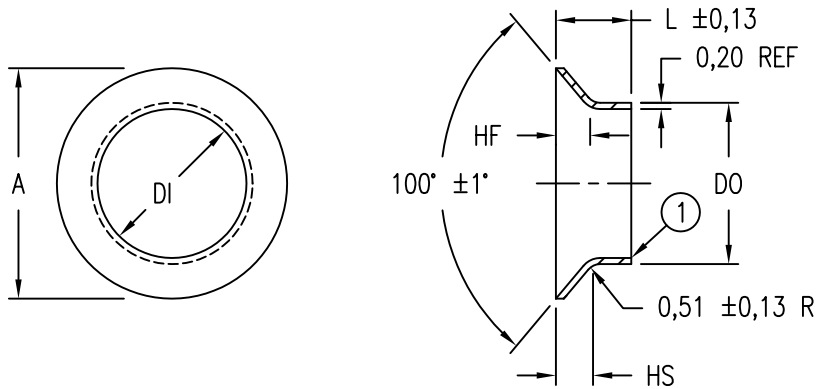
**GLICK BOND**

CARSON CITY  
NEVADA 89706

CAD JK5902-1  
PANDOR  
STANDARD

APPROVALS	DATE
DRAWN <b>BPEREZ</b>	10APR03
CHECKED <b>DOC</b>	12APR03
RELEASED <b>CGH</b>	12APR03
REVISED <b>BPEREZ</b>	10APR03

TITLE			
SLEEVE, BOLT CLEARANCE, 100° FLUSH SHEAR HEAD			
SIZE	CAGE CODE	DWG. NO.	REV.
A	66530	JK5902	9
SCALE	12APR03		SHEET 1 OF 2



DIMENSION DATA

PART NUMBER	FOR BOLT SIZE	A ±0,13 DIA	DI DIA	DO DIA	L MAX ±0,25	HF REF	HS REF
JK5902 ( ) 55 N ( ) ( )	#8 (.164 INCH)	6,60	4,280 4,241	4,699 4,673	19,1	0,98	1,07
JK5902 ( ) 06 N ( ) ( )	#10 (.190 INCH)	7,62	4,941 4,902	5,347 5,321	25,4	1,13	1,22
JK5902 ( ) 08 N ( ) ( )	1/4 INCH	9,98	6,465 6,426	6,874 6,847	25,4	1,48	1,57
JK5902 ( ) 10 N ( ) ( )	5/16 INCH	11,99	8,052 8,013	8,461 8,435	25,4	1,66	1,75
JK5902 ( ) 12 N ( ) ( )	3/8 INCH	14,17	9,640 9,601	10,049 10,022	25,4	1,91	2,00

MATERIAL DATA

CODE	MATERIAL	SPEC.	CONDITION	FINISH	SPEC.
C	A-286 CRES	AMS 5525	AS FORMED	PASSIVATE	QQ-P-35
D	A-286 CRES	AMS 5525	ANNEALED	PASSIVATE	QQ-P-35

SURFACE FINISH

CODE	FINISH	SPEC.
N	NONE	
AC	ALUMINUM COAT	NAS 4006

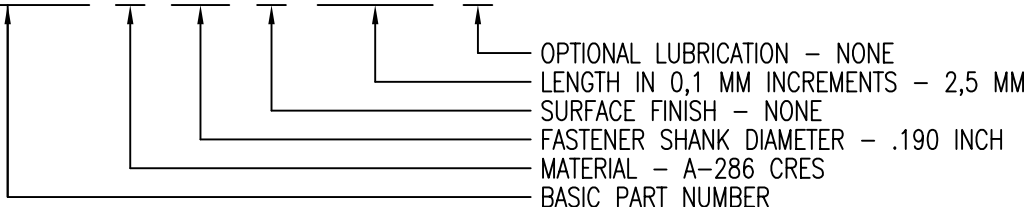
OPTIONAL LUBRICATION DATA

CODE	LUBRICATION	SPEC.
NONE	NONE	
B	NONE	
L	CETYL ALCOHOL	MIL-L-87132

NOTE: (1) 0,025 MAX BURR PERMISSIBLE ON INTERIOR AT END OF PART.

EXAMPLE PART NUMBER

JK5902 C 06 N 25MM



UNLESS OTHERWISE SPECIFIED, ALL DIMENSIONS ARE IN MILLIMETERS AND TOLERANCES ARE AS SHOWN BELOW. DIMENSIONAL TOLERANCES AND SYMBOLS PER ANSI Y14.5M-1982.

PROPRIETARY PARTS SHOWN IN THIS DRAWING ARE THE SUBJECT OF ISSUED UNITED STATES AND FOREIGN PATENTS AND PATENTS PENDING. UNAUTHORIZED REPRODUCTION AND/OR DISTRIBUTION OF THIS DRAWING IS SPECIFICALLY PROHIBITED.



CARSON CITY  
NEVADA 89706

CAD JK5902-2

PANDOR  
STANDARD

APPROVALS	DATE
DRAWN <b>BPEREZ</b>	10APR03
CHECKED <b>DOC</b>	12APR03
RELEASED <b>CGH</b>	14APR03
REVISED <b>BPEREZ</b>	10APR03

TITLE			
SLEEVE, BOLT CLEARANCE, 100° FLUSH SHEAR HEAD			
SIZE	CAGE CODE	DWG. NO.	REV.
A	66530	JK5902 (METRIC)	9
SCALE	4/1	12APR03	SHEET 2 OF 2