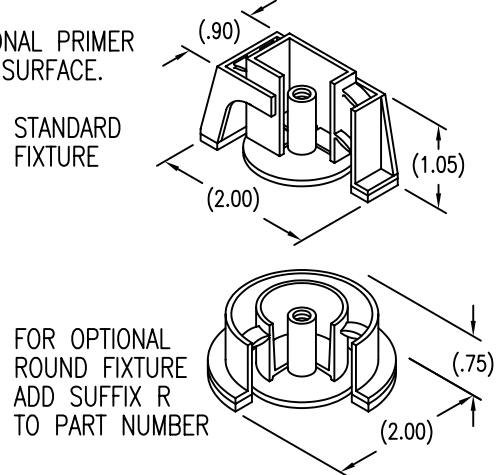


DISPOSABLE PRESSURE SENSITIVE ADHESIVE FIXTURE HOLDS STANDOFF WHILE ADHESIVE CURES.



LENGTH L DATA (LENGTH L IN SIXTEENTHS OF AN INCH)

| CODE  | 5    | 6    | 7    | 8    | 9    | 10   | 11   | 12   | 13   | 14   | 15   | 16    | 17    |
|-------|------|------|------|------|------|------|------|------|------|------|------|-------|-------|
| L     | .312 | .375 | .437 | .500 | .562 | .625 | .687 | .750 | .812 | .875 | .937 | 1.000 | 1.062 |
| D MIN | .156 |      |      | .187 |      |      | .250 |      |      | .375 |      |       |       |

BASEPLATE MATERIAL AND FINISH

| CODE | BASEPLATE MATERIAL | FINISH    |
|------|--------------------|-----------|
| AX   | ALUMINUM           | NONE      |
| AA   | ALUMINUM           | ANODIZED  |
| CR   | 300 SERIES CRES    | PASSIVATE |
| CRM  | 316 CRES           | PASSIVATE |
| C    | CARBON/EPOXY       | NONE      |
| G    | GLASS/EPOXY        | NONE      |

THREAD AND DIMENSION DATA

| CODE | THREAD T       | A MAX |
|------|----------------|-------|
| 440  | .112-40 UNC-2B | .217  |
| 632  | .138-32 UNC-2B | .285  |
| 832  | .164-32 UNC-2B |       |
| 1032 | .190-32 UNF-2B | .380  |
| 1420 | .250-20 UNC-2B |       |

STANDOFF MATERIAL AND FINISH

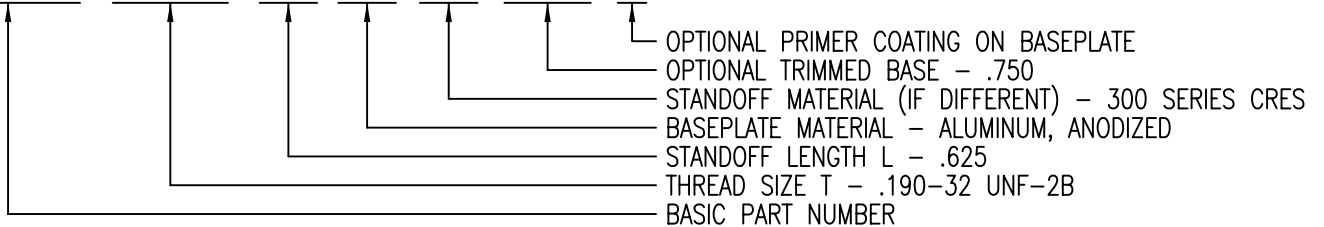
| CODE | STANDOFF MATERIAL | FINISH    |
|------|-------------------|-----------|
| AX   | ALUMINUM          | NONE      |
| CR   | 300 SERIES CRES   | PASSIVATE |

OPTIONAL PRIMER

| CODE | BASEPLATE PRIMER |
|------|------------------|
| P    | EPOXY PRIMER     |

EXAMPLE PART NUMBER

CN125-1032-10 AA CR 750 P



UNLESS OTHERWISE SPECIFIED, ALL DIMENSIONS ARE IN INCHES AND TOLERANCES ARE AS SHOWN BELOW. DIMENSIONAL TOLERANCES AND SYMBOLS PER ANSI Y14.5M-1982.

PROPRIETARY PARTS SHOWN IN THIS DRAWING ARE THE SUBJECT OF ISSUED UNITED STATES AND FOREIGN PATENTS AND PATENTS PENDING. UNAUTHORIZED REPRODUCTION AND/OR DISTRIBUTION OF THIS DRAWING IS SPECIFICALLY PROHIBITED.

**GLICK BOND**

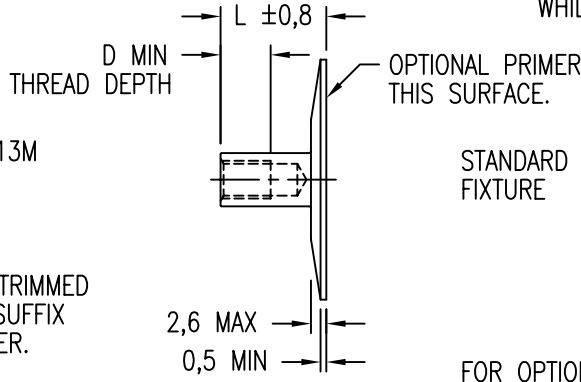
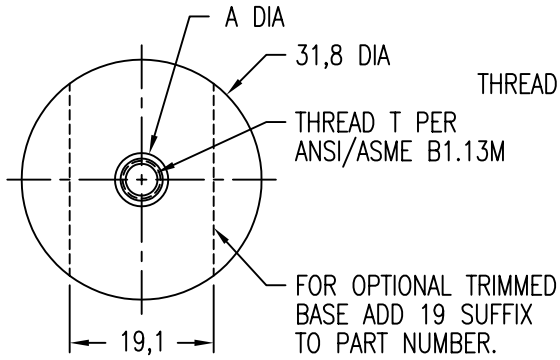
CARSON CITY  
NEVADA 89706

CAD CN125-1

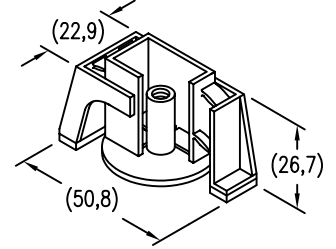
| APPROVALS |     | DATE    |
|-----------|-----|---------|
| DRAWN     | DAC | 17NOV00 |
| CHECKED   | DAC | 17NOV00 |
| RELEASED  | CGH | 17NOV00 |
| REVISED   | DAC | 17NOV00 |

| TITLE                     |           |          |         |
|---------------------------|-----------|----------|---------|
| STANDOFF, ADHESIVE BONDED |           |          |         |
| SIZE                      | CAGE CODE | DWG. NO. | REV.    |
| A                         | 66530     | CN125    | 11      |
| SCALE                     | 1/1       |          | 17NOV00 |
| SHEET 1 OF 2              |           |          |         |

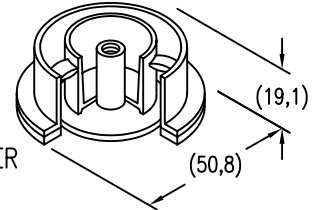
DISPOSABLE PRESSURE SENSITIVE ADHESIVE FIXTURE HOLDS STANDOFF WHILE ADHESIVE CURES.



STANDARD FIXTURE



FOR OPTIONAL ROUND FIXTURE ADD SUFFIX R TO PART NUMBER



LENGTH L DATA (LENGTH L IN MILLIMETERS)

| CODE  | 8M  | 10M | 12M | 14M | 16M | 18M | 20M | 22M | 25M |
|-------|-----|-----|-----|-----|-----|-----|-----|-----|-----|
| L     | 8   | 10  | 12  | 14  | 16  | 18  | 20  | 22  | 25  |
| D MIN | 4,0 | 5,0 | 6,5 | 9,5 |     |     |     |     |     |

BASEPLATE MATERIAL AND FINISH

| CODE | BASEPLATE MATERIAL | FINISH    |
|------|--------------------|-----------|
| AX   | ALUMINUM           | NONE      |
| AA   | ALUMINUM           | ANODIZED  |
| CR   | 300 SERIES CRES    | PASSIVATE |
| CRM  | 316 CRES           | PASSIVATE |
| C    | CARBON/EPOXY       | NONE      |
| G    | GLASS/EPOXY        | NONE      |

THREAD AND DIMENSION DATA

| CODE | THREAD T    | A MAX |
|------|-------------|-------|
| 3M   | M3 X 0,5 6H | 4,35  |
| 4M   | M4 X 0,7 6H | 7,25  |
| 5M   | M5 X 0,8 6H |       |

STANDOFF MATERIAL AND FINISH

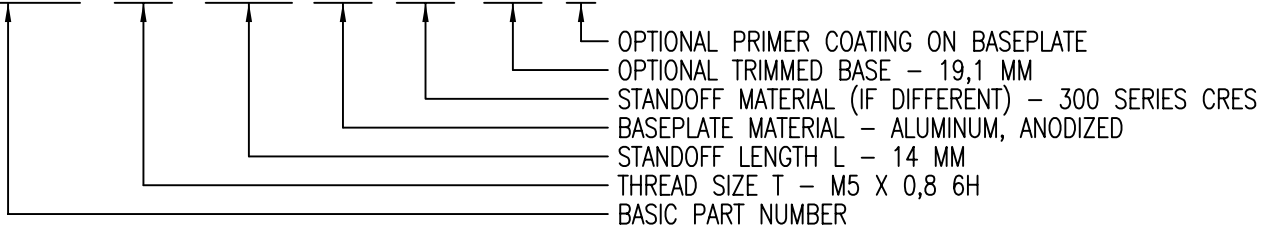
| CODE | STANDOFF MATERIAL | FINISH    |
|------|-------------------|-----------|
| AX   | ALUMINUM          | NONE      |
| CR   | 300 SERIES CRES   | PASSIVATE |

OPTIONAL PRIMER

| CODE | BASEPLATE PRIMER |
|------|------------------|
| P    | EPOXY PRIMER     |

EXAMPLE PART NUMBER

CN125-5M 14M AA CR 19 P



UNLESS OTHERWISE SPECIFIED, ALL DIMENSIONS ARE IN MILLIMETERS AND TOLERANCES ARE AS SHOWN BELOW. DIMENSIONAL TOLERANCES AND SYMBOLS PER ANSI Y14.5M-1982.

PROPRIETARY PARTS SHOWN IN THIS DRAWING ARE THE SUBJECT OF ISSUED UNITED STATES AND FOREIGN PATENTS AND PATENTS PENDING. UNAUTHORIZED REPRODUCTION AND/OR DISTRIBUTION OF THIS DRAWING IS SPECIFICALLY PROHIBITED.

**GLICK BOND**

CARSON CITY  
NEVADA 89706

|                                  |       |
|----------------------------------|-------|
| CAD CN125-2<br>METRIC DIMENSIONS |       |
| ANGLES                           | ±1°   |
| .X                               | ±0,8  |
| .XX                              | ±0,25 |

| APPROVALS |     | DATE    |
|-----------|-----|---------|
| DRAWN     | DAC | 17NOV00 |
| CHECKED   | DAC | 17NOV00 |
| RELEASED  | CGH | 17NOV00 |
| REVISED   | DAC | 17NOV00 |

|                                    |             |                |              |
|------------------------------------|-------------|----------------|--------------|
| TITLE<br>STANDOFF, ADHESIVE BONDED |             |                |              |
| SIZE                               | CAGE CODE   | DWG. NO.       | REV.         |
| A                                  | 66530       | CN125 (METRIC) | 11           |
| SCALE                              | 1/1 17NOV00 |                | SHEET 2 OF 2 |