

MATERIAL AND FINISH DATA

CODE	MATERIAL	SPEC.	FINISH	SPEC.
A	7075-T6 ALUMINUM	AMS 4122, QQ-A-225/9	ANODIZE	MIL-A-8625, TYPE 1, NO SEAL
CR	302, 303, 304, OR A-286 CRES	AMS 5637, 5638, 5639, 5640, 5641 AMS 5726, 5731, 5732, 5734, 5737	PASSIVATE	AMS-QQ-P-35
CRA	A-286 CRES	AMS 5726, 5731, 5732, 5734, 5737	PASSIVATE	AMS-QQ-P-35
CRM	316 CRES	AMS 5648, 5649, 5653	PASSIVATE	AMS-QQ-P-35
T	6AL-4V TITANIUM	AMS 4928, 4965, 4967	NONE	

DIMENSION DATA

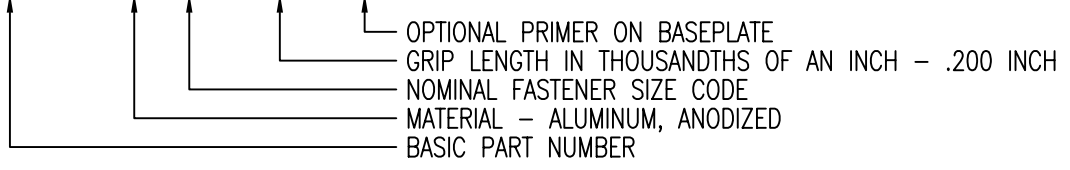
CODE	H DIA	A DIA	B DIA
06	.1410	.250	.62
08	.1720	.250	.62
3	.1940	.312	.75
4	.2570	.375	1.00

OPTIONAL PRIMER

CODE	MATERIAL	SPEC.
P	EPOXY PRIMER	MIL-PRF-85582

EXAMPLE PART NUMBER

CB5007 A 3-200 P



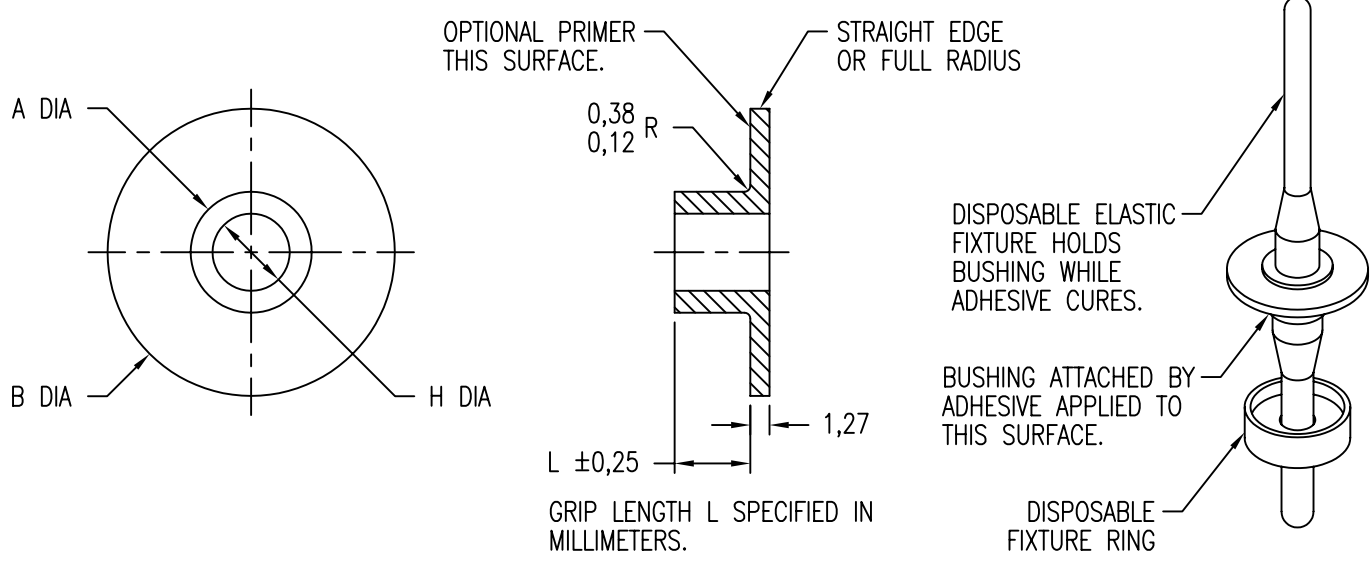
UNLESS OTHERWISE SPECIFIED, ALL DIMENSIONS ARE IN INCHES AND TOLERANCES ARE AS SHOWN BELOW. DIMENSIONAL TOLERANCES AND SYMBOLS PER ANSI Y14.5M-1982.

PROPRIETARY PARTS SHOWN IN THIS DRAWING ARE THE SUBJECT OF ISSUED UNITED STATES AND FOREIGN PATENTS AND PATENTS PENDING. UNAUTHORIZED REPRODUCTION AND/OR DISTRIBUTION OF THIS DRAWING IS SPECIFICALLY PROHIBITED.



CARSON CITY NEVADA 89706

CAD CB5007-1		APPROVALS		DATE	TITLE			
ANGLES	±1°	DRAWN	BPEREZ	4AUG04	BUSHING, PLAIN, ADHESIVE BONDED			
.XX	±.03	CHECKED	DOC	4AUG04	SIZE	CAGE CODE	DWG. NO.	REV.
.XXX	±.010	RELEASED	CGH	4AUG04	A	66530	CB5007	4
.XXXX	±.001	REVISED	BPEREZ	4AUG04	SCALE	2/1 4AUG04		SHEET 1 OF 2



MATERIAL AND FINISH DATA

CODE	MATERIAL	SPEC.	FINISH	SPEC.
A	7075-T6 ALUMINUM	AMS 4122, QQ-A-225/9	ANODIZE	MIL-A-8625, TYPE 1, NO SEAL
CR	302, 303, 304, OR A-286 CRES	AMS 5637, 5638, 5639, 5640, 5641 AMS 5726, 5731, 5732, 5734, 5737	PASSIVATE	AMS-QQ-P-35
CRA	A-286 CRES	AMS 5726, 5731, 5732, 5734, 5737	PASSIVATE	AMS-QQ-P-35
CRM	316 CRES	AMS 5648, 5649, 5653	PASSIVATE	AMS-QQ-P-35
T	6AL-4V TITANIUM	AMS 4928, 4965, 4967	NONE	

DIMENSION DATA

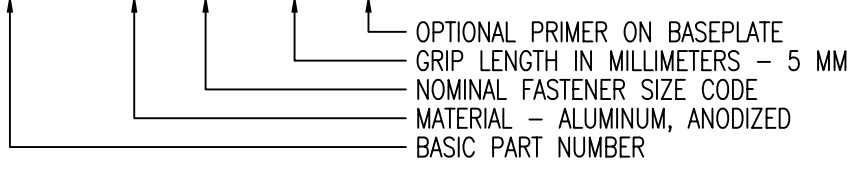
CODE	H DIA	A DIA	B DIA
3M	3,1	6,5	16,0
4M	4,1	6,5	16,0
5M	5,1	8,0	19,0
6M	6,1	9,5	25,0
10M	10,1	16,0	38,0

OPTIONAL PRIMER

CODE	MATERIAL	SPEC.
P	EPOXY PRIMER	MIL-PRF-85582

EXAMPLE PART NUMBER

CB5007 A 5M 5M P



UNLESS OTHERWISE SPECIFIED, ALL DIMENSIONS ARE IN MILLIMETERS AND TOLERANCES ARE AS SHOWN BELOW. DIMENSIONAL TOLERANCES AND SYMBOLS PER ANSI Y14.5M-1982.

PROPRIETARY PARTS SHOWN IN THIS DRAWING ARE THE SUBJECT OF ISSUED UNITED STATES AND FOREIGN PATENTS AND PATENTS PENDING. UNAUTHORIZED REPRODUCTION AND/OR DISTRIBUTION OF THIS DRAWING IS SPECIFICALLY PROHIBITED.



CARSON CITY
NEVADA 89706

CAD CB5007-2
METRIC DIMENSIONS

ANGLES	±1°
.X	±0,8
.XX	±0,25

APPROVALS	DATE
DRAWN BPEREZ	4AUG04
CHECKED DOC	4AUG04
RELEASED CGH	4AUG04
REVISED BPEREZ	4AUG04

TITLE BUSHING, PLAIN, ADHESIVE BONDED			
SIZE A	CAGE CODE 66530	DWG. NO. CB5007 (METRIC)	REV. 4
SCALE 2/1	4AUG04	SHEET 2 OF 2	