

DEBURR AND BREAK ALL EDGES .005 - .015.
SURFACE TEXTURE 125 MICRONS Ra MAX.

GRIP LENGTH L SPECIFIED IN THOUSANDTHS OF AN INCH. MINIMUM LENGTH AVAILABLE AS PER TABLE.

MATERIAL AND FINISH DATA

CODE	MATERIAL	SPEC.	FINISH	SPEC.
A	7075-T6 ALUMINUM	AMS 4122, QQ-A-225/9	ANODIZE	MIL-A-8625, TYPE 1, NO SEAL
CR	302, 303, 304 CRES OR A-286 CRES	AMS 5637, 5638, 5639, 5640, 5641 AMS 5726, 5731, 5732, 5734, 5737	PASSIVATE	QQ-P-35
CRA	A-286 CRES	AMS 5726, 5731, 5732, 5734, 5737	PASSIVATE	QQ-P-35
CRM	316 CRES	AMS 5648, 5649, 5653	PASSIVATE	QQ-P-35
T	6AL-4V TITANIUM	AMS 4928, 4965, 4967	NONE	

THREAD AND DIMENSION DATA AND STRENGTH REQUIREMENTS - THREAD T PER MIL-S-8879

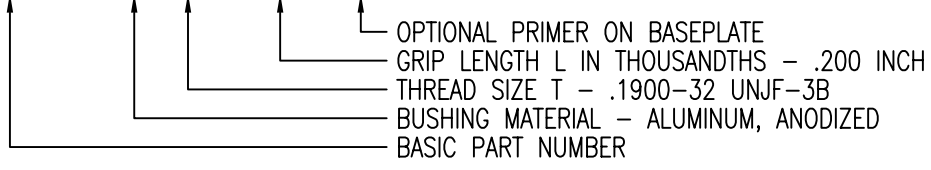
CODE	THREAD T	A DIA	B DIA	L MIN	H REF	J REF	K REF	TENSILE (LBS MIN)	
								ALUMINUM	STEEL
06	.1380-32 UNJC-3B	.250	.62	.100	1.42	.68	1.05	560	560
08	.1640-32 UNJC-3B	.250	.62	.100	1.42	.68	1.05	860	860
324	.1900-24 UNJC-3B	.312	.75	.100	1.42	.68	1.05	-	-
3	.1900-32 UNJF-3B	.312	.75	.100	1.42	.68	1.05	1230	1230
420	.2500-20 UNJC-3B	.375	1.00	.180	2.00	.90	1.05	-	-
4	.2500-28 UNJF-3B	.375	1.00	.180	2.00	.90	1.05	1140	2290

OPTIONAL PRIMER

CODE	BASEPLATE PRIMER	SPEC.
P	EPOXY PRIMER	MIL-P-85582

EXAMPLE PART NUMBER

CB5005 A 3-200 P



UNLESS OTHERWISE SPECIFIED, ALL DIMENSIONS ARE IN INCHES AND TOLERANCES ARE AS SHOWN BELOW. DIMENSIONAL TOLERANCES AND SYMBOLS PER ANSI Y14.5M-1982.

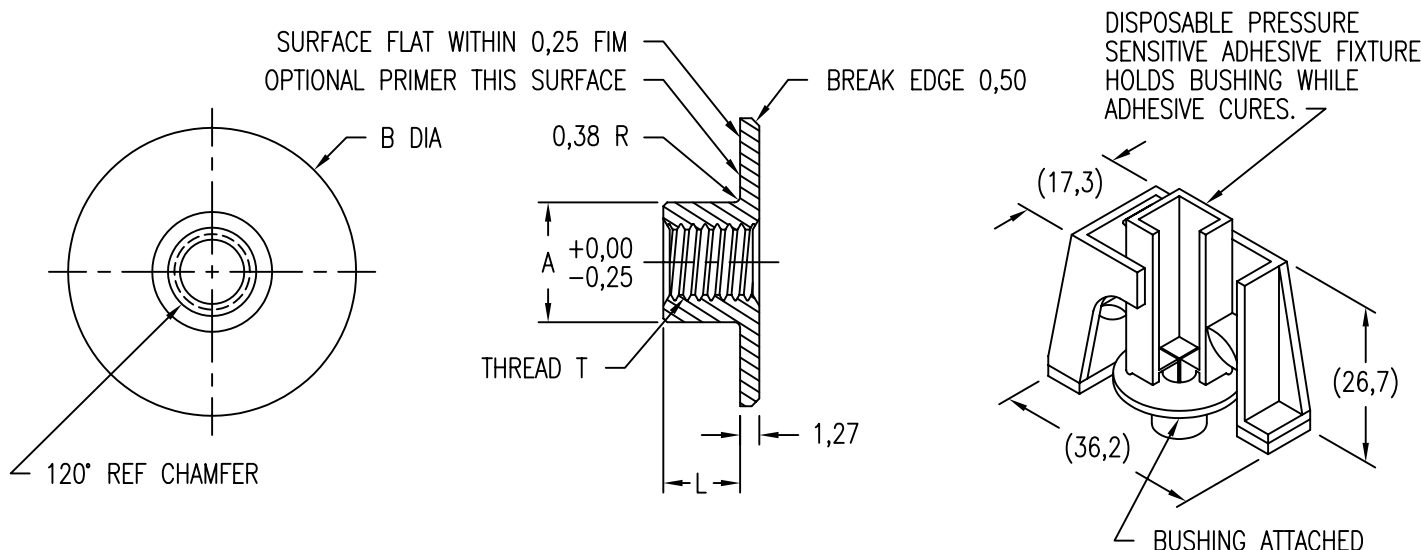
PROPRIETARY PARTS SHOWN IN THIS DRAWING ARE THE SUBJECT OF ISSUED UNITED STATES AND FOREIGN PATENTS AND PATENTS PENDING. UNAUTHORIZED REPRODUCTION AND/OR DISTRIBUTION OF THIS DRAWING IS SPECIFICALLY PROHIBITED.



CARSON CITY NEVADA 89706

CAD CB5005-1		APPROVALS	DATE
ANGLES	±1°	DRAWN DAC	9MAY03
.XX	±.03	CHECKED <i>[Signature]</i>	9MAY03
.XXX	±.010	RELEASED CGH	9MAY03
.XXXX	±.001	REVISED DAC	9MAY03

TITLE			
BUSHING, THREADED, SMALL BASE			
SIZE	CAGE CODE	DWG. NO.	REV.
A	66530	CB5005	12
SCALE	2/1 9MAY03		SHEET 1 OF 2



DEBURR AND BREAK ALL EDGES 0,25. SURFACE TEXTURE 3,2 MICROMETERS MAX. GRIP LENGTH L SPECIFIED IN MILLIMETERS. MINIMUM LENGTH AVAILABLE AS PER TABLE.

MATERIAL AND FINISH DATA

CODE	MATERIAL	SPEC.	FINISH	SPEC.
A	7075-T6 ALUMINUM	AMS 4122, QQ-A-225/9	ANODIZE	MIL-A-8625, TYPE 1, NO SEAL
CR	302, 303, 304 CRES OR A-286 CRES	AMS 5637, 5638, 5639, 5640, 5641 AMS 5726, 5731, 5732, 5734, 5737	PASSIVATE	QQ-P-35
CRA	A-286 CRES	AMS 5726, 5731, 5732, 5734, 5737	PASSIVATE	QQ-P-35
CRM	316 CRES	AMS 5648, 5649, 5653	PASSIVATE	QQ-P-35
T	6AL-4V TITANIUM	AMS 4928, 4965, 4967	NONE	

THREAD AND DIMENSION DATA AND STRENGTH REQUIREMENTS - THREAD T PER ISO5855

CODE	THREAD T	A DIA	B DIA	L MIN	TENSILE (kN MIN)
3M	MJ3 X 0,5 4H6H	6,35	15,9	3	2,5
4M	MJ4 X 0,7 4H6H	6,35	15,9	3	3,8
5M	MJ5 X 0,8 4H6H	7,95	19,1	3	5,5

OPTIONAL PRIMER

CODE	BASEPLATE PRIMER	SPEC.
P	EPOXY PRIMER	MIL-P-85582

EXAMPLE PART NUMBER

CB5005 A 5M 5M P

OPTIONAL PRIMER ON BASEPLATE
GRIP LENGTH L IN MILLIMETERS - 5 MM
THREAD SIZE T - MJ5 X 0,8 4H6H
BUSHING MATERIAL - ALUMINUM, ANODIZED
BASIC PART NUMBER

UNLESS OTHERWISE SPECIFIED, ALL DIMENSIONS ARE IN MILLIMETERS AND TOLERANCES ARE AS SHOWN BELOW. DIMENSIONAL TOLERANCES AND SYMBOLS PER ANSI Y14.5M-1982.

PROPRIETARY PARTS SHOWN IN THIS DRAWING ARE THE SUBJECT OF ISSUED UNITED STATES AND FOREIGN PATENTS AND PATENTS PENDING. UNAUTHORIZED REPRODUCTION AND/OR DISTRIBUTION OF THIS DRAWING IS SPECIFICALLY PROHIBITED.

GLICK BOND CARSON CITY NEVADA 89706

CAD CB5005-2 METRIC DIMENSIONS		APPROVALS		DATE	TITLE			
ANGLES ±1°		DRAWN <i>DAC</i>		9MAY03	BUSHING, THREADED, SMALL BASE			
.X ±0,8	CHECKED <i>DAC</i>	RELEASED <i>CGH</i>		9MAY03	SIZE	CAGE CODE	DWG. NO.	REV.
.XX ±0,25	REVISD <i>DAC</i>	9MAY03		9MAY03	A	66530	CB5005 (METRIC)	12
					SCALE	2/1		SHEET 2 OF 2