

NUT AND RETAINER MATERIAL AND FINISH DATA

CODE	NUT MATERIAL	SPEC.	DRI-FILM LUBE	RETAINER MATERIAL	SPEC.	PASSIVATE
CR	A-286 CRES	AMS 5525	MIL-PRF-46010	A-286, 304, 305 CRES	AMS 5525, 5639, 5514	AMS-QQ-P-35

THREAD T DATA AND RECOMMENDED SCREW TIGHTENING TORQUE

CODE	THREAD SIZE	SPEC.	INSTALLATION TORQUE
08	.1640-32 UNJC-3B	AS8879	15-20 IN-LBS
3	.1900-32 UNJF-3B		25-35 IN-LBS
4M	MJ4 X 0,7 4H6H	ISO5855	15-20 IN-LBS
5M	MJ5 X 0,8 4H6H		25-35 IN-LBS

BASEPLATE MATERIAL

CODE	MATERIAL
C	CARBON/EPOXY, 350°F CURE
E	GLASS/EPOXY, 350°F CURE
G	GLASS/EPOXY, 250°F CURE

OPTIONAL BASEPLATE PRIMER

CODE	PRIMER	SPEC.
P	EPOXY PRIMER	MIL-PRF-85582

LENGTH DATA

CODE	6	8	12	16	24
L ±.030	.375	.500	.750	1.000	1.500
X ±.015	.750	.875	1.125	1.375	1.875
Y ±.015	1.000	1.125	1.375	1.625	2.125

RADIAL FLOAT OF NUT .030 MIN FROM CENTER.
 SCREW CAN ENGAGE MAX MISALIGNED NUT.
 NUT CAN BE REMOVED FROM RETAINER AND REPLACED.
 THREAD LOCK BY ELLIPTICAL DEFORMATION.

STRENGTH REQUIREMENT: WILL WITHSTAND A
 40 LB LOAD APPLIED IN ANY DIRECTION AND
 45 IN-LB TORQUE.

EXAMPLE PART NUMBER

CB4022 G 3 CR 8 P 750

OPTIONAL TRIMMED BASE
 OPTIONAL PRIMER
 LENGTH L - .500
 NUT AND RETAINER MATERIAL - A-286, 304, 305 CRES
 THREAD SIZE T - .1900-32 UNJF-3B
 BASEPLATE MATERIAL - GLASS/EPOXY, 250°F CURE
 BASIC PART NUMBER

UNLESS OTHERWISE SPECIFIED, ALL DIMENSIONS ARE IN INCHES AND TOLERANCES ARE AS SHOWN BELOW. DIMENSIONAL TOLERANCES AND SYMBOLS PER ANSI Y14.5M-1982.

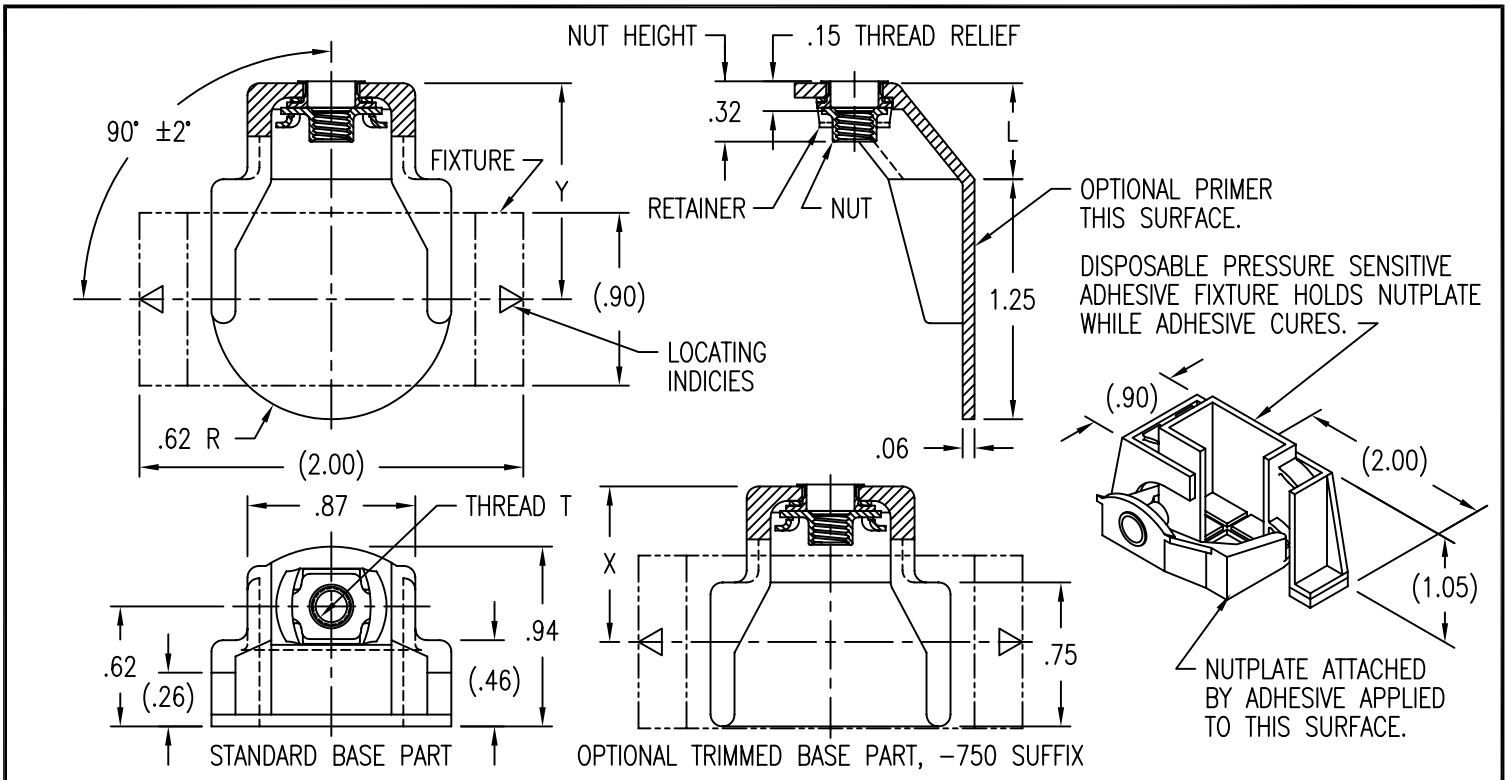
PROPRIETARY PARTS SHOWN IN THIS DRAWING ARE THE SUBJECT OF ISSUED UNITED STATES AND FOREIGN PATENTS AND PATENTS PENDING. UNAUTHORIZED REPRODUCTION AND/OR DISTRIBUTION OF THIS DRAWING IS SPECIFICALLY PROHIBITED.

GLICK BOND

CARSON CITY
 NEVADA 89706

CAD CB4022-1		APPROVALS	DATE
ANGLES	±1°	DRAWN DAC	16DEC04
.XX	±.03	CHECKED <i>[Signature]</i>	16DEC04
.XXX	±.010	RELEASED CGH	2JAN05
.XXXX	±.001	REVISED DAC	16DEC04

TITLE			
NUTPLATE, RIGHT ANGLE, COMPOSITE			
SIZE	CAGE CODE	DWG. NO.	REV.
A	66530	CB4022	14
SCALE	1/1 16DEC04		SHEET 1 OF 2



NUT AND RETAINER MATERIAL AND FINISH DATA

CODE	NUT MATERIAL	SPEC.	DRI-FILM LUBE	RETAINER MATERIAL	SPEC.	PASSIVATE
CR	A-286 CRES	AMS 5525	MIL-PRF-46010	A-286, 304, 305 CRES	AMS 5525, 5639, 5514	AMS-QQ-P-35

BASEPLATE MATERIAL

CODE	MATERIAL
U	GLASS/PEI, 30% GLASS
UC	CARBON/PEI, 30% CARBON
V	GLASS/PEI, 40% GLASS
VC	CARBON/PEI, 40% CARBON
W	GLASS/PEI, 30% GLASS, LOW HEAT RELEASE
WC	CARBON/PEI, 30% CARBON, LOW HEAT RELEASE

THREAD T DATA AND RECOMMENDED SCREW TIGHTENING TORQUE

CODE	THREAD SIZE	SPEC.	INSTALLATION TORQUE
08	.1640-32 UNJC-3B	AS8879	15-20 IN-LBS
3	.1900-32 UNJF-3B		25-35 IN-LBS
4M	MJ4 X 0,7 4H6H	ISO5855	15-20 IN-LBS
5M	MJ5 X 0,8 4H6H		25-35 IN-LBS

RADIAL FLOAT OF NUT .030 MIN FROM CENTER.
 SCREW CAN ENGAGE MAX MISALIGNED NUT.
 NUT CAN BE REMOVED FROM RETAINER AND REPLACED.
 THREAD LOCK BY ELLIPTICAL DEFORMATION.

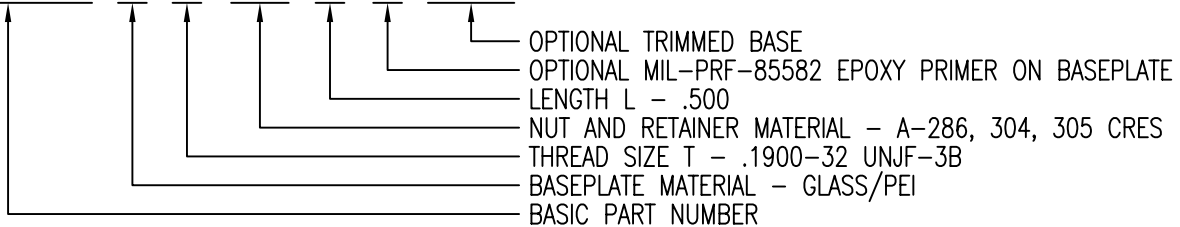
LENGTH DATA

CODE	6	8	12	16	24
L ±.030	.375	.500	.750	1.000	1.500
X ±.015	.750	.875	1.125	1.375	1.875
Y ±.015	1.000	1.125	1.375	1.625	2.125

STRENGTH REQUIREMENT: WILL WITHSTAND
 A 50 LB LOAD APPLIED IN ANY DIRECTION.

EXAMPLE PART NUMBER

CB4022 V 3 CR 8 P 750



OPTIONAL TRIMMED BASE
 OPTIONAL MIL-PRF-85582 EPOXY PRIMER ON BASEPLATE
 LENGTH L - .500
 NUT AND RETAINER MATERIAL - A-286, 304, 305 CRES
 THREAD SIZE T - .1900-32 UNJF-3B
 BASEPLATE MATERIAL - GLASS/PEI
 BASIC PART NUMBER

UNLESS OTHERWISE SPECIFIED, ALL DIMENSIONS ARE IN INCHES AND TOLERANCES ARE AS SHOWN BELOW. DIMENSIONAL TOLERANCES AND SYMBOLS PER ANSI Y14.5M-1982.

PROPRIETARY PARTS SHOWN IN THIS DRAWING ARE THE SUBJECT OF ISSUED UNITED STATES AND FOREIGN PATENTS AND PATENTS PENDING. UNAUTHORIZED REPRODUCTION AND/OR DISTRIBUTION OF THIS DRAWING IS SPECIFICALLY PROHIBITED.

GLICK BOND

CARSON CITY
 NEVADA 89706

CAD CB4022-2		APPROVALS	DATE
ANGLES	±1°	DRAWN DAC	16DEC04
.XX	±.03	CHECKED <i>[Signature]</i>	16DEC04
.XXX	±.010	RELEASED CGH	2JAN05
.XXXX	±.001	REVISED DAC	16DEC04

TITLE			
NUTPLATE, RIGHT ANGLE, COMPOSITE			
SIZE	CAGE CODE	DWG. NO.	REV.
A	66530	CB4022	14
SCALE	1/1 16DEC04		SHEET 2 OF 2