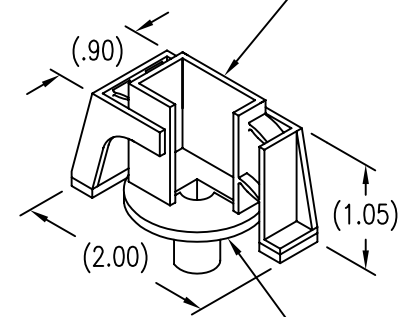


DISPOSABLE PRESSURE SENSITIVE ADHESIVE FIXTURE HOLDS BUSHING WHILE ADHESIVE CURES.



BUSHING ATTACHED BY ADHESIVE APPLIED TO THIS SURFACE.

MATERIAL AND FINISH DATA

CODE	MATERIAL	SPEC.	FINISH	SPEC.
A	7075-T6 ALUMINUM	AMS 4122, QQ-A-225/9	ANODIZE	MIL-A-8625
CR	302, 303, 304, OR A-286 CRES	AMS 5637, 5638, 5639, 5640, 5641 AMS 5726, 5731, 5732, 5734, 5737	PASSIVATE	AMS-QQ-P-35
CRA	A-286 CRES	AMS 5726, 5731, 5732, 5734, 5737	PASSIVATE	AMS-QQ-P-35
CRM	316 CRES	AMS 5648 OR 5653	PASSIVATE	AMS-QQ-P-35

THREAD, DIMENSION, AND STRENGTH DATA

CODE	THREAD T PER MIL-S-8879	A DIA	TENSILE (LBS MIN)	
			ALUMINUM	STEEL
08	.1640-32 UNJC-3B	.312	860	860
3	.1900-32 UNJF-3B	.312	1230	1230
4	.2500-28 UNJF-3B	.500	1140	2290
5	.3125-24 UNJF-3B	.500	1830	3700
6	.3750-24 UNJF-3B	.500	2840	5720

THREAD AND DIMENSION DATA

CODE	THREAD T PER ANSI B1.1	A DIA
324	.1900-24 UNC-3B	.312
420	.2500-20 UNC-3B	.500
518	.3125-18 UNC-3B	.500
616	.3750-16 UNC-3B	.500

GRIP LENGTH L DATA (GRIP LENGTH L IN SIXTEENTHS OF AN INCH)

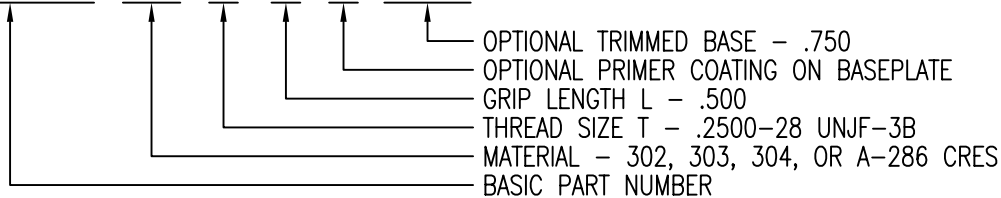
CODE	4	6	8	10	12	14	16	18	20	22	24
L	.250	.375	.500	.625	.750	.875	1.000	1.125	1.250	1.375	1.500

OPTIONAL PRIMER

CODE	BASEPLATE PRIMER	SPEC.
P	EPOXY PRIMER	MIL-PRF-85582

EXAMPLE PART NUMBER

CB3005 CR 4-8 P 750



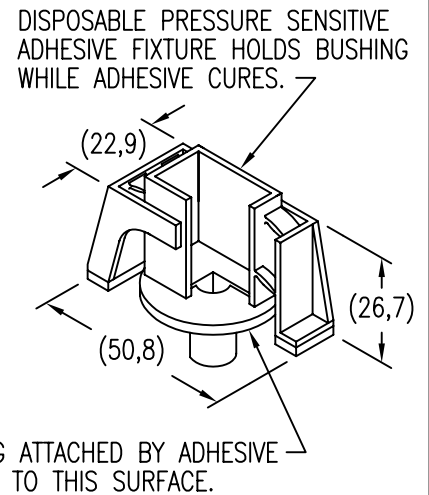
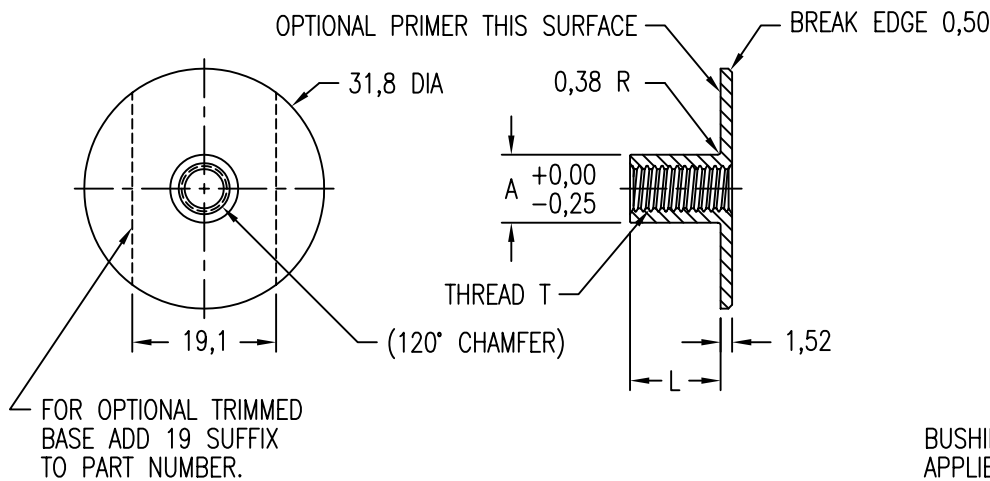
UNLESS OTHERWISE SPECIFIED, ALL DIMENSIONS ARE IN INCHES AND TOLERANCES ARE AS SHOWN BELOW. DIMENSIONAL TOLERANCES AND SYMBOLS PER ANSI Y14.5M-1982.

PROPRIETARY PARTS SHOWN IN THIS DRAWING ARE THE SUBJECT OF ISSUED UNITED STATES AND FOREIGN PATENTS AND PATENTS PENDING. UNAUTHORIZED REPRODUCTION AND/OR DISTRIBUTION OF THIS DRAWING IS SPECIFICALLY PROHIBITED.

**GLICK BOND**

CARSON CITY  
NEVADA 89706

CAD CB3005-1		APPROVALS	DATE	TITLE			
ANGLES	±1°	DRAWN	BPEREZ	BUSHING, THREADED, ADHESIVE BONDED			
.XX	±.03	CHECKED	DOC	SIZE	CAGE CODE	DWG. NO.	REV.
.XXX	±.010	RELEASED	CGH	A	66530	CB3005	9
.XXXX	±.001	REVISED	BPEREZ	SCALE	1/1	3AUG04	SHEET 1 OF 2



MATERIAL AND FINISH DATA

CODE	MATERIAL	SPEC.	FINISH	SPEC.
A	7075-T6 ALUMINUM	AMS 4122, QQ-A-225/9	ANODIZE	MIL-A-8625
CR	302, 303, 304, OR A-286 CRES	AMS 5637, 5638, 5639, 5640, 5641 AMS 5726, 5731, 5732, 5734, 5737	PASSIVATE	AMS-QQ-P-35
CRA	A-286 CRES	AMS 5726, 5731, 5732, 5734, 5737	PASSIVATE	AMS-QQ-P-35
CRM	316 CRES	AMS 5648 OR 5653	PASSIVATE	AMS-QQ-P-35

THREAD, DIMENSION, AND STRENGTH DATA

CODE	THREAD T PER ISO5855	A DIA	TENSILE (kN MIN)	
			ALUMINUM	STEEL
5M	MJ5 X 0,8 4H6H	8,00	5,5	5,5
6M	MJ6 X 1,0 4H5H	9,00	4,5	9,0
8M	MJ8 X 1,0 4H5H	13,00	8,1	16,5

GRIP LENGTH L DATA (GRIP LENGTH L IN MILLIMETERS)

CODE	10M	12M	15M	20M	25M
L	10	12	15	20	25

OPTIONAL PRIMER

CODE	BASEPLATE PRIMER	SPEC.
P	EPOXY PRIMER	MIL-PRF-85582

EXAMPLE PART NUMBER

CB3005 CR 6M 12M P 19

OPTIONAL TRIMMED BASE - 19,1 MM  
 OPTIONAL PRIMER COATING ON BASEPLATE  
 GRIP LENGTH L - 12 MM  
 THREAD SIZE T - MJ6 X 1,0 4H5H  
 MATERIAL - 302, 303, 304, OR A-286 CRES  
 BASIC PART NUMBER

UNLESS OTHERWISE SPECIFIED, ALL DIMENSIONS ARE IN MILLIMETERS AND TOLERANCES ARE AS SHOWN BELOW. DIMENSIONAL TOLERANCES AND SYMBOLS PER ANSI Y14.5M-1982.

PROPRIETARY PARTS SHOWN IN THIS DRAWING ARE THE SUBJECT OF ISSUED UNITED STATES AND FOREIGN PATENTS AND PATENTS PENDING. UNAUTHORIZED REPRODUCTION AND/OR DISTRIBUTION OF THIS DRAWING IS SPECIFICALLY PROHIBITED.

**GLICK BOND**

CARSON CITY  
NEVADA 89706

CAD CB3005-2 METRIC DIMENSIONS	
ANGLES	±1°
.X	±0,8
.XX	±0,25

APPROVALS	DATE
DRAWN <b>BPEREZ</b>	3AUG04
CHECKED <b>DDC</b>	3AUG04
RELEASED <b>CGH</b>	3AUG04
REVISED <b>BPEREZ</b>	3AUG04

TITLE BUSHING, THREADED, ADHESIVE BONDED			
SIZE	CAGE CODE	DWG. NO.	REV.
A	66530	CB3005 (METRIC)	9
SCALE	1/1		SHEET 2 OF 2